

**IN THE UNITED STATES DISTRICT COURT  
FOR THE SOUTHERN DISTRICT OF TEXAS  
LAREDO DIVISION**

**ARABILITY IP LLC**

Plaintiff,

v.

**SONY ELECTRONICS, INC.,**

Defendant.

C.A. No. 5:22-cv-74

**JURY TRIAL DEMANDED**

**PATENT CASE**

**ORIGINAL COMPLAINT FOR PATENT INFRINGEMENT**

Plaintiff Arability IP LLC. files this Original Complaint for Patent Infringement against Sony Electronics, Inc. and would respectfully show the Court as follows:

**I. THE PARTIES**

1. Plaintiff Arability IP LLC (“Arability” or “Plaintiff”) is a Texas limited liability company having an address at 6009 W Parker Rd, Ste 149 - 1023, Plano, TX 75093.

2. On information and belief, Defendant Sony Electronics, Inc. (“Defendant”) has a place of business at 11302 EastPoint Dr C, Laredo, TX 78045, 11302 EastPoint Dr, Laredo, TX 78045. Defendant has a registered agent at Corporation Service Company DBA CSC – Lawyers Incorporating Service Company at 211 E. 7<sup>th</sup> Street, Suite 620, Austin, TX 78701.

**II. JURISDICTION AND VENUE**

3. This action arises under the patent laws of the United States, Title 35 of the United States Code. This Court has subject matter jurisdiction of such action under 28 U.S.C. §§ 1331 and 1338(a).

4. On information and belief, Defendant is subject to this Court’s specific and general personal jurisdiction, pursuant to due process and the Texas Long-Arm Statute, due at least to its

business in this forum, including at least a portion of the infringements alleged herein, at EastPoint Dr C, Laredo, TX 78045, 11302 EastPoint Dr, Laredo, TX 78045.

5. Without limitation, on information and belief, within this state, Defendant has used the patented inventions thereby committing, and continuing to commit, acts of patent infringement alleged herein. In addition, on information and belief, Defendant has derived revenues from its infringing acts occurring within Texas. Further, on information and belief, Defendant is subject to the Court's general jurisdiction, including from regularly doing or soliciting business, engaging in other persistent courses of conduct, and deriving substantial revenue from goods and services provided to persons or entities in Texas. Further, on information and belief, Defendant is subject to the Court's personal jurisdiction at least due to its sale of products and/or services within Texas. Defendant has committed such purposeful acts and/or transactions in Texas such that it reasonably should know and expect that it could be haled into this Court as a consequence of such activity.

6. Venue is proper in this district under 28 U.S.C. § 1400(b). On information and belief, Defendant has businesses in this district at EastPoint Dr C, Laredo, TX 78045, 11302 EastPoint Dr, Laredo, TX 78045. On information and belief, from and within this District Defendant has committed at least a portion of the infringements at issue in this case.

7. For these reasons, personal jurisdiction exists, and venue is proper in this Court under 28 U.S.C. § 1400(b).

**III. COUNT I**  
**(PATENT INFRINGEMENT OF UNITED STATES PATENT NO. 11,262,908)**

8. Plaintiff incorporates the above paragraphs herein by reference.

9. On March 1, 2022, United States Patent No. 11,262,908 ("the '908 Patent") was duly and legally issued by the United States Patent and Trademark Office. The '908 Patent is titled

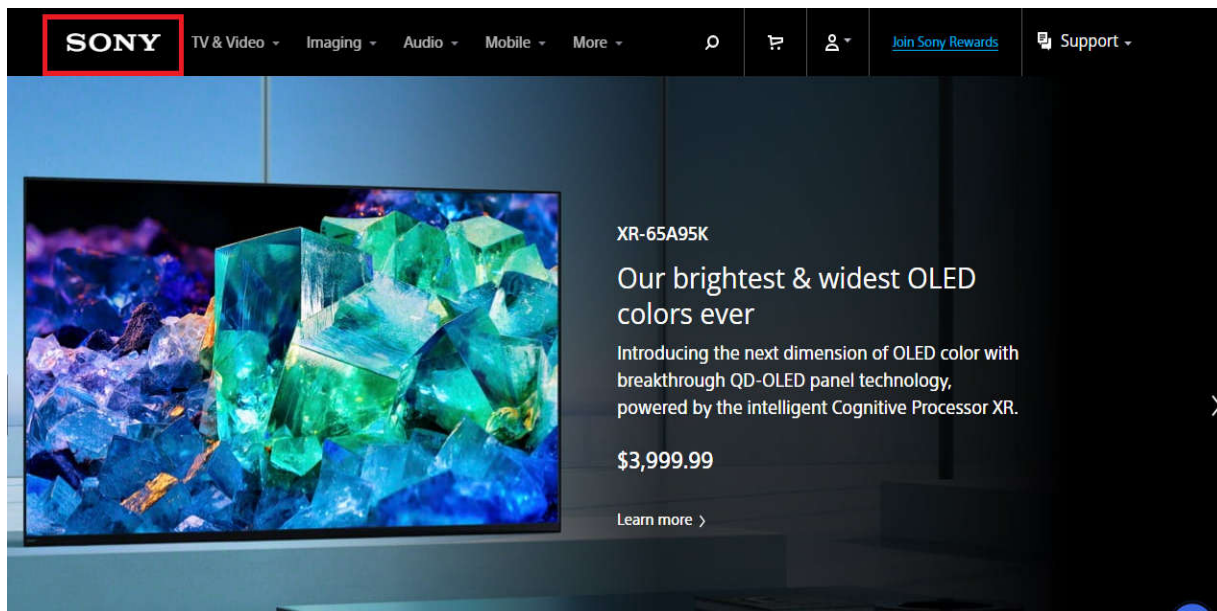
“Method of Adjusting an UI and User Terminal Using the Same.” A true and correct copy of the ‘908 Patent is attached hereto as Exhibit A and incorporated herein by reference.

10. Arability is the assignee of all right, title, and interest in the ‘908 patent, including all rights to enforce and prosecute actions for infringement and to collect damages for all relevant times against infringers of the ‘908 Patent. Accordingly, Arability possesses the exclusive right and standing to prosecute the present action for infringement of the ‘908 Patent by Defendant.

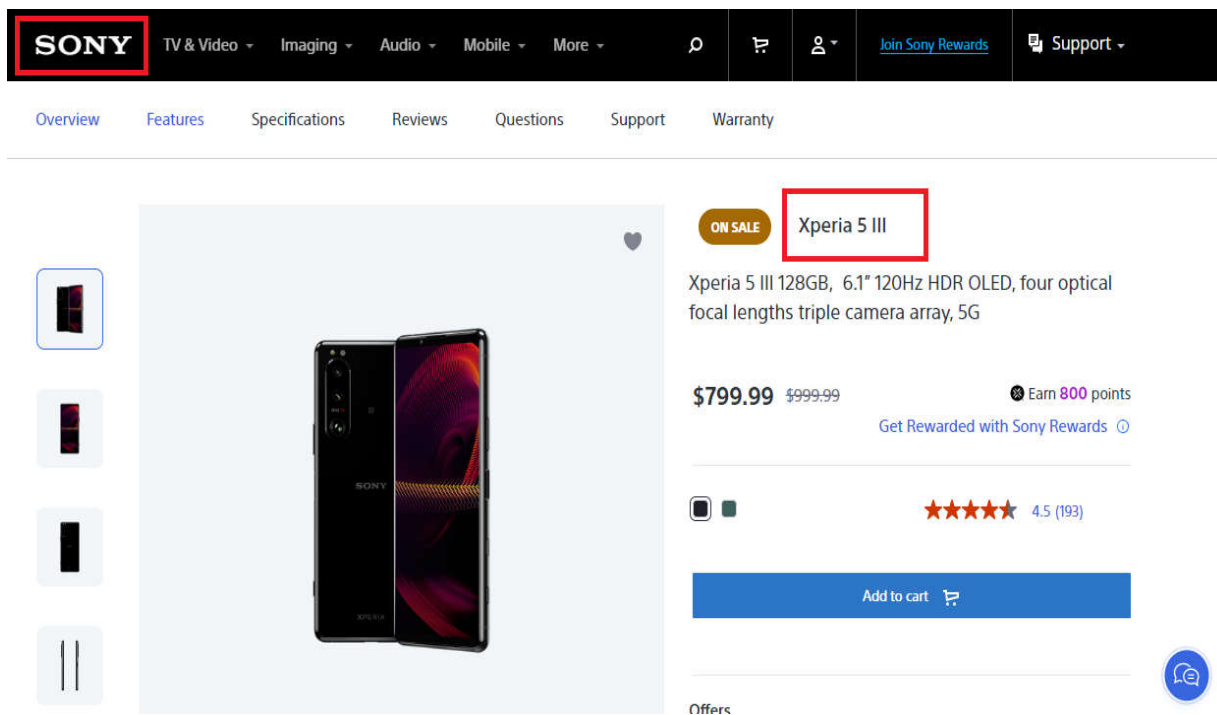
11. The invention in the ‘908 Patent relates to the field of user interfaces (“UI”) and adjusting the UI for a user terminal. (Ex. A at 1:25-26).

12. The invention solves the problem of UIs failing to provide a sufficient interface to allow one handed use. (*Id.* at 1:30-37). In recent times the display size of smart phones has increased making it easier to view video clips and other visual displays. (*Id.* at 1:30-30-32). However, as the size of the smartphones get larger, it becomes more difficult to manipulate the smartphone with one hand. (*Id.* at 1:32-33). When manipulating a smart phone with one hand, the thumb is used in most cases, but since the thumb is shorter compared to the other fingers, manipulation of the smartphone display becomes more difficult as the display size increases. (*Id.* at 1:33-37). The inventors therefore created a new method for adjusting a user interface to allow the screen to be more easily manipulated using one hand and with a thumb. (*Id.* at 1:65-2:3).

13. **Direct Infringement.** Upon information and belief, Defendant has been directly infringing claims 1-2, 4-5, and 9-10 of the ‘908 Patent in Texas, and elsewhere in the United States, by performing the claimed method for adjusting a user interface on a user terminal using the Sony Xperia 5 III (“Accused Instrumentality”):



(E.g., <https://electronics.sony.com/>).



(E.g., <https://electronics.sony.com/mobile/smartphone/all/p/xqbq62-b>).

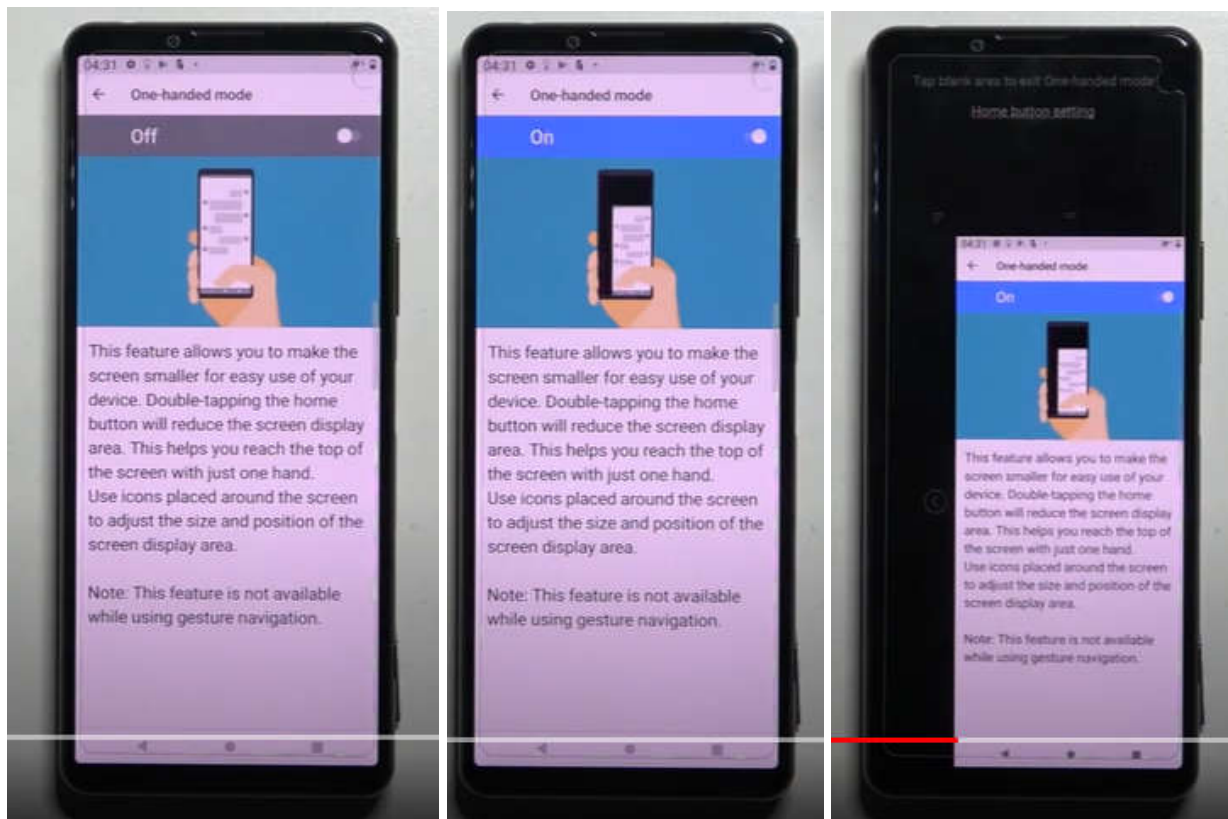
## One-handed mode

Enable One-handed mode to adjust the display size so you can type with one hand more easily.

- 1 Find and tap [Settings] > [Display] > [Advanced] > [One-handed mode].
- 2 Tap the [One-handed mode] switch to enable or disable the function.
- 3 To shrink the screen, double-tap ● (Home button).

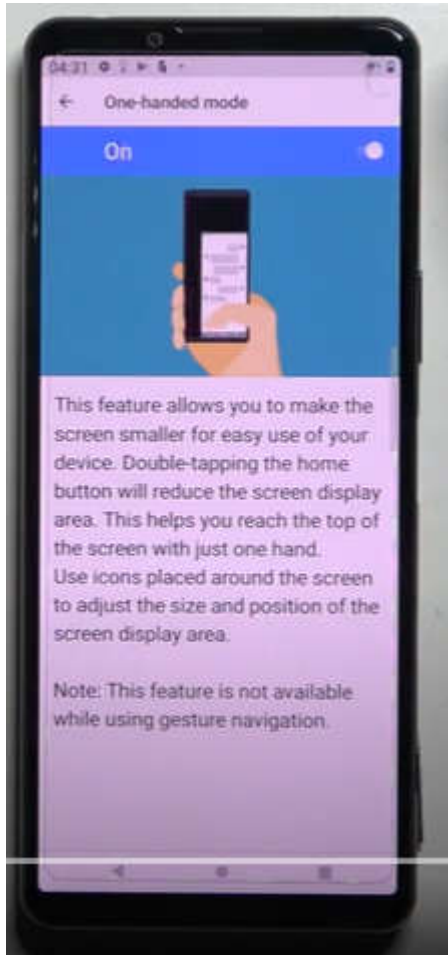
To exit One-handed mode, double-tap ● (Home button) again or tap an empty area on the screen.

(E.g., <https://helpguide.sony.net/mobile/xperia-5m3/v1/en/contents/TP1000485660.html>).



(E.g., <https://www.youtube.com/watch?v=uDKwnTMm124>).

14. As shown below, the Accused Instrumentality performs the step of displaying a UI on a display unit of a user terminal (e.g., display screen of the Accused Instrumentality), wherein the display unit includes a screen that defines a screen size.



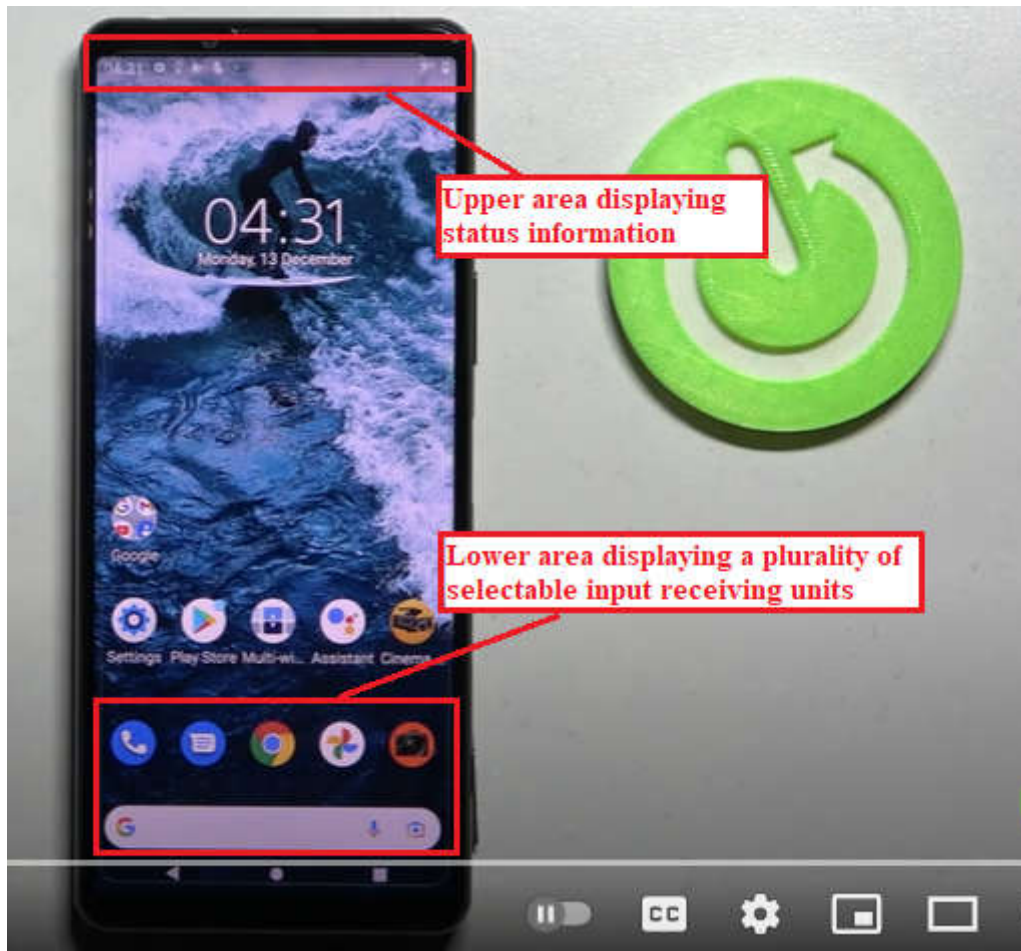
(E.g., <https://www.youtube.com/watch?v=uDKwnTMm124>).

## Specifications

Display	
Display Resolution	FHD+ HDR OLED (2520 x 1080)
DISPLAY SIZE	6.1" 21:9 display
features	120Hz Refresh rate, 240Hz Motion blur reduction, 240Hz Touch scanning rate, Creator mode "powered by CineAlta"—Inspired by Master Monitor color reproduction, DCI-P3 100%, ITU-R BT.2020 (REC.2020), Illuminant D65 White point, 10 bit tonal gradation, X1™ for mobile

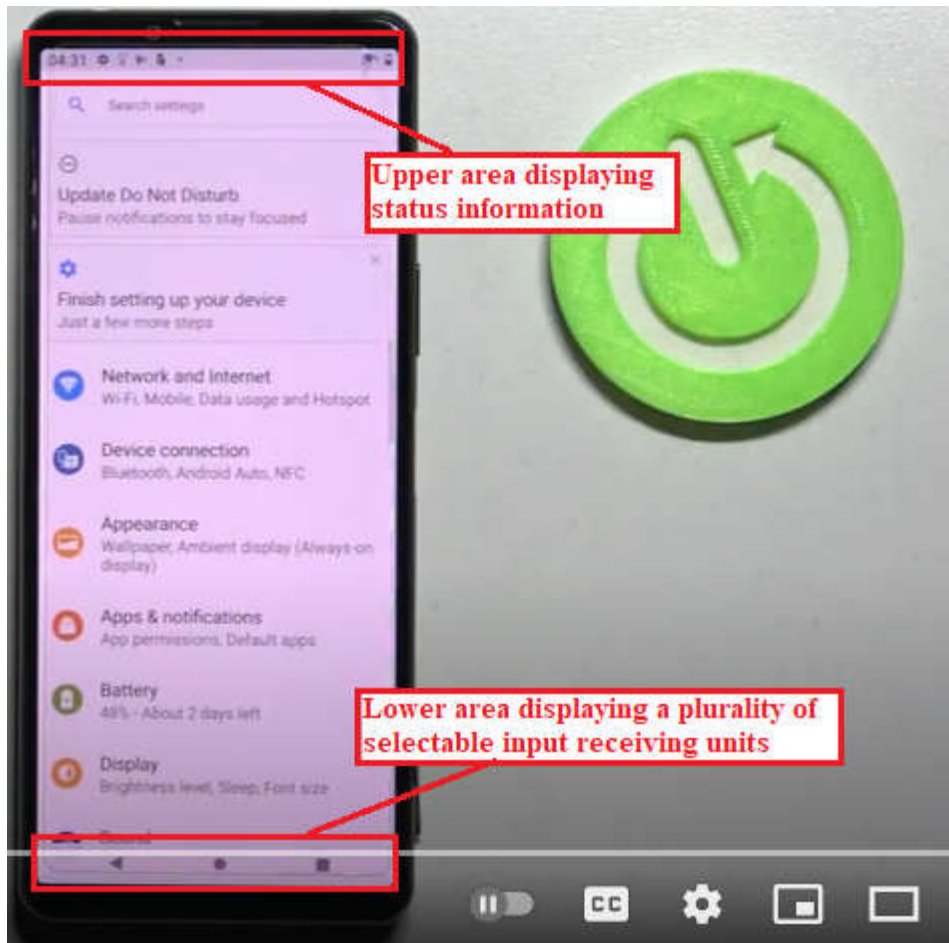
(E.g., <https://electronics.sony.com/mobile/smartphone/all/p/xqbq62-b>).

15. As shown below, the Accused Instrumentality performs the step of displaying a UI, wherein the UI includes an upper area displaying status information (e.g., battery, signal strength, etc.) pertaining to the user terminal, wherein the status information includes an indication of battery charge, and a lower area displaying a plurality of selectable input receiving units (e.g., input receiving interfaces); wherein the plurality of selectable input receiving units comprises one or more software applications (e.g., applications like phone, camera, etc.) represented by graphical icons (e.g., icons of applications); wherein a size of the upper area and lower area in relation to the UI defines a ratio. As shown, the upper area and lower area changes in proportion, during one-hand mode, defining a ratio.

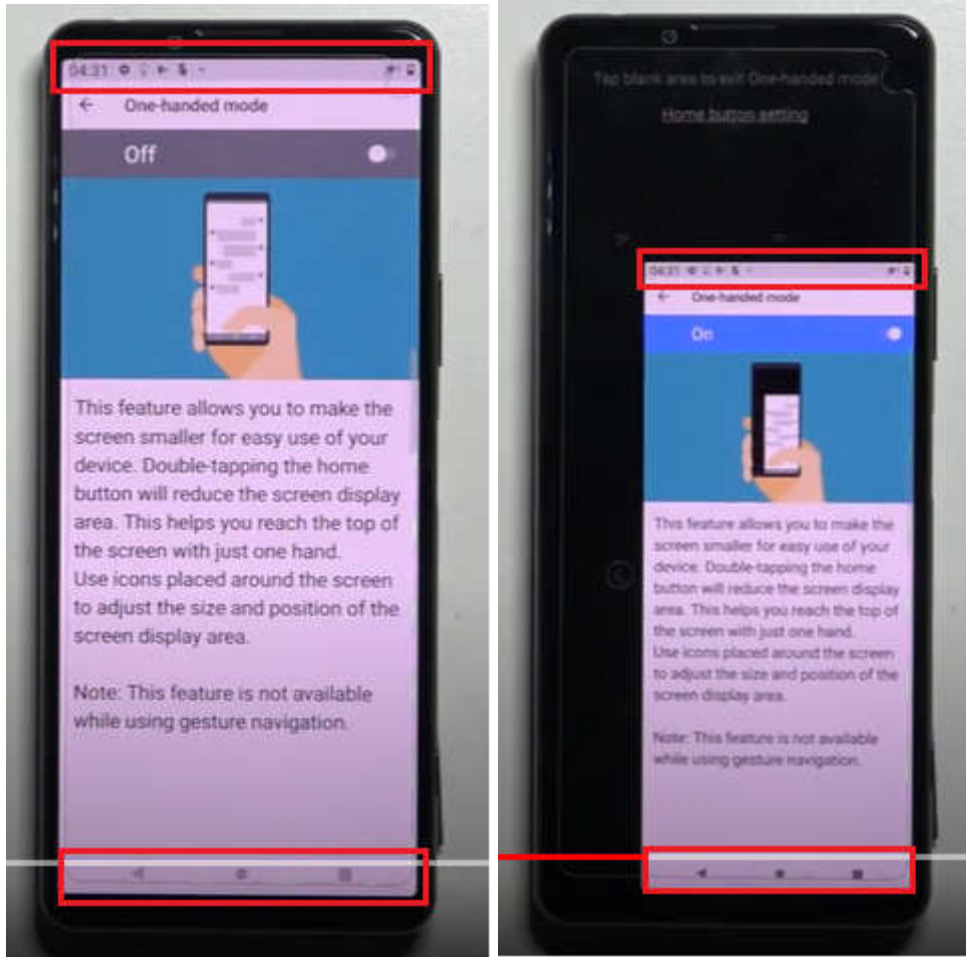


(E.g., <https://www.youtube.com/watch?v=uDKwnTMm124>).



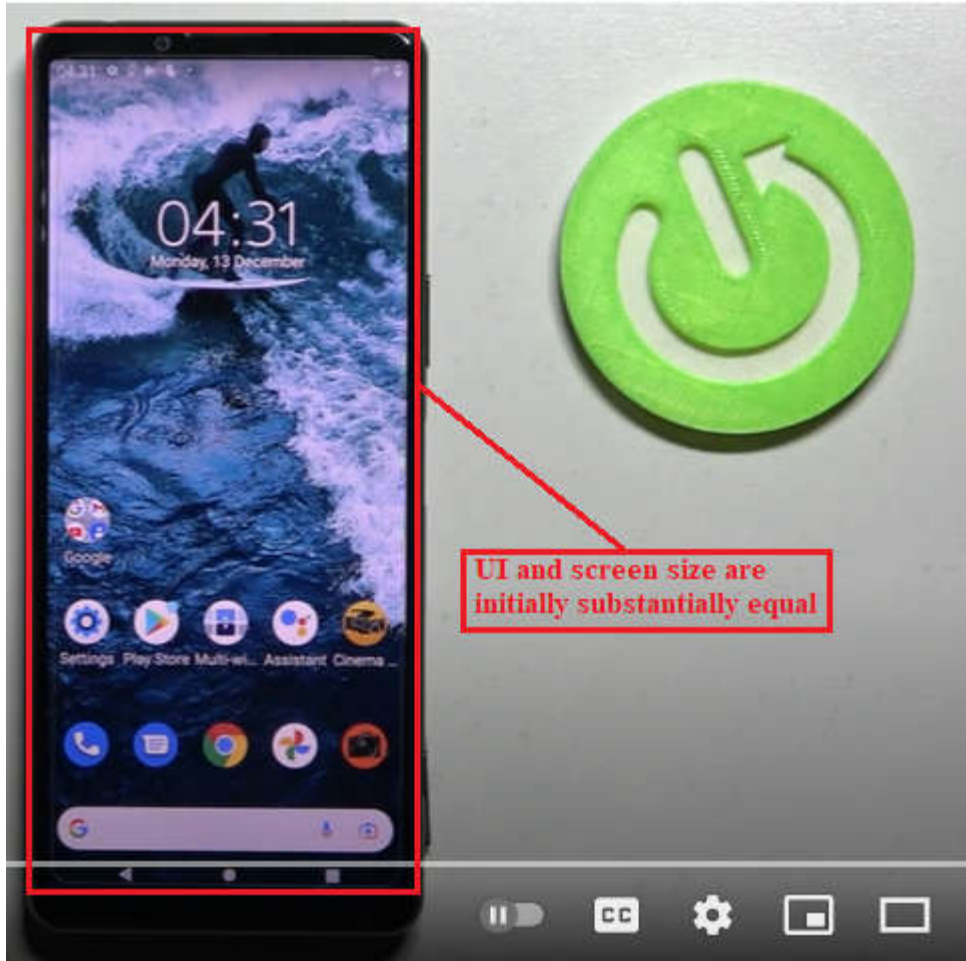


(E.g., <https://www.youtube.com/watch?v=uDKwnTMm124>).

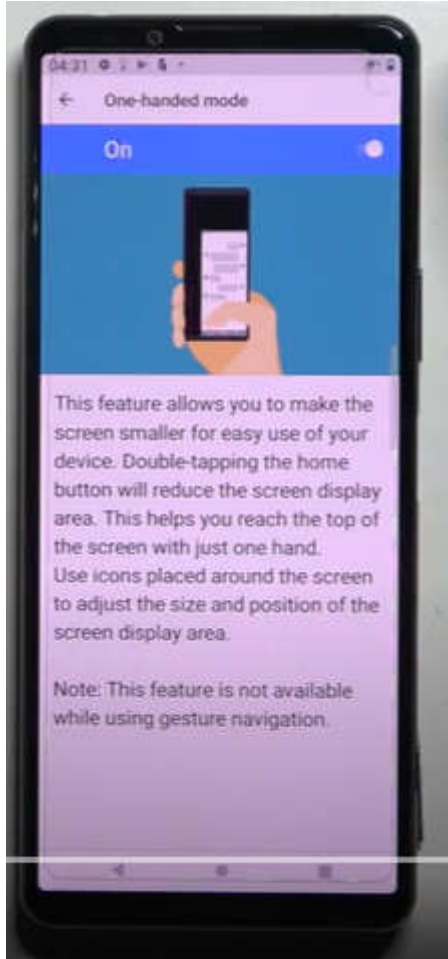


(E.g., <https://www.youtube.com/watch?v=uDKwnTMm124>).

16. As shown below, the Accused Instrumentality performs the step of displaying a UI, wherein the UI and the screen size are initially substantially equal in size, thereby defining an initial UI size.



(E.g., <https://www.youtube.com/watch?v=uDKwnTMm124>).



(E.g., <https://www.youtube.com/watch?v=uDKwnTMm124>).

17. As shown below, the Accused Instrumentality performs the step of receiving a first touch event (e.g., swipe up diagonally from bottom corner of the screen).

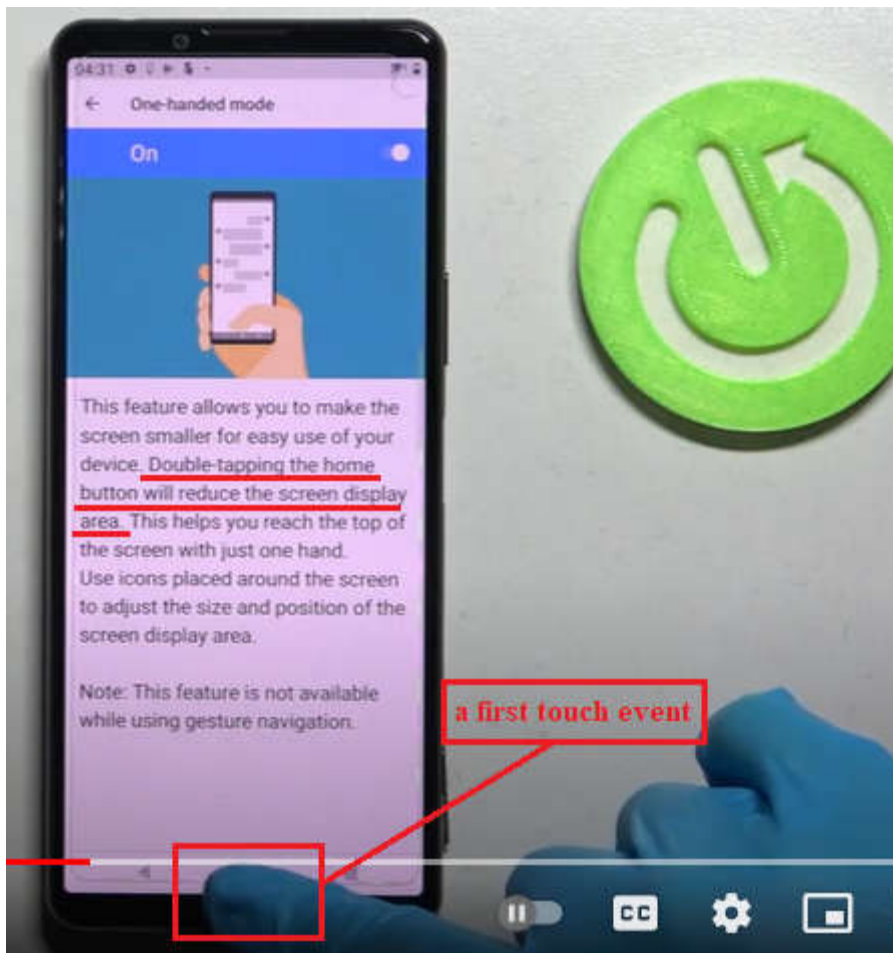
## One-handed mode

Enable One-handed mode to adjust the display size so you can type with one hand more easily.

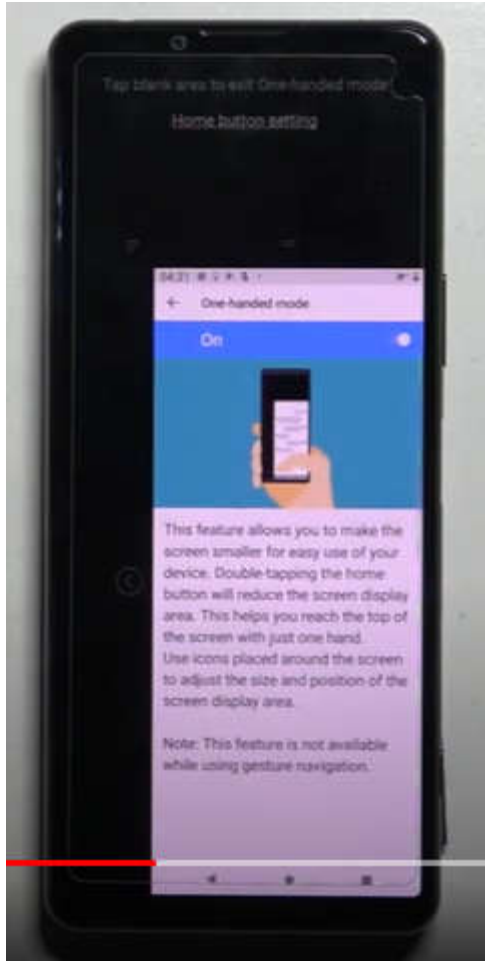
- 1 Find and tap [Settings] > [Display] > [Advanced] > [One-handed mode].
- 2 Tap the [One-handed mode] switch to enable or disable the function.
- 3 To shrink the screen, double-tap ● (Home button).

To exit One-handed mode, double-tap ● (Home button) again or tap an empty area on the screen.

(E.g., <https://helpguide.sony.net/mobile/xperia-5m3/v1/en/contents/TP1000485660.html>).

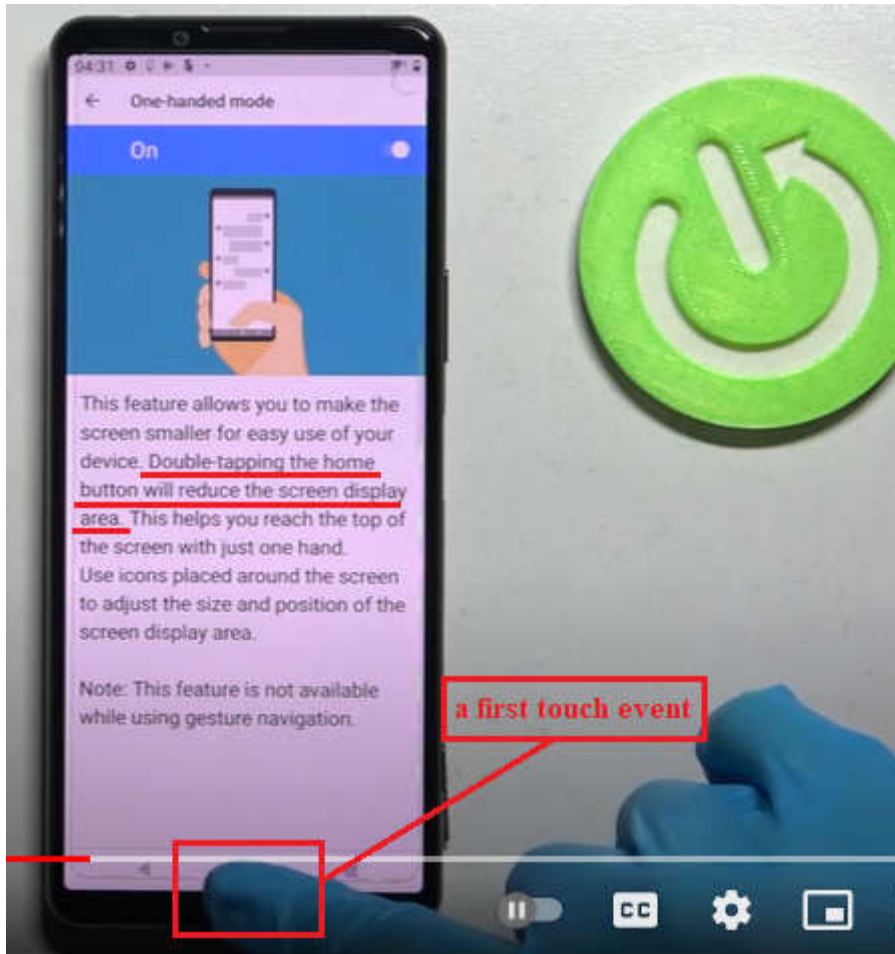


(E.g., <https://www.youtube.com/watch?v=uDKwnTMm124>).



(E.g., <https://www.youtube.com/watch?v=uDKwnTMm124>).

18. As shown below, the Accused Instrumentality performs the step of resizing the UI into a reduced form to define a reduced UI according to the first touch event (e.g., swipe up diagonally from bottom corner of the screen), wherein the reduced UI is smaller than the screen size and wherein a difference in area between the reduced UI and the screen size defines a space.



(E.g., <https://www.youtube.com/watch?v=uDKwnTMm124>).



(E.g., <https://www.youtube.com/watch?v=uDKwnTMm124>).

19. As shown below, the Accused Instrumentality performs the step of displaying the reduced UI wherein the reduced UI defines a smaller upper area and a smaller lower area, wherein a size of the smaller upper area and smaller lower area in relation to the reduced UI substantially maintains the ratio. As shown below, the upper area and lower area changes in proportion, during one-hand mode, defining a ratio.





(E.g., <https://www.youtube.com/watch?v=uDKwnTMm124>).

20. As shown below, the Accused Instrumentality performs the step of defining the space wherein the space excludes the smaller upper area and smaller lower area.



(E.g., <https://www.youtube.com/watch?v=uDKwnTMm124>).



(E.g., <https://www.youtube.com/watch?v=uDKwnTMm124>).

21. As shown below, the Accused Instrumentality performs the step of executing an application (e.g., phone, camera, settings, etc.) within the reduced UI when the application is requested to be executed by a user while the reduced UI is being displayed. As shown below, the Accused Instrumentality practices executing the settings application within the reduced UI.

## One-handed mode

Enable One-handed mode to adjust the display size so you can type with one hand more easily.

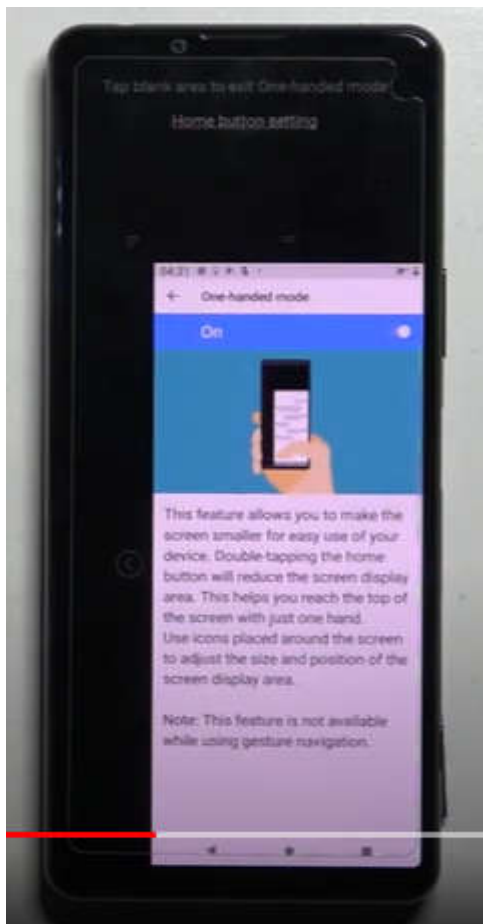
**1 Find and tap [Settings] > [Display] > [Advanced] > [One-handed mode].**

**2 Tap the [One-handed mode] switch to enable or disable the function.**

**3 To shrink the screen, double-tap ● (Home button).**

To exit One-handed mode, double-tap ● (Home button) again or tap an empty area on the screen.

(E.g., <https://helpguide.sony.net/mobile/xperia-5m3/v1/en/contents/TP1000485660.html>).



(E.g., <https://www.youtube.com/watch?v=uDKwnTMm124>).

22. As shown below, the Accused Instrumentality performs the step of receiving a second touch event (e.g., a second touch event to enlarge the display).

### One-handed mode

---

Enable One-handed mode to adjust the display size so you can type with one hand more easily.


**1 Find and tap [Settings] > [Display] > [Advanced] > [One-handed mode].**

**2 Tap the [One-handed mode] switch to enable or disable the function.**

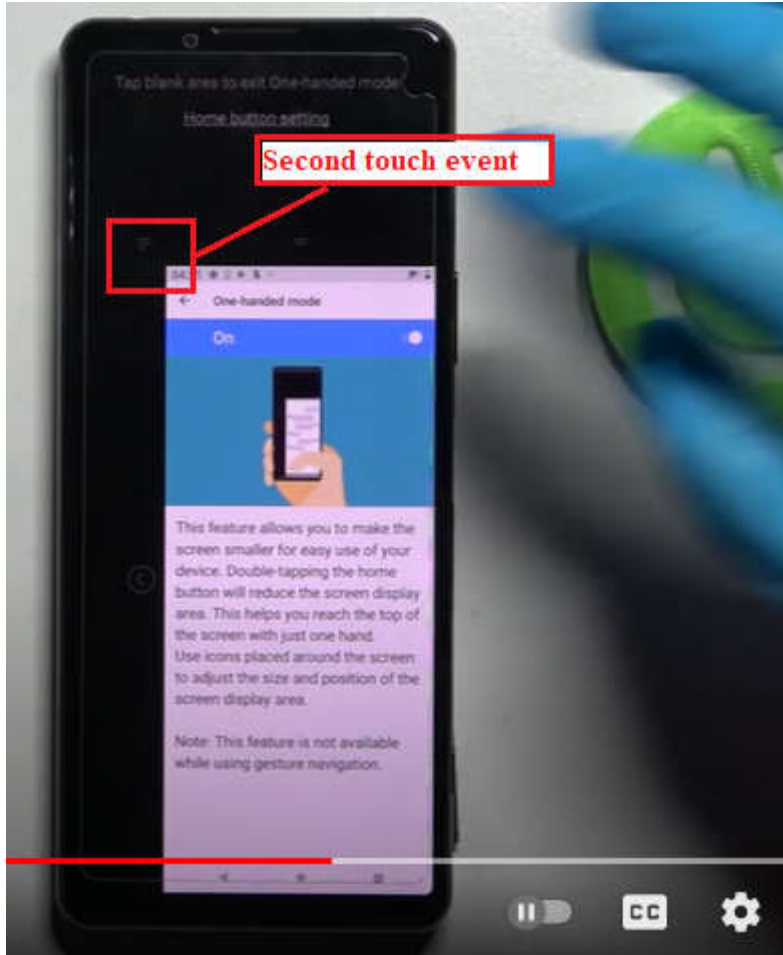
**3 To shrink the screen, double-tap ● (Home button).**

To exit One-handed mode, double-tap ● (Home button) again or tap an empty area on the screen.

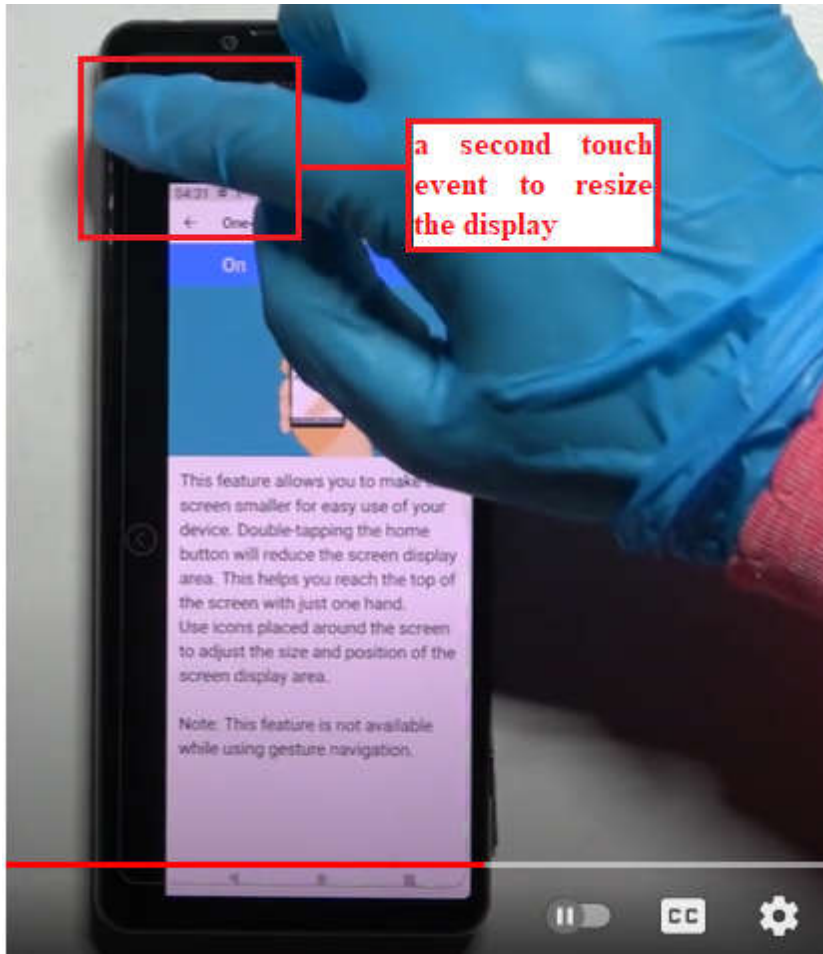
#### To adjust the position of the screen

- **To move the screen to the left side or to the right side:** tap ◀ (Left arrow icon) or ▶ (Right arrow icon) accordingly.
- **To move the screen upwards or downwards:** drag the horizontal stripes at the edge of the resized screen.
- **To resize the screen:** drag  (Resize screen icon) at the edge of the resized screen.

(E.g., <https://helpguide.sony.net/mobile/xperia-5m3/v1/en/contents/TP1000485660.html>).



(E.g., <https://www.youtube.com/watch?v=uDKwnTMm124>).



(E.g., <https://www.youtube.com/watch?v=uDKwnTMm124>).

23. As shown below, the Accused Instrumentality performs the step of resizing the reduced UI into an enlarged UI according to the second touch event (e.g., a second touch event to enlarge the display), wherein the enlarged UI is larger than the reduced UI; wherein the enlarged UI defines an enlarged upper area and enlarged lower area.

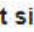


## One-handed mode

---

Enable One-handed mode to adjust the display size so you can type with one hand more easily.

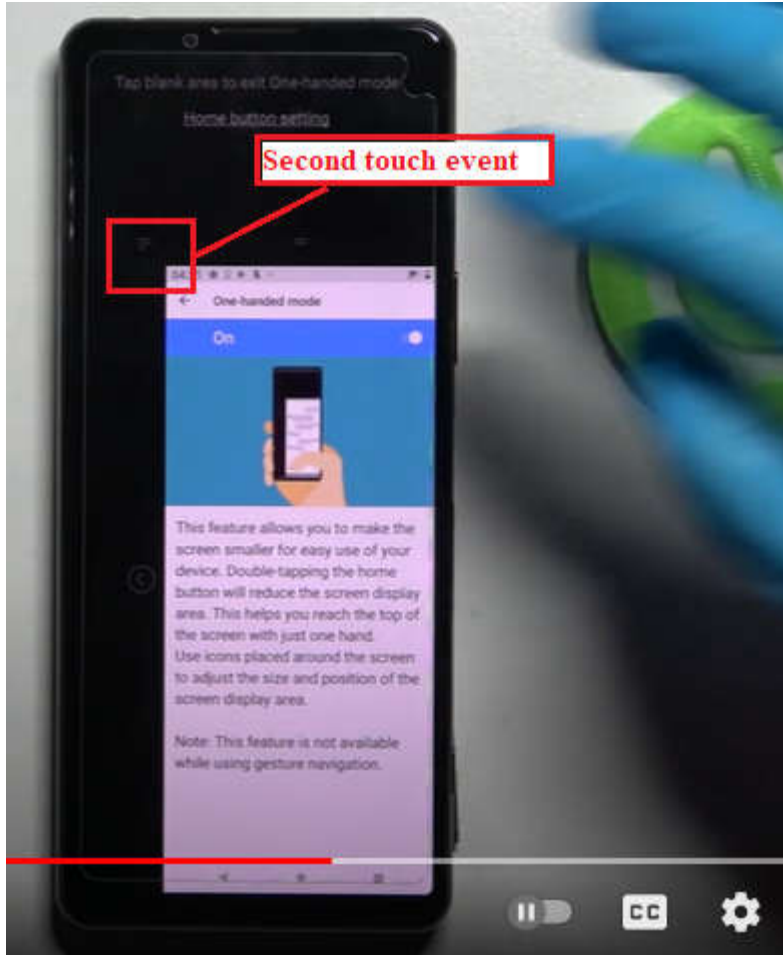
- 1 Find and tap **[Settings] > [Display] > [Advanced] > [One-handed mode]**.
- 2 Tap the **[One-handed mode]** switch to enable or disable the function.
- 3 To shrink the screen, double-tap  (Home button).  
To exit One-handed mode, double-tap  (Home button) again or tap an empty area on the screen.

### To adjust the position of the screen

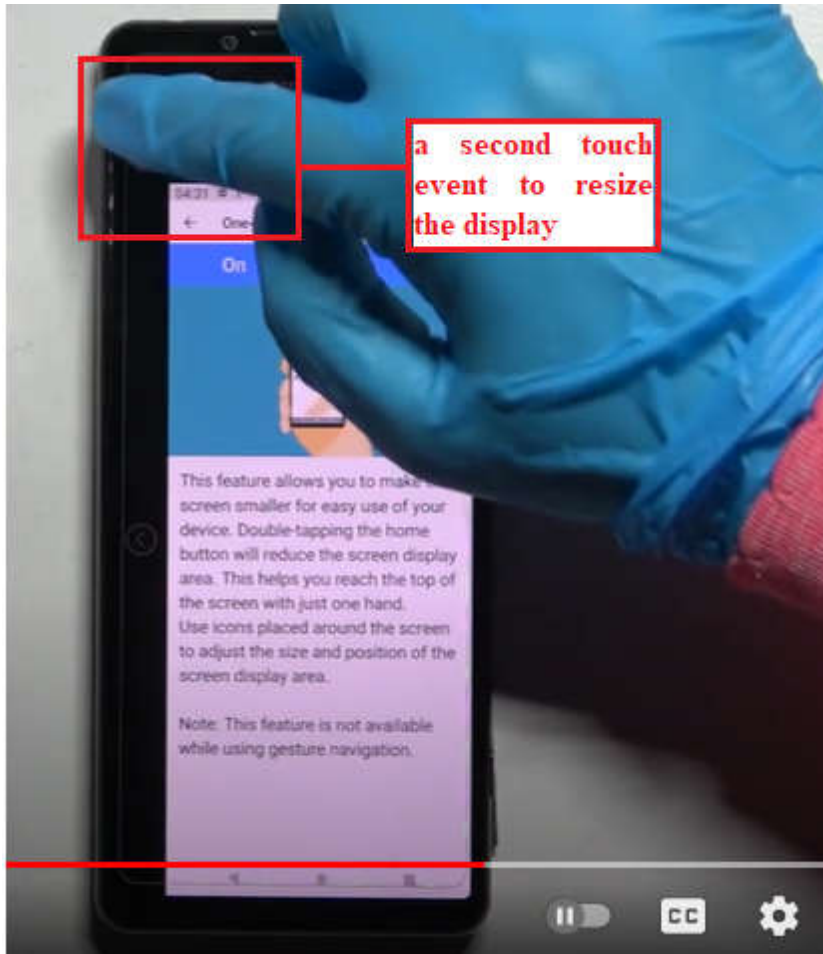
- To move the screen to the left side or to the right side: tap  (Left arrow icon) or  (Right arrow icon) accordingly.
- To move the screen upwards or downwards: drag the horizontal stripes at the edge of the resized screen.
- To resize the screen: drag  (Resize screen icon) at the edge of the resized screen.

(E.g., <https://helpguide.sony.net/mobile/xperia-5m3/v1/en/contents/TP1000485660.html>).

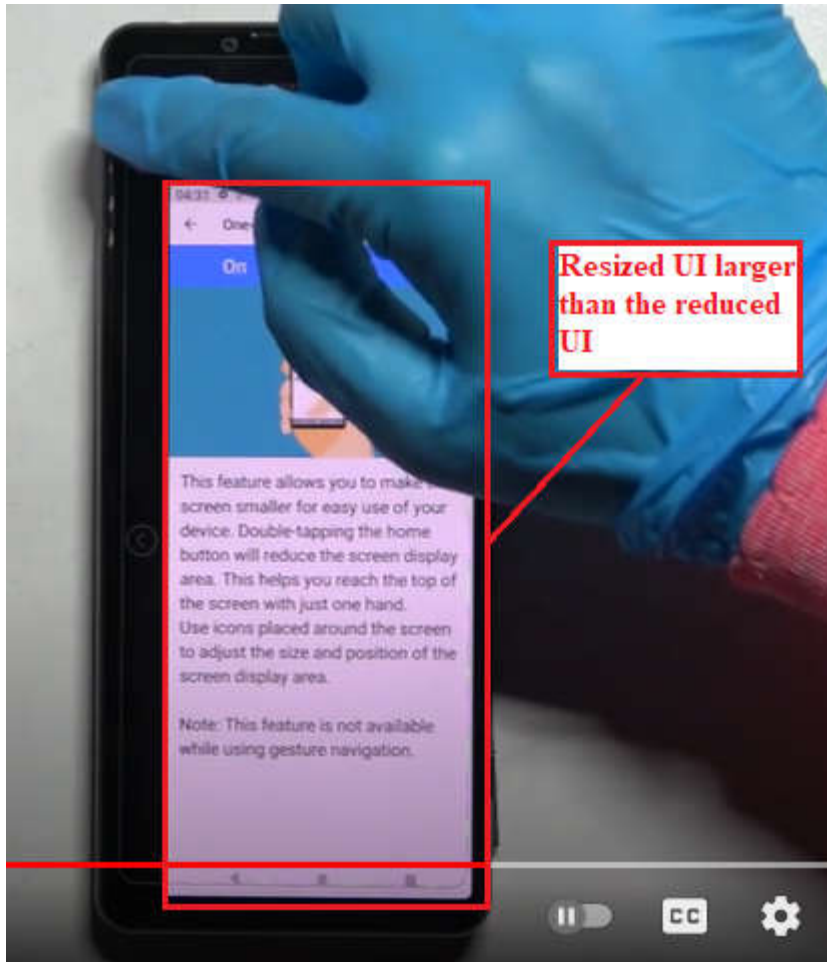




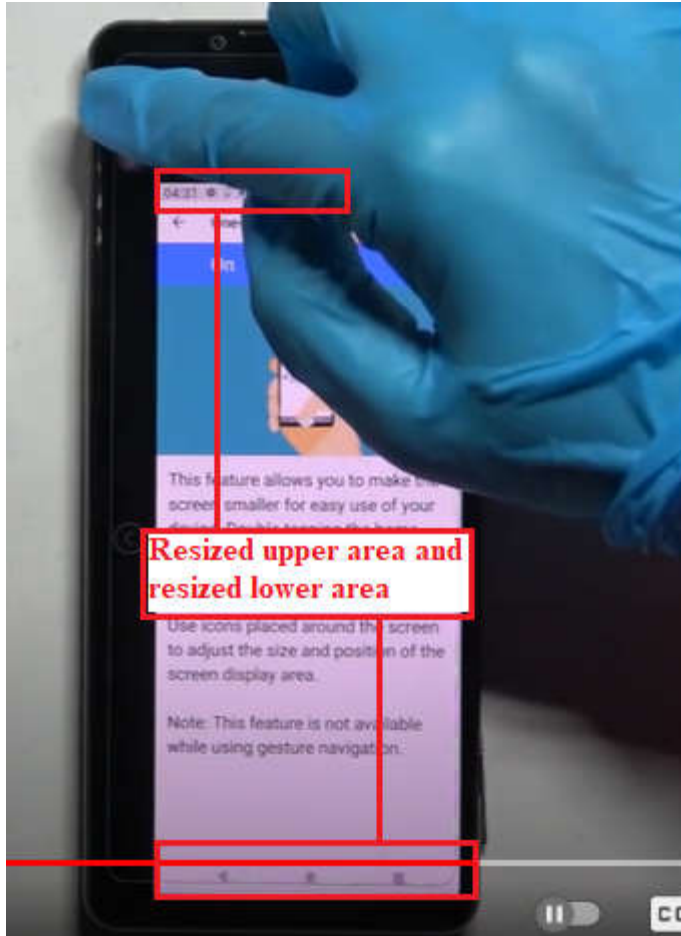
(E.g., <https://www.youtube.com/watch?v=uDKwnTMm124>).



(E.g., <https://www.youtube.com/watch?v=uDKwnTMm124>).

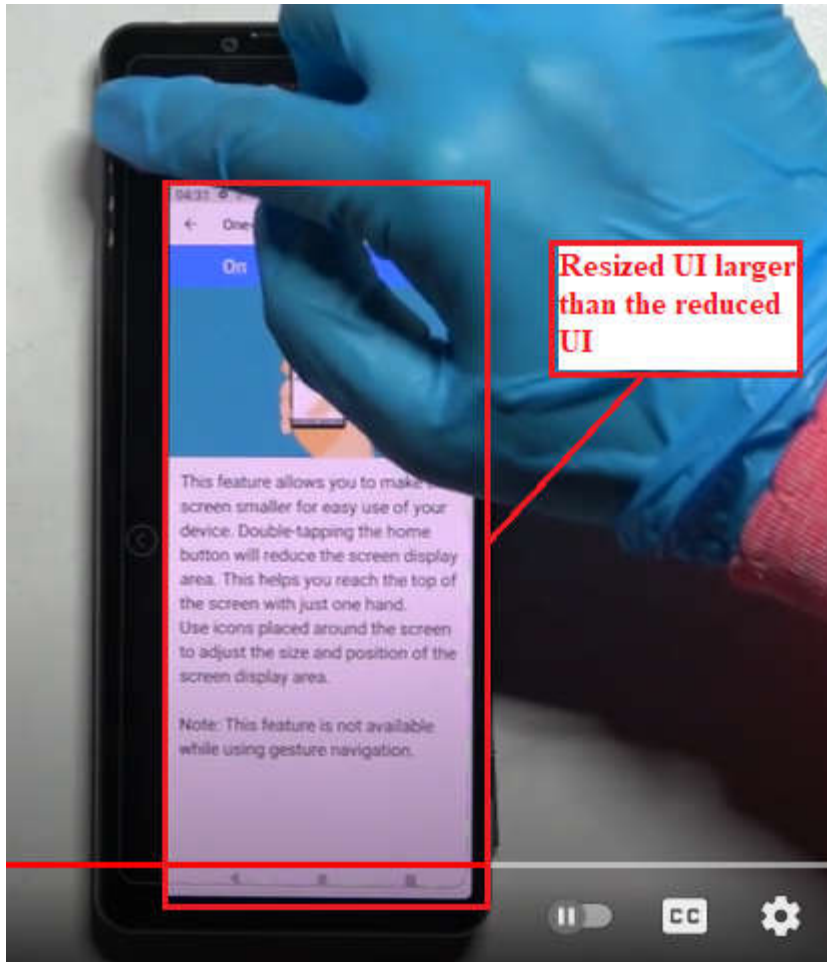


(E.g., <https://www.youtube.com/watch?v=uDKwnTMm124>).

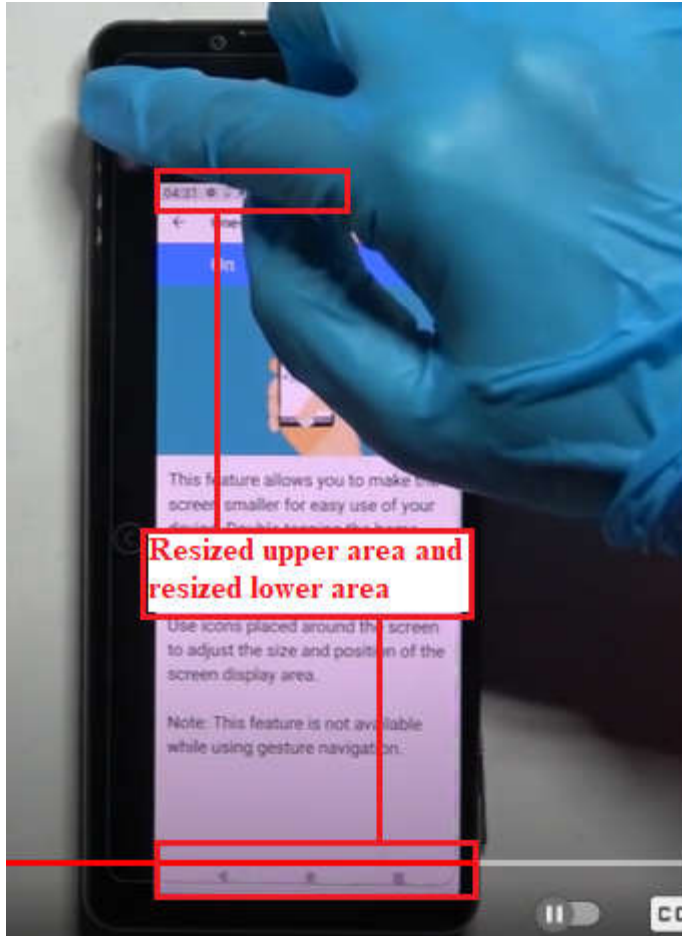


(E.g., <https://www.youtube.com/watch?v=uDKwnTMm124>).

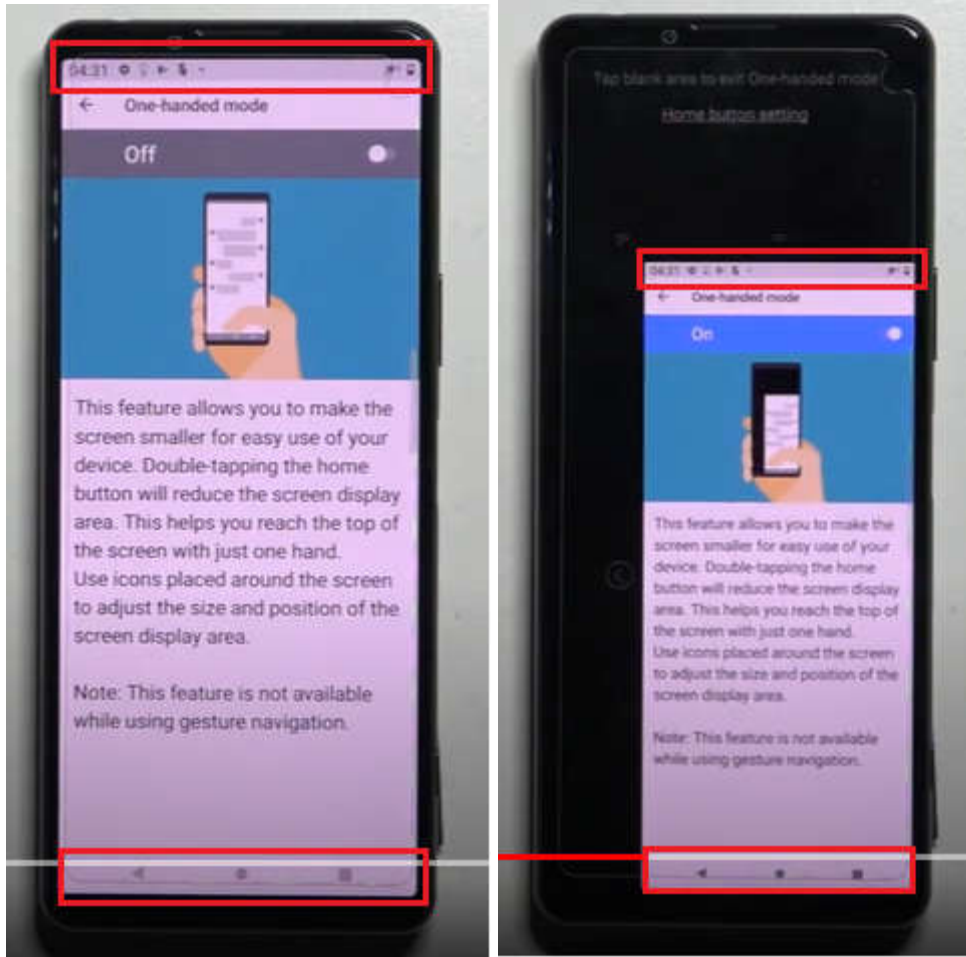
24. As shown below, the Accused Instrumentality performs the step of wherein a size of the enlarged upper area and enlarged lower area in relation to the enlarged UI maintains the ratio. As shown below, the upper area and lower area changes in proportion, during one-hand mode, defining a ratio.



(E.g., <https://www.youtube.com/watch?v=uDKwnTMm124>).



(E.g., <https://www.youtube.com/watch?v=uDKwnTMm124>).



(E.g., <https://www.youtube.com/watch?v=uDKwnTMm124>).

25. The Accused Instrumentality satisfies the limitation of dependent claim 2 because, as shown below, the Accused Instrumentality performs the step of wherein the reduced UI is displayed on a left side, a lower left side, a right side, or a lower right side of the display unit. As shown below, the reduced UI can be displayed on a lower left side or a lower right side of the display unit.

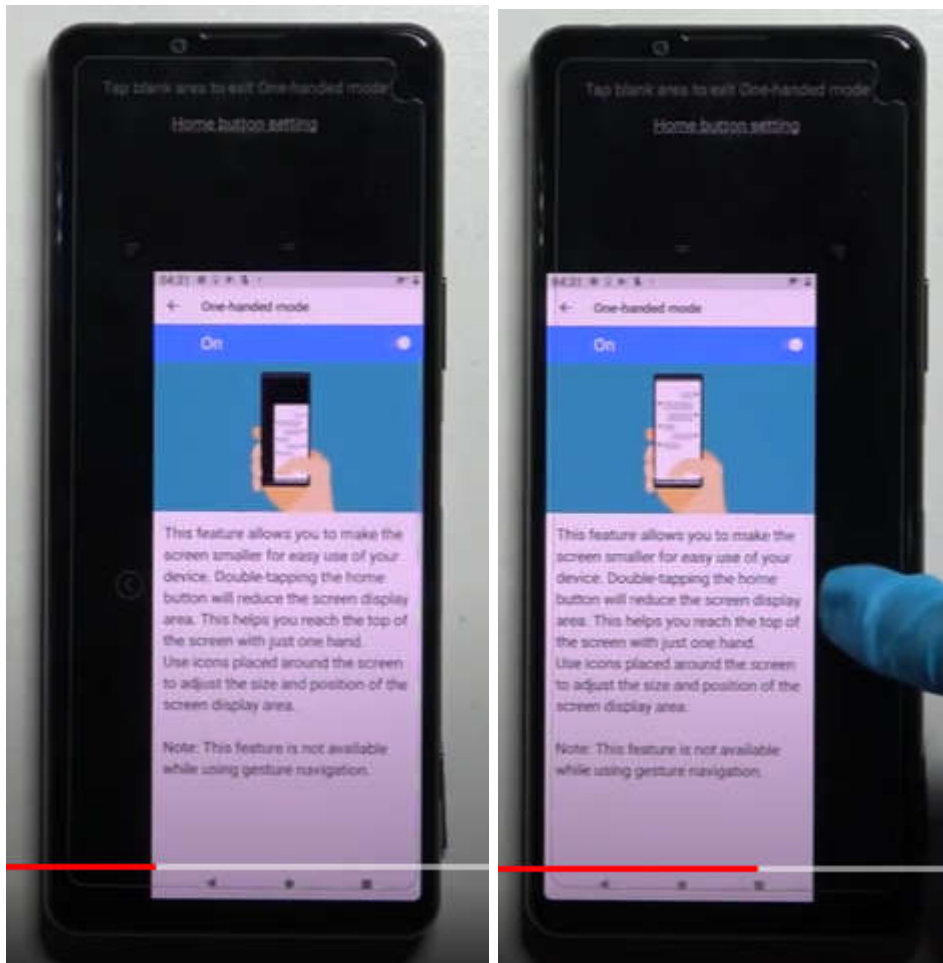
## One-handed mode

Enable One-handed mode to adjust the display size so you can type with one hand more easily.

- 1 Find and tap [Settings] > [Display] > [Advanced] > [One-handed mode].
- 2 Tap the [One-handed mode] switch to enable or disable the function.
- 3 To shrink the screen, double-tap ● (Home button).

To exit One-handed mode, double-tap ● (Home button) again or tap an empty area on the screen.

(E.g., <https://helpguide.sony.net/mobile/xperia-5m3/v1/en/contents/TP1000485660.html>).



(E.g., <https://www.youtube.com/watch?v=uDKwnTMm124>).



26. The Accused Instrumentality satisfies the limitation of dependent claim 4 because, as shown below, the Accused Instrumentality performs the step of receiving a third touch event (e.g., swipe up diagonally from bottom left corner of the screen); shifting the reduced UI to a position that is adjacent to a left side of the display unit in accordance with the third touch event. As shown below, the Accused Instrumentality displays an icon for adjusting the position of the reduced form of display.

### One-handed mode

Enable One-handed mode to adjust the display size so you can type with one hand more easily.

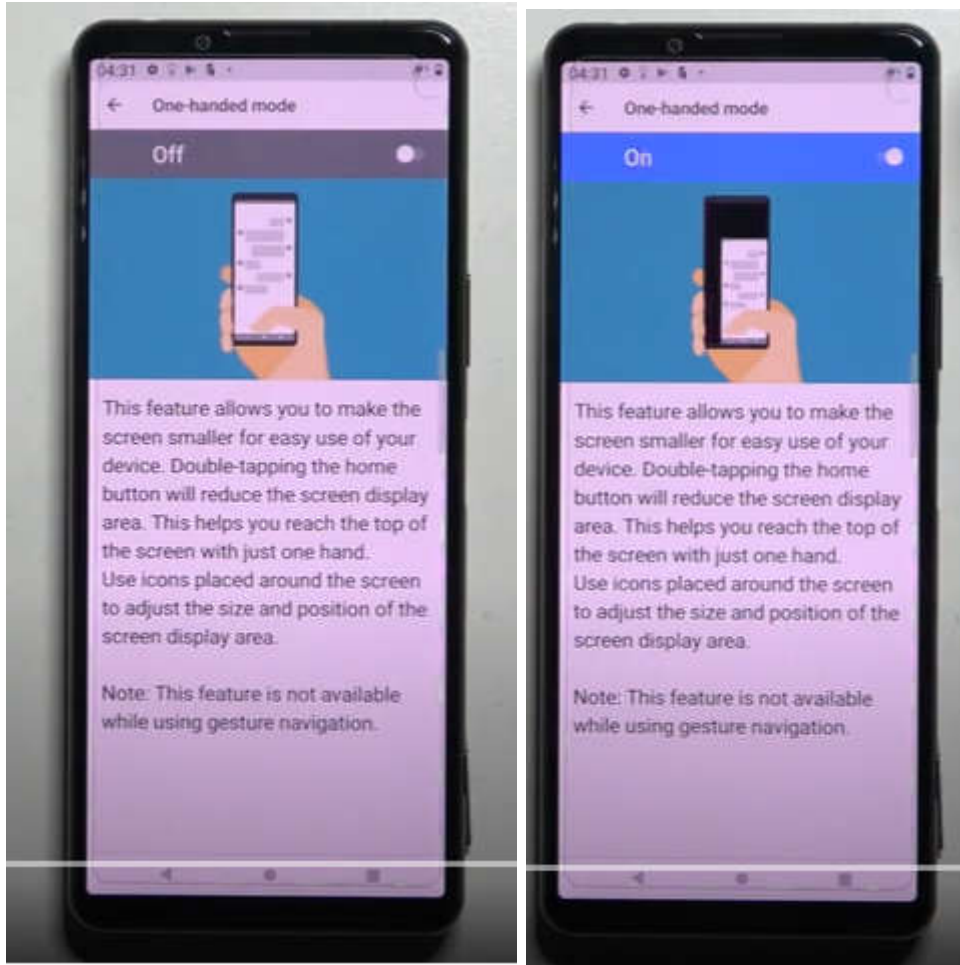
**1 Find and tap [Settings] > [Display] > [Advanced] > [One-handed mode].**

**2 Tap the [One-handed mode] switch to enable or disable the function.**

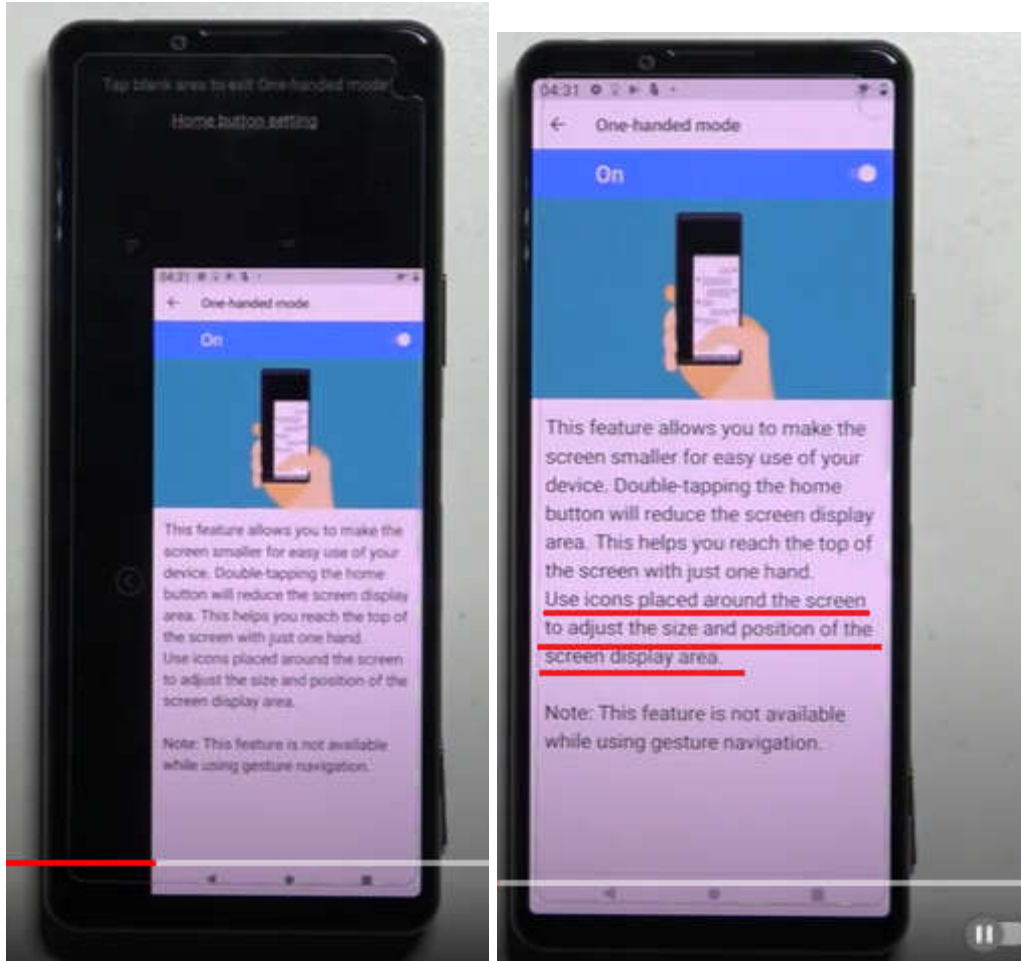
**3 To shrink the screen, double-tap ● (Home button).**

To exit One-handed mode, double-tap ● (Home button) again or tap an empty area on the screen.

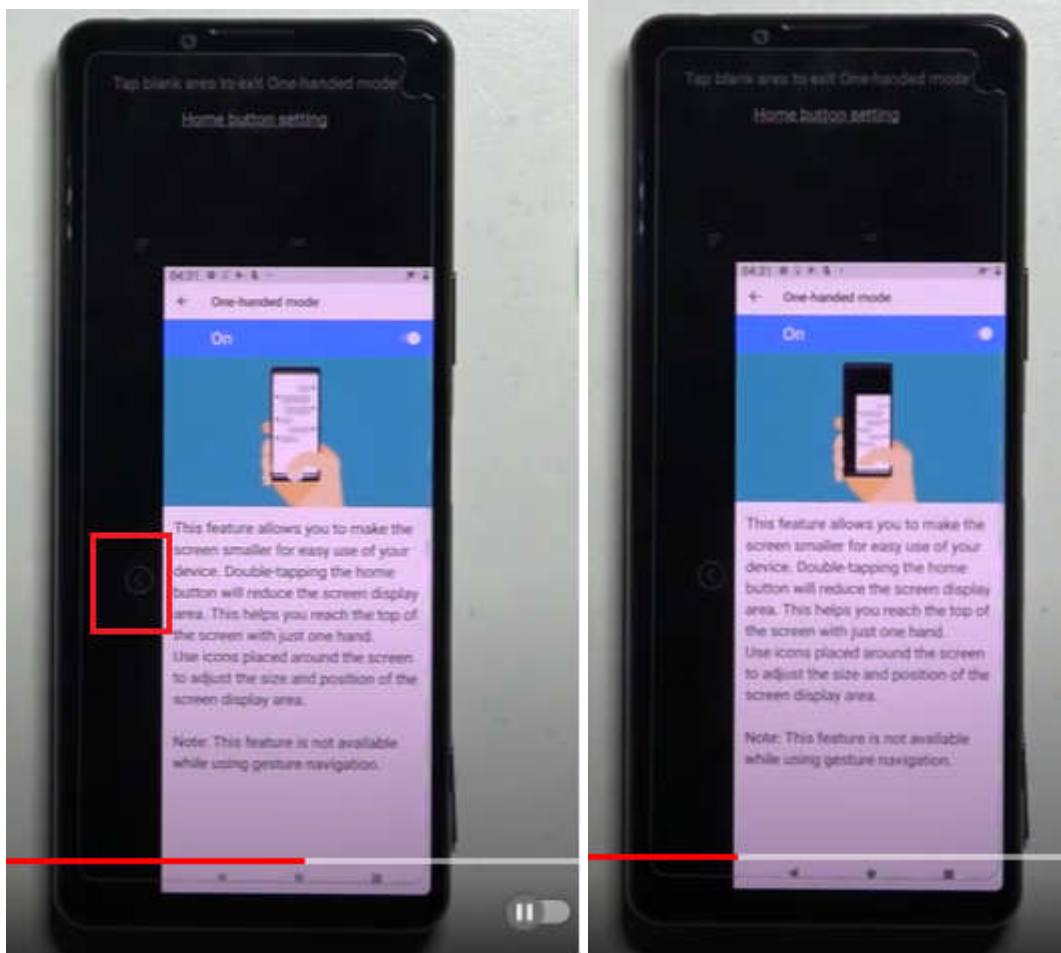
(E.g., <https://helpguide.sony.net/mobile/xperia-5m3/v1/en/contents/TP1000485660.html>).



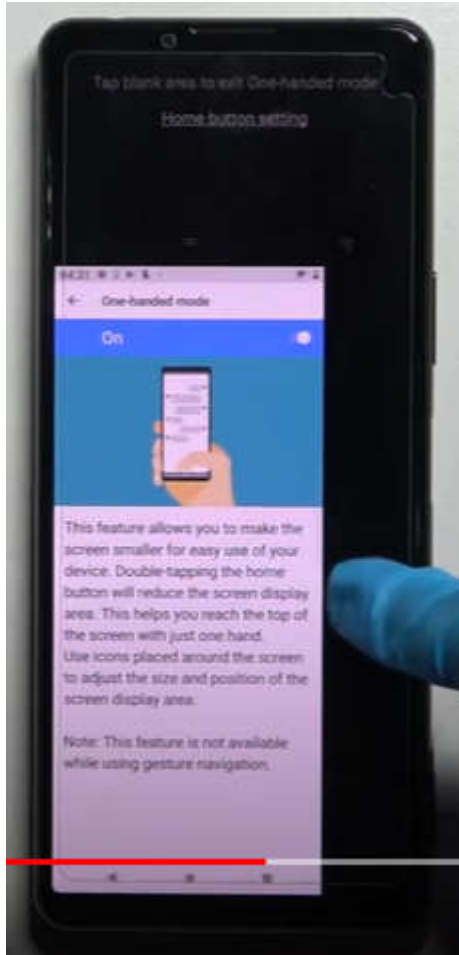
(E.g., <https://www.youtube.com/watch?v=uDKwnTMm124>).



(E.g., <https://www.youtube.com/watch?v=uDKwnTMm124>).



(E.g., <https://www.youtube.com/watch?v=uDKwnTMm124>).



(E.g., <https://www.youtube.com/watch?v=uDKwnTMm124>).

27. The Accused Instrumentality satisfies the limitation of dependent claim 5 because, as shown below, the Accused Instrumentality performs the step of receiving a third touch event (e.g., swipe up diagonally from bottom right corner of the screen); shifting the reduced UI to a position that is adjacent to a right side of the display unit in accordance with the third touch event. As shown below, the Accused Instrumentality displays an icon for adjusting the position of the reduced form of display.

## One-handed mode

---

Enable One-handed mode to adjust the display size so you can type with one hand more easily.

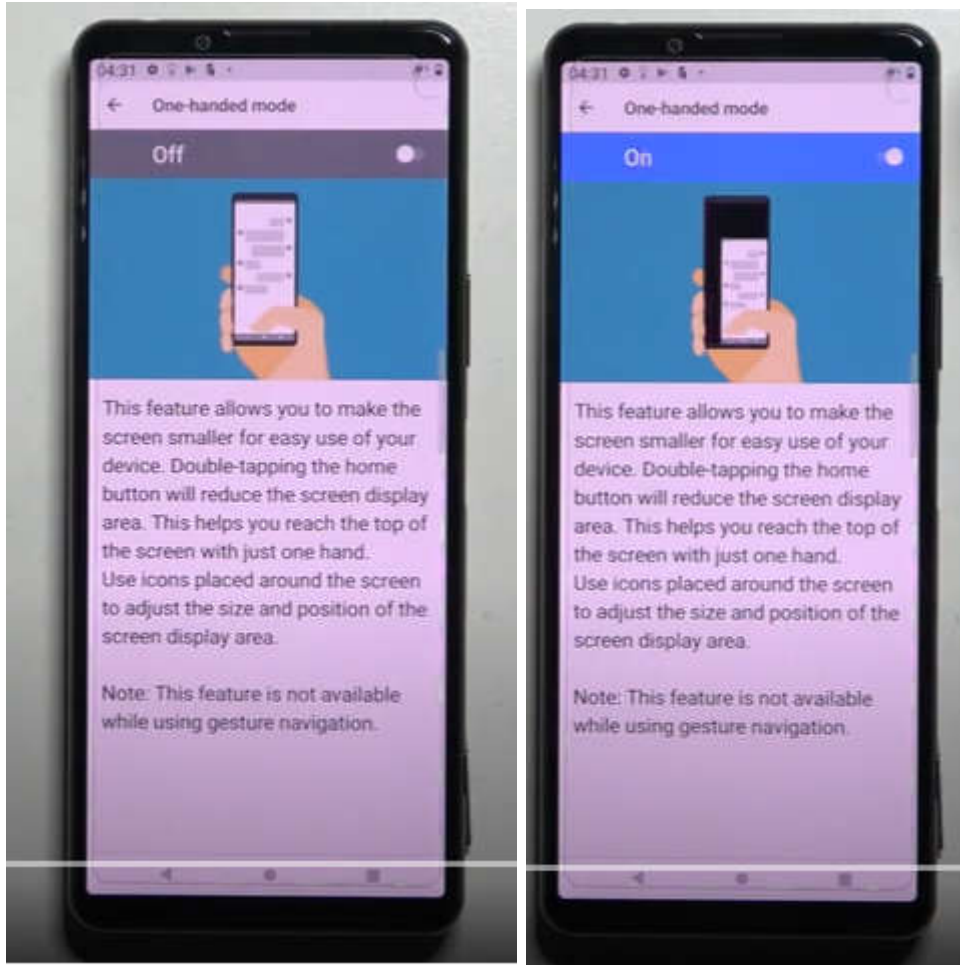
- 1 Find and tap [Settings] > [Display] > [Advanced] > [One-handed mode].
- 2 Tap the [One-handed mode] switch to enable or disable the function.
- 3 To shrink the screen, double-tap ● (Home button).

To exit One-handed mode, double-tap ● (Home button) again or tap an empty area on the screen.

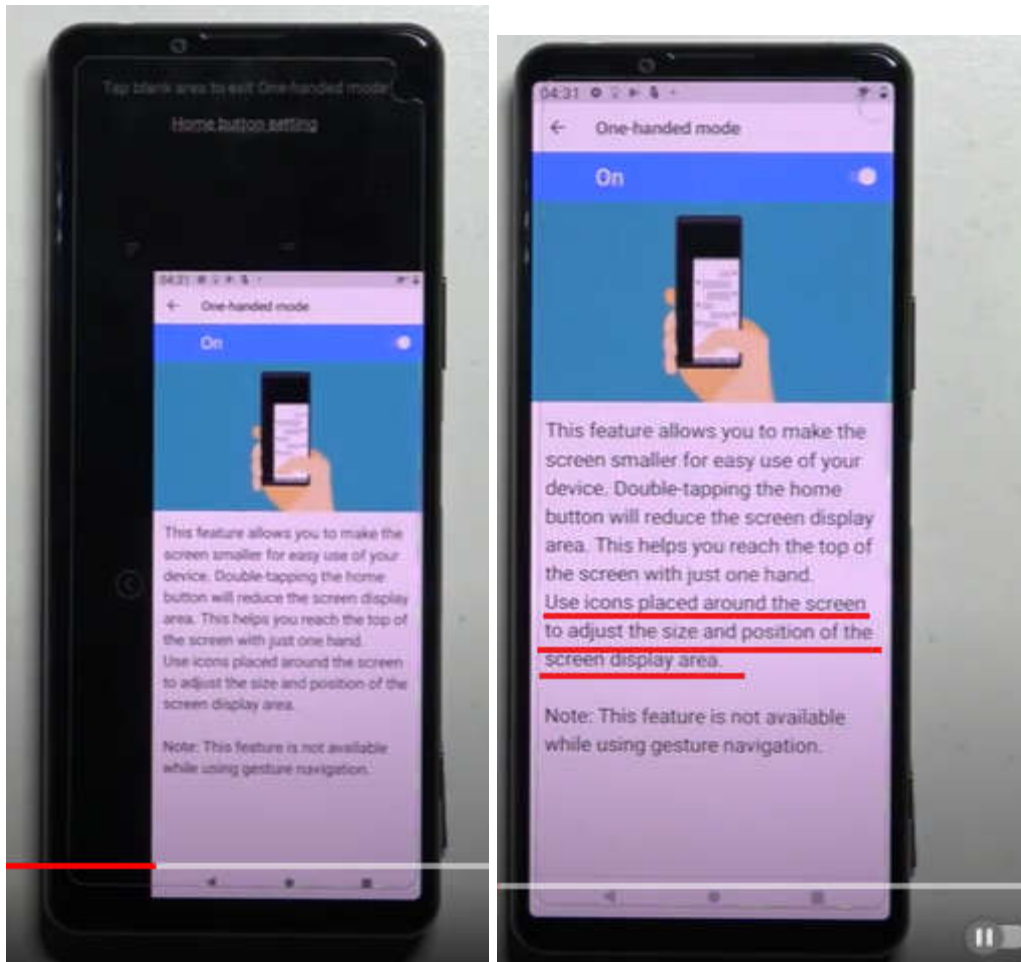
### To adjust the position of the screen

- To move the screen to the left side or to the right side: tap ◀ (Left arrow icon) or ▶ (Right arrow icon) accordingly.
- To move the screen upwards or downwards: drag the horizontal stripes at the edge of the resized screen.
- To resize the screen: drag ◻ (Resize screen icon) at the edge of the resized screen.

(E.g., <https://helpguide.sony.net/mobile/xperia-5m3/v1/en/contents/TP1000485660.html>).

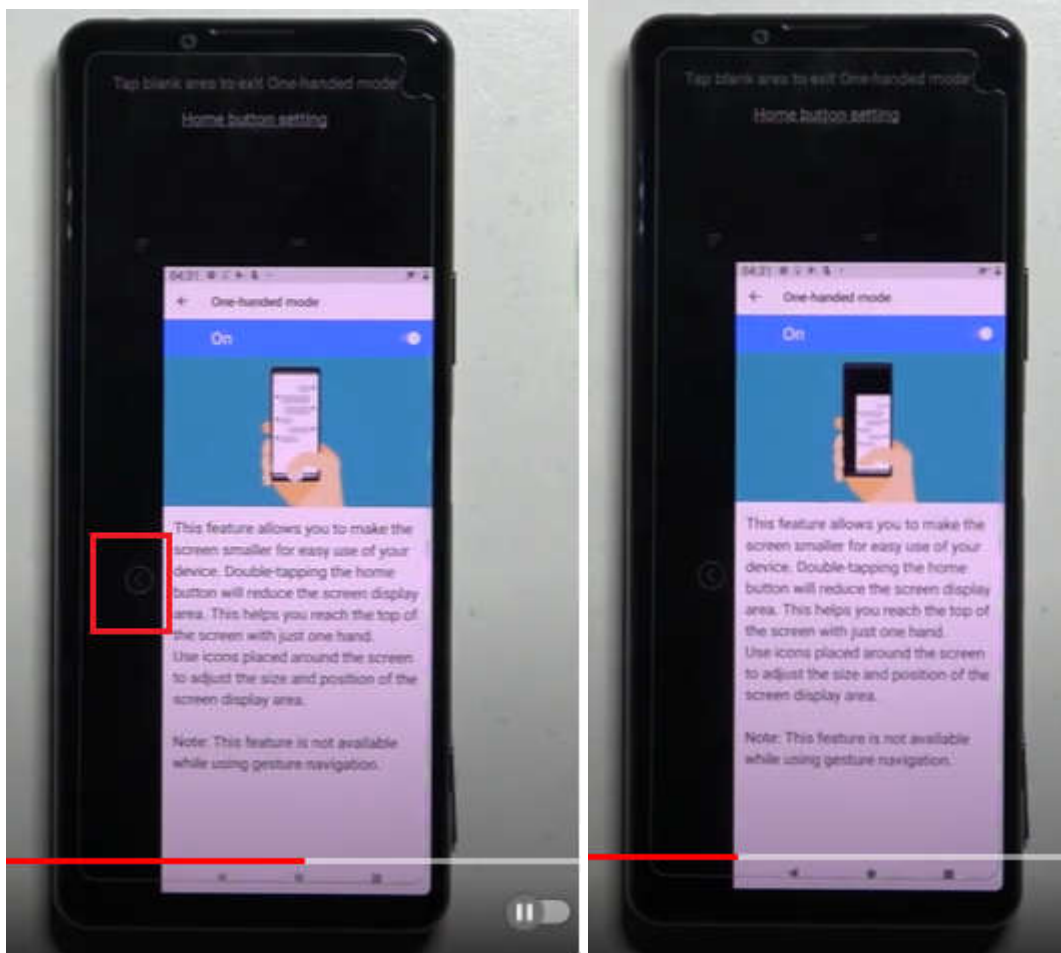


(E.g., <https://www.youtube.com/watch?v=uDKwnTMm124>).

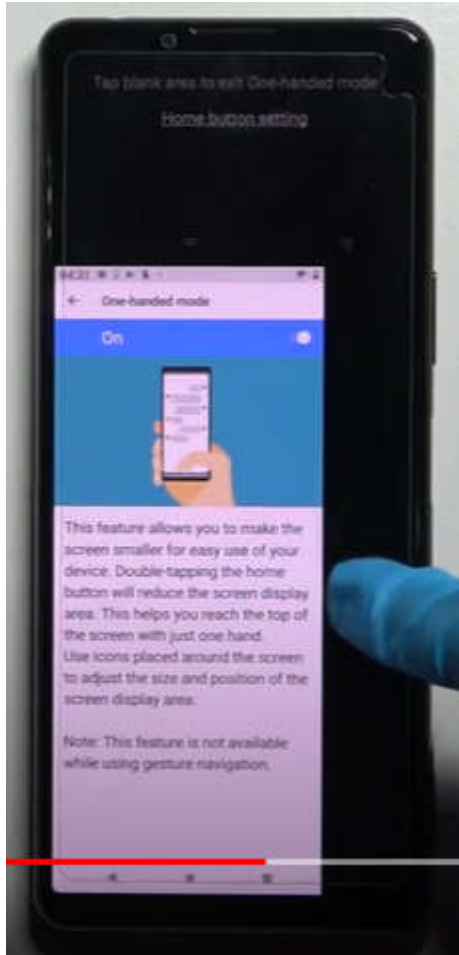


(E.g., <https://www.youtube.com/watch?v=uDKwnTMm124>).





(E.g., <https://www.youtube.com/watch?v=uDKwnTMm124>).



(E.g., <https://www.youtube.com/watch?v=uDKwnTMm124>).

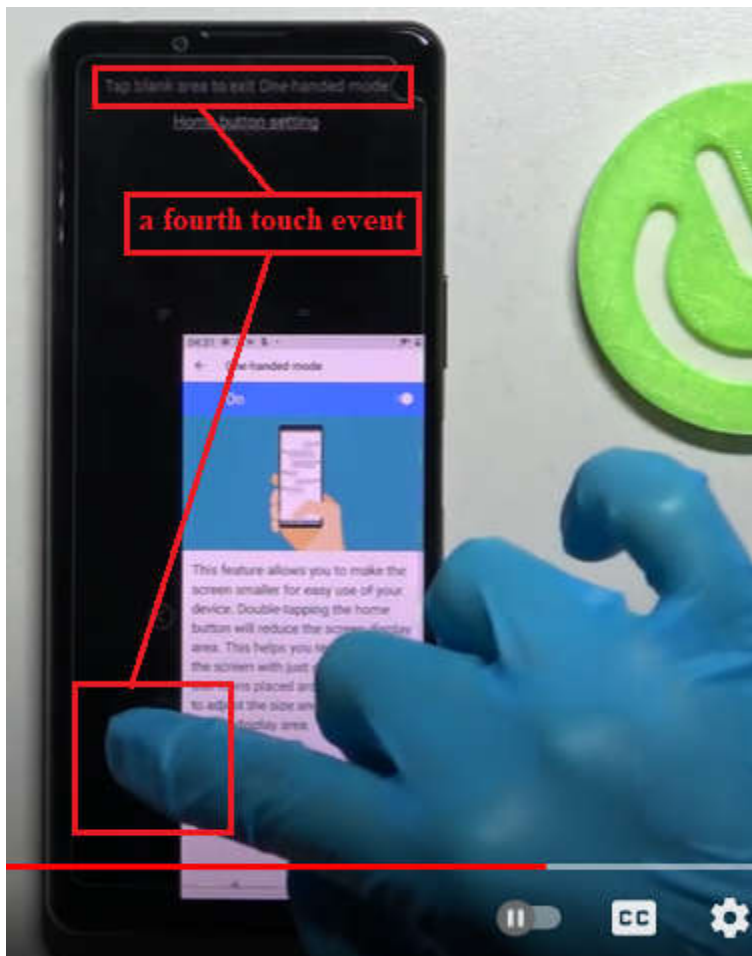
28. The Accused Instrumentality satisfies the limitation of dependent claim 9 because, as shown below, the Accused Instrumentality performs the step of receiving a fourth touch event (e.g., tapping outside reduced display area); resizing the reduced UI to the initial UI size (full screen) in accordance with the fourth touch event.

## One-handed mode

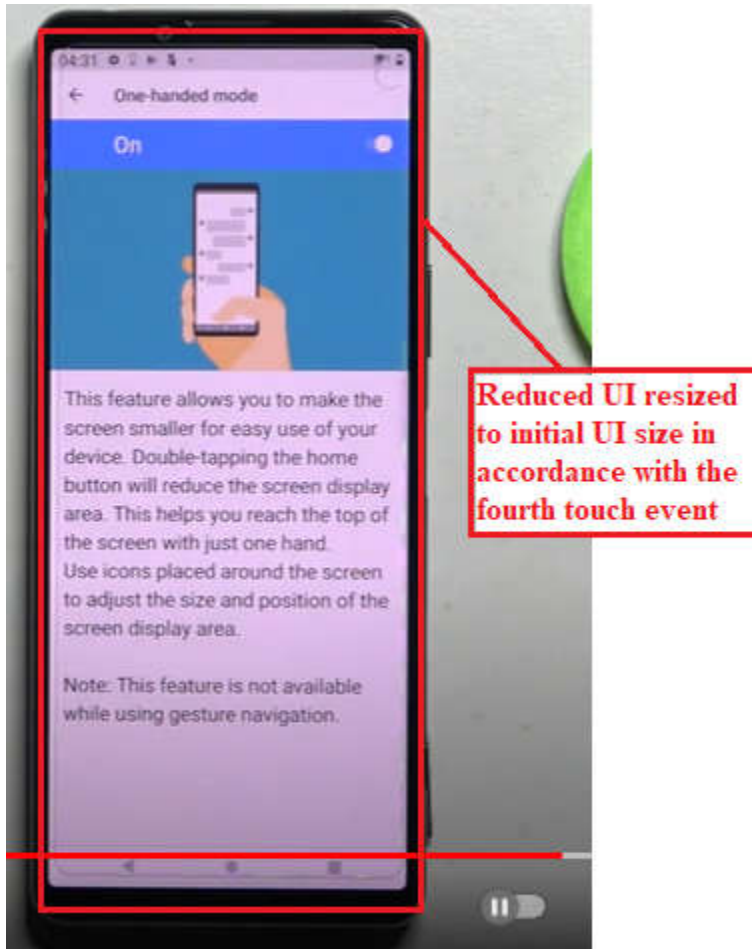
Enable One-handed mode to adjust the display size so you can type with one hand more easily.

- 1 Find and tap [Settings] > [Display] > [Advanced] > [One-handed mode].
- 2 Tap the [One-handed mode] switch to enable or disable the function.
- 3 To shrink the screen, double-tap ● (Home button).  
To exit One-handed mode, double-tap ● (Home button) again or tap an empty area on the screen.

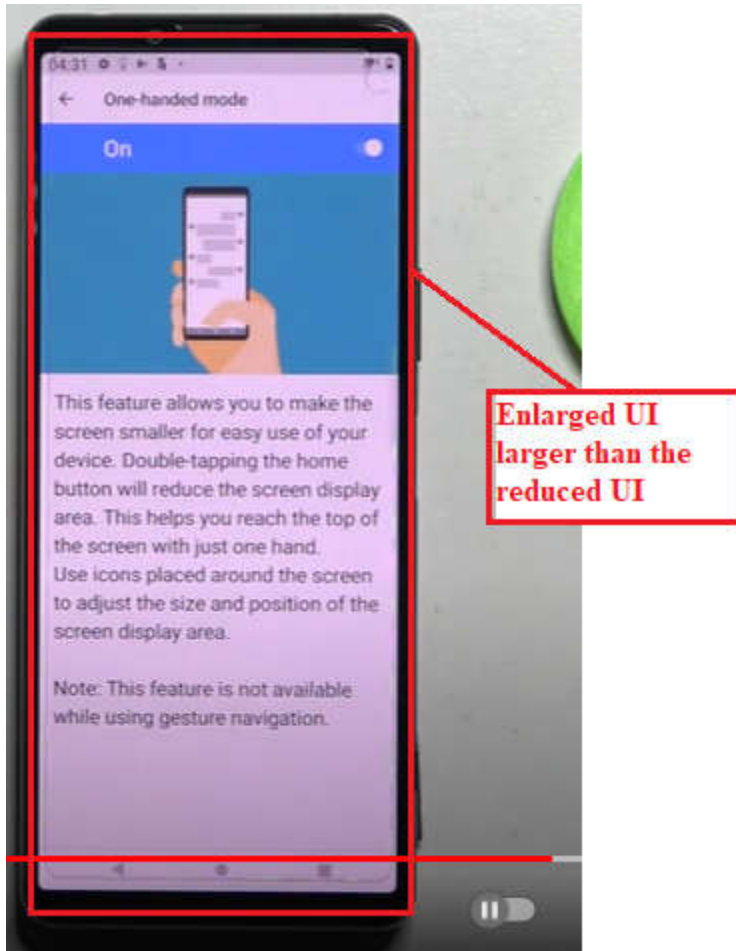
(E.g., <https://helpguide.sony.net/mobile/xperia-5m3/v1/en/contents/TP1000485660.html>).



(E.g., <https://www.youtube.com/watch?v=uDKwnTMm124>).

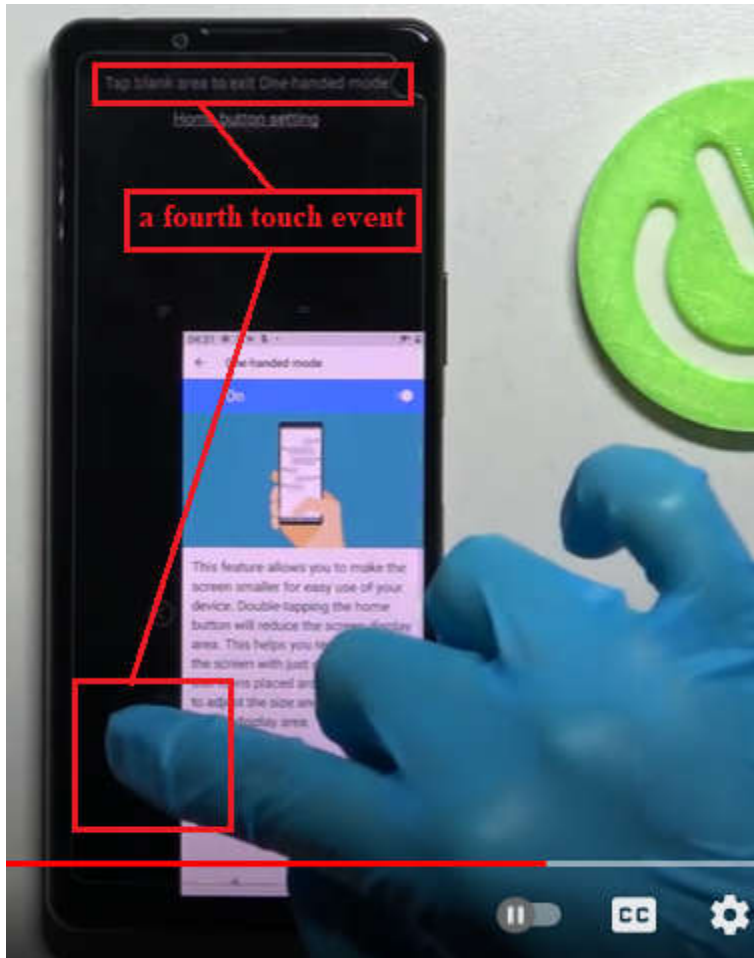


(E.g., <https://www.youtube.com/watch?v=uDKwnTMm124>).

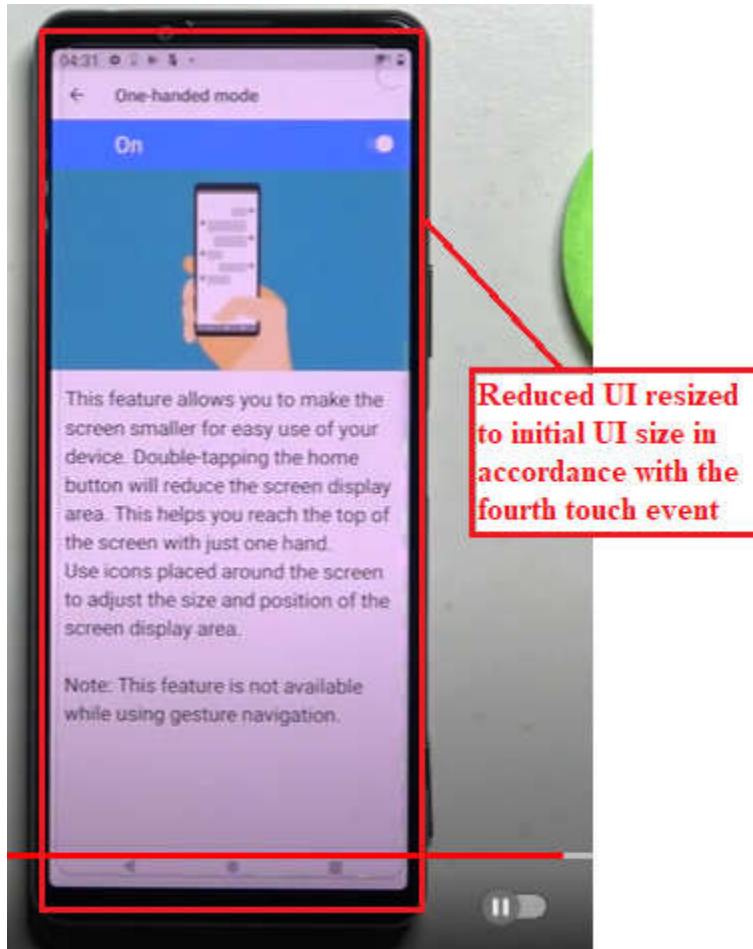


(E.g., <https://www.youtube.com/watch?v=uDKwnTMm124>).

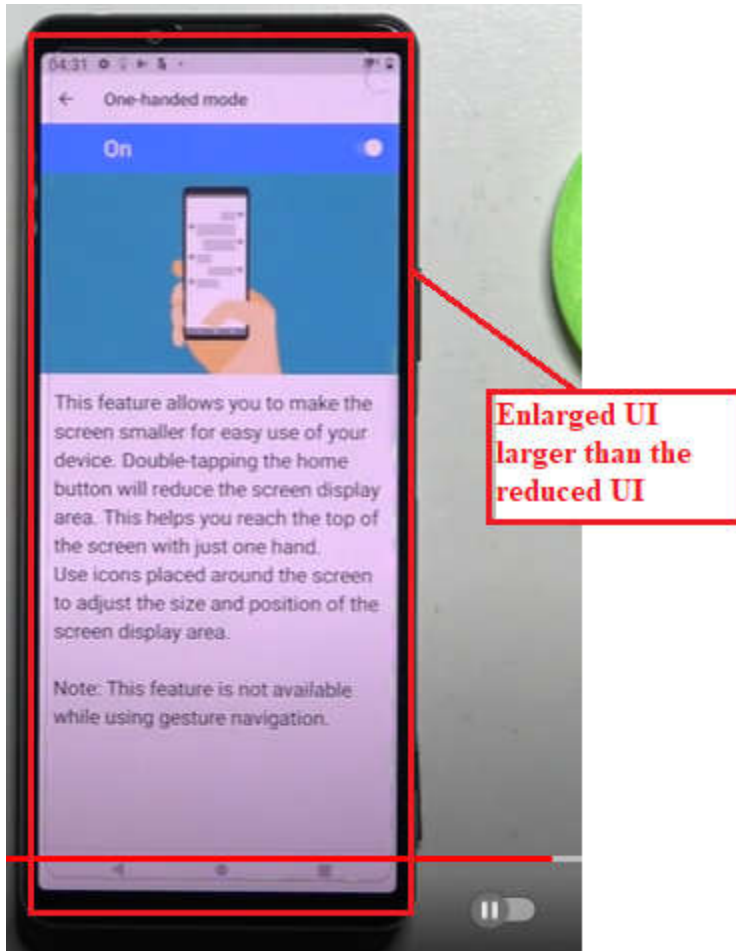
29. The Accused Instrumentality satisfies the limitation of dependent claim 10 because, as shown below, the Accused Instrumentality performs the step of receiving a fourth touch event (e.g., tapping outside reduced display area); resizing the enlarged UI to the initial UI size (full screen) in accordance with the fourth touch event.



(E.g., <https://www.youtube.com/watch?v=uDKwnTMm124>).



(E.g., <https://www.youtube.com/watch?v=uDKwnTMm124>).



(E.g., <https://www.youtube.com/watch?v=uDKwnTMm124>).





(E.g., <https://www.youtube.com/watch?v=uDKwnTMm124>).

30. Plaintiff has been damaged as a result of Defendant's infringing conduct. Defendant is thus liable to Plaintiff for damages in an amount that adequately compensates Plaintiff for such Defendant's infringement of the '908 patent, *i.e.*, in an amount that by law cannot be less than would constitute a reasonable royalty for the use of the patented technology, together with interest and costs as fixed by this Court under 35 U.S.C. § 284.

31. The claims of the '908 patent are method claims to which the marking requirements are not applicable. Plaintiff has therefore complied with the marking statute.

**V. JURY DEMAND**

Plaintiff, under Rule 38 of the Federal Rules of Civil Procedure, requests a trial by jury of any issues so triable by right.

**VI. PRAYER FOR RELIEF**

WHEREFORE, Plaintiff respectfully requests that the Court find in its favor and against Defendant, and that the Court grant Plaintiff the following relief:

- a. Judgment that one or more claims of United States Patent No. 11,262,908 have been infringed, either literally and/or under the doctrine of equivalents, by Defendant;
- b. Judgment that Defendant account for and pay to Plaintiff all damages to and costs incurred by Plaintiff because of Defendant's infringing activities and other conduct complained of herein, and an accounting of all infringements and damages not presented at trial;
- c. That Plaintiff be granted pre-judgment and post-judgment interest on the damages caused by Defendant's infringing activities and other conduct complained of herein; and
- d. That Plaintiff be granted such other and further relief as the Court may deem just and proper under the circumstances.

July 29, 2022

NI, WANG & MASSAND, PLLC

OF COUNSEL:

David R. Bennett  
Direction IP Law  
P.O. Box 14184  
Chicago, IL 60614-0184  
(312) 291-1667  
dbennett@directionip.com

/s/ Hao Ni  
Hao Ni  
8140 Walnut Hill Lane, Suite 500  
Dallas, TX 75231  
Telephone: (972) 331-4600  
Email: hni@nilawfirm.com

*Attorneys for Plaintiff Arability IP LLC*