

**IN THE UNITED STATES DISTRICT COURT
FOR THE WESTERN DISTRICT OF TEXAS
AUSTIN DIVISION**

BANDSPEED, LLC,

Plaintiff,

v.

MPOW TECHNOLOGY CO., LTD.

Defendant.

§
§
§
§
§
§
§
§
§
§
§
§

CASE NO. 1:23-cv-558

JURY TRIAL DEMANDED

ORIGINAL COMPLAINT

Plaintiff Bandspeed, LLC (“Bandspeed”), by and through its attorneys, files its Original Complaint against defendant MPOW Technology Co., Ltd. (“MPOW” or “Defendant”), and hereby alleges as follows:

I. NATURE OF ACTION

1. This is a patent infringement action to end Defendant’s unauthorized and infringing manufacture, use, sale, offering for sale, and/or importation of methods and products incorporating Bandspeed’s patented inventions.

2. Bandspeed is the owner of all right, title, and interest in and to United States Patent No. 7,027,418 (“the ’418 Patent”), issued on April 11, 2006 for “Approach for Selecting Communications Channels Based on Performance.”

3. Bandspeed is the owner of all right, title, and interest in and to United States Patent No. 7,477,624 (“the ’624 Patent”), issued on January 13, 2009 for “Approach for Managing the Use of Communications Channels Based on Performance.”

4. Bandspeed is the owner of all right, title, and interest in and to United States Patent No. 7,570,614 (“the ’614 Patent”), issued on August 4, 2009 for “Approach for Managing Communications Channels Based on Performance.”

5. Bandspeed is the owner of all right, title, and interest in and to United States Patent No. 7,903,608 (“the ’608 Patent”), issued on March 8, 2011 for “Approach for Managing the Use of Communications Channels Based on Performance.”

6. Bandspeed is the owner of all right, title, and interest in and to United States Patent No. 8,542,643 (“the ’643 Patent”), issued on September 24, 2013 for “Approach for Managing the Use of Communications Channels Based on Performance.”

7. Bandspeed is the owner of all right, title, and interest in and to United States Patent No. 8,873,500 (“the ’500 Patent”), issued on October 28, 2014 for “Approach for Managing the Use of Communications Channels Based on Performance.”

8. Bandspeed is the owner of all right, title, and interest in and to United States Patent No. 9,379,769 (“the ’769 Patent”), issued on June 28, 2016 for “Approach for Managing the Use of Communications Channels Based on Performance.”

9. Bandspeed is the owner of all right, title, and interest in and to United States Patent No. 9,883,520 (“the ’520 Patent”), issued on January 30, 2018 for “Approach for Managing the Use of Communications Channels Based on Performance.”

10. The ’418 Patent, ’624 Patent, ’614 Patent, ’608 Patent, ’643 Patent, ’500 Patent, ’769 Patent, ’520 Patent are, collectively, the “Bluetooth Classic Patents.”

11. The ’608 Patent, ’643 Patent, ’500 Patent, ’769 Patent and ’520 Patent are, collectively, the “LE Patents.”

12. The Bluetooth Classic Patents and the LE Patents are, collectively, “Bandspeed’s Patents” or “the Bandspeed Patents” or “Patents.”

13. Upon information and belief, Defendant has been and currently is infringing, contributing to the infringement of, and/or inducing the infringement of Bandspeed’s Patents, by, among other things, making, using, selling, importing, and/or offering for sale, within the territorial boundaries of the United States, products that are covered by one or more claims of Bandspeed’s Patents.

14. Defendant manufactures, provides, sells, offers for sale, imports, and/or distributes infringing products and services; and/or induces others to make and use its products and services in an infringing manner; and/or contributes to the making and use of infringing products and services by others, including its customers, who directly infringe the Patents.

II. THE PARTIES

15. Plaintiff Bandspeed is a Texas limited liability company with its principal place of business located in Austin, Texas.

16. Upon information and belief, Defendant is a Chinese company entity with an established place of business at Flat/Rm 605, 6/F, Fa Yuen Commercial Building, 75-77 Fa Yuen Street, Mongkok KL, Hong Kong, China.

17. Upon information and belief, Defendant is authorized to do business in Texas.

18. Defendant may be served with process by serving the Texas Secretary of State, James E. Rudder Building, 1019 Brazos Street, Austin, Texas 78701, as its agent for service because it engages in business in Texas but has not designated or maintained a resident agent for service of process in Texas as required by statute. This action arises out of that business.

III. JURISDICTION AND VENUE

19. This is an action for patent infringement arising under the Patent Laws of the United States, in particular 35 U.S.C. §§271, 281, 283, 284, and 285. This Court has jurisdiction over the subject matter of this action under 28 U.S.C. §1331 and 1338(a).

20. This Court has personal jurisdiction over Defendant and venue is proper in this Court pursuant to 28 U.S.C. §1391(c).

IV. NOTICE

21. On May 12, 2020, Bandspeed sent a letter to Defendant notifying Defendant of the Bandspeed Patents and the nature of Defendant's infringing activities (the "Notice Letter"). Defendant's counsel responded on July 10, 2020.

22. Additionally, Defendant had knowledge of the Bandspeed Patents and the infringing conduct as early as the date when Bandspeed effected service of the Complaint.

V. PLAINTIFF'S PATENTS

23. The claims of the Patents describe inventive features and combinations relating to adaptive frequency hopping and the ability to avoid interference over communications channels that improved upon prior art systems and methods. In other words, the claims of the Patents generally describe novel techniques "for selecting sets of communications channels based on channel performance." '418 Patent at 4:49-50.

24. The Patents improve upon frequency hopping communications systems that existed at the time of the invention. One problem with frequency hopping communications systems is that coexistence problems arise between the frequency hopping communications system and non-frequency hopping communications systems that operate in the same frequency band. While the frequency hopping communications system hops over the entire frequency band, the non-frequency hopping communications systems occupy separate parts of the frequency band.

25. The claims of the Patents solve the coexistence problem by using a method or system not conventional at the time of the invention: adaptive frequency hopping. As described in the Patents, a set of channels is used for communication between devices according to a frequency hopping (“FH”) protocol. Another set of communications channels is selected in a similar manner when a specified criterion is satisfied after expiration of a specified length of time, when the performance of at least one of the channels in the set of channels satisfies another performance criterion, or when a specified number of the set of channels satisfies yet another performance criterion. *See, e.g.*, ’608 Patent at 4:64-5:6. “For example, the selection criteria may be to select the good channels but not the bad channels.” *Id.* at 6:62-64. The claimed system first selects an initial set of channels, and then periodically selects sets of channels based on later performance of the communications channels. *Id.* at 6:28-30; 4:22-24. The claimed system classifies a communication channel based on channel performances and one or more classification criteria. *Id.* at 15:8-10. “For example, a channel may be classified as ‘good’ or ‘bad’ based on the results of the channel performance testing by applying one or more performance measurements.” *Id.* at 15:10-14.

26. The Patents teach a method or device using a frequency hopping protocol that “transmits data on one channel, hops to the next channel in the hopping sequence to transmit more data and continues by transmitting data on subsequent channels in the hopping sequence.” *See, e.g.*, ’500 Patent at 2:34-38. “When the FH communications system hops over part of the frequency band occupied by an NFH [non-frequency hopping] communications system, there may be interference between the systems.” *Id.* at 3:33-36. “Interference results in data transmission errors, such as an increase in the bit error rate (BER) or the loss of data packets, resulting in reduced transmission quality and performance and the need to retransmit the data.” *Id.* at 3:58-61. The

invention avoids these problems by testing the plurality of communications channels and using a subset of channels that have been identified as good after testing for communications between participants using an adapted hopping sequence. *Id.* at 12:34-41 and 18:8-12.

VI. DEFENDANT'S ACTS

A. Infringing Bluetooth Classic Products

27. Defendant manufactures, provides, sells, uses, imports, supplies, offers for sale, and/or distributes Infringing Products, such as integrated circuits, or a set of integrated circuits for wireless communications devices, that use, practice, and/or comply with the Bluetooth Core Specification Version 2.0+EDR or higher, and other products that operate in a reasonably similar manner (“Infringing Bluetooth Classic Products”).

28. The Infringing Bluetooth Classic Products infringe the Bluetooth Classic Patents.

29. Upon information and belief, Defendant takes steps to test the Infringing Products to ensure compliance with the relevant Bluetooth Core Specification and to qualify the Infringing Products for Bluetooth certification.

30. Upon information and belief, Defendant certifies to the Bluetooth Special Interest Group (“Bluetooth SIG”) that Infringing Bluetooth Classic Products are compliant with the Bluetooth Core Specification Version 2.0+EDR or higher.

31. Through its actions, Defendant has infringed the Patents and actively induced others to infringe and contributed to the infringement by others of the Patents, throughout the United States.

32. Adaptive frequency hopping is material to practicing the invention described by the Patents.

33. Defendant intentionally manufactures and sells Infringing Bluetooth Classic Products that are designed to provide adaptive frequency hopping in a manner that infringes the Patents.

34. On information and belief, Defendant takes steps to test the Infringing Bluetooth Classic Products to ensure compliance with the Bluetooth Core Specification and to qualify an Infringing Bluetooth Classic Product for Bluetooth certification.

35. The Infringing Bluetooth Classic Products are certified as compliant with the Bluetooth Core Specification Version 2.0+EDR or higher. In connection with compliance, for qualifying Bluetooth products, Defendant submitted a Core Implementation Compliance Statement (or Core ICS). The Core ICS requires Defendant to disclose certain product capabilities, including adaptive frequency hopping (AFH), which is found in Table 26 of the Link Manager Protocol section.

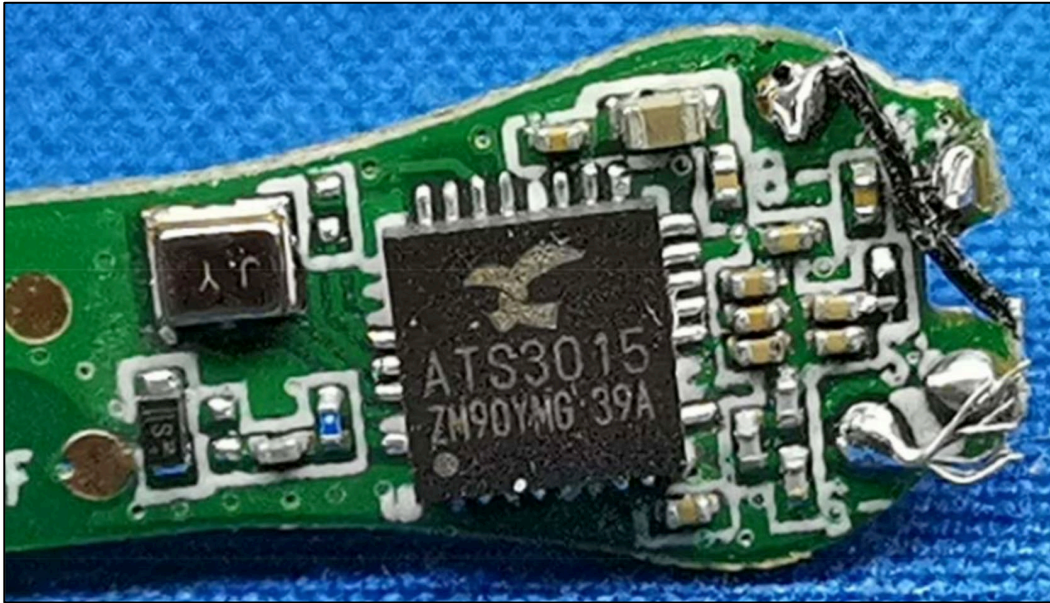
36. On information and belief, Defendant has submitted Core ICSs that indicate “Yes” for support of certain features of adaptive frequency hopping that infringe the Patents.

37. On information and belief, Defendant has certified that the Infringing Bluetooth Classic Products are compliant with “Adaptive Frequency Hopping Kernel” as defined by Item 2 of the Physical Channel table within the Baseband section of the Implementation Conformance Statement (ICS).

38. For example, on information and belief, the MPOW MX3 True Wireless Earbuds (the “Exemplary Infringing Product”) implements an “Adaptive Frequency Hopping Kernel” as defined by Item 2 of the Physical Channel table within the Baseband section of the ICS for the Exemplary Infringing Bluetooth Classic Product.

39. The Exemplary Infringing Product contains a Bluetooth System on a Chip made by Actions Technology Co., Ltd.

40. The Exemplary Infringing Product contains an ATS3015 chipset.



1

41. On information and belief, the Infringing Bluetooth Classic Products implement “Adaptive Frequency Hopping” as defined by Item 16 of the Supported Features table (i.e., Table 2) within the Link Manager section of the ICS. On information and belief, Defendant has certified that the Infringing Bluetooth Classic Products are compliant with “Adaptive Frequency Hopping” as defined by Item 16 of the Supported Features table (i.e., Table 2) within the Link Manager section of the ICS.

42. On information and belief, the Exemplary Infringing Product implements “Adaptive Frequency Hopping” as defined by Item 16 of the Supported Features table (i.e., Table 2) within the Link Manager section of the ICS for the Exemplary Infringing Bluetooth Classic

¹ <https://fccid.io/2AMH2-BH480B/Internal-Photos/Internal-Photos-5212939>.

Product. On information and belief, Defendant has certified that the Exemplary Infringing Product is compliant with “Adaptive Frequency Hopping” as defined by Item 16 of the Supported Features table (i.e., Table 2) within the Link Manager section of the ICS for the Exemplary Infringing Bluetooth Classic Product.

43. On information and belief, the Infringing Bluetooth Classic Products implement “AFH Switch as master” as defined by Item 1 of the Adaptive Frequency Hopping table (i.e., Table 26) within the Link Manager section of the ICS. On information and belief, Defendant has certified that the Infringing Bluetooth Classic Products are compliant with “AFH Switch as master” as defined by Item 1 of the Adaptive Frequency Hopping table (i.e., Table 26) within the Link Manager section of the ICS.

44. On information and belief, the Exemplary Infringing Product implements “AFH Switch as master” as defined by Item 1 of the Adaptive Frequency Hopping table (i.e., Table 26) within the Link Manager section of the ICS for the Exemplary Infringing Bluetooth Classic Product. On information and belief, Defendant has certified that the Exemplary Infringing Product is compliant with “AFH Switch as master” as defined by Item 1 of the Adaptive Frequency Hopping table (i.e., Table 26) within the Link Manager section of the ICS for the Exemplary Infringing Bluetooth Classic Product.

45. On information and belief, the Infringing Bluetooth Classic Products include “Support of Channel Classification” as defined by Item 6 of the Adaptive Frequency Hopping table (i.e., Table 26) within the Link Manager section of the ICS. On information and belief, Defendant has certified that the Infringing Bluetooth Classic Products are compliant with “Support of Channel Classification” as defined by Item 6 of the Adaptive Frequency Hopping table (i.e., Table 26) within the Link Manager section of the ICS.

46. On information and belief, the Exemplary Infringing Product includes “Support of Channel Classification” as defined by Item 6 of the Adaptive Frequency Hopping table (i.e., Table 26) within the Link Manager section of the ICS for the Exemplary Infringing Bluetooth Classic Product. On information and belief, Defendant has certified that the Exemplary Infringing Product is compliant with “Support of Channel Classification” as defined by Item 6 of the Adaptive Frequency Hopping table (i.e., Table 26) within the Link Manager section of the ICS for the Exemplary Infringing Bluetooth Classic Product.

47. On information and belief, the Infringing Bluetooth Classic Products implement “Power Control” as defined by Item 10 of the Supported Features table (i.e., Table 2) within the Link Manager section of the ICS. On information and belief, Defendant has certified that the Infringing Bluetooth Classic Products are compliant with “Power Control” as defined by Item 10 of the Supported Features table (i.e., Table 2) within the Link Manager section of the ICS.

48. On information and belief, the Exemplary Infringing Product implements “Power Control” as defined by Item 10 of the Supported Features table (i.e., Table 2) within the Link Manager section of the ICS for the Exemplary Infringing Bluetooth Classic Product. On information and belief, Defendant has certified that the Exemplary Infringing Product is compliant with “Power Control” as defined by Item 10 of the Supported Features table (i.e., Table 2) within the Link Manager section of the ICS for the Exemplary Infringing Bluetooth Classic Product.

49. On information and belief, the Infringing Bluetooth Classic Products implement “Enhanced Power Control” as defined by Item 20 of the Supported Features table (i.e., Table 2) within the Link Manager section of the ICS. On information and belief, Defendant has certified that the Infringing Bluetooth Classic Products are compliant with “Enhanced Power Control” as

defined by Item 20 of the Supported Features table (i.e., Table 2) within the Link Manager section of the ICS.

50. On information and belief, the Exemplary Infringing Product implements “Enhanced Power Control” as defined by Item 20 of the Supported Features table (i.e., Table 2) within the Link Manager section of the ICS for the Exemplary Infringing Bluetooth Classic Product. On information and belief, Defendant has certified that the Exemplary Infringing Product is compliant with “Enhanced Power Control” as defined by Item 20 of the Supported Features table (i.e., Table 2) within the Link Manager section of the ICS for the Exemplary Infringing Bluetooth Classic Product.

51. The Infringing Bluetooth Classic Products are capable of performing adaptive frequency hopping.

52. The Exemplary Infringing Product is capable of performing adaptive frequency hopping.

53. The Infringing Bluetooth Classic Products are capable of operating in the 2.4 GHz ISM frequency band.

54. The Exemplary Infringing Product is capable of operating in the 2.4 GHz ISM frequency band.

55. The Infringing Bluetooth Classic Products are capable of participating in Bluetooth piconets with one or more other devices.

56. The Exemplary Infringing Product is capable of participating in Bluetooth piconets with one or more other devices.

57. The Infringing Bluetooth Classic Products are capable of transmitting data packets to other devices.

58. The Exemplary Infringing Product is capable of transmitting data packets to other devices.

59. The Infringing Bluetooth Classic Products are capable of receiving data packets from other devices.

60. The Exemplary Infringing Product is capable of receiving data packets from other devices.

61. The Infringing Bluetooth Classic Products are capable of transmitting and/or receiving data packets on multiple frequencies.

62. The Exemplary Infringing Product is capable of transmitting and/or receiving data packets on multiple frequencies.

63. The Infringing Bluetooth Classic Products are capable of transmitting and/or receiving data packets using a sequence of fewer than the total number of frequencies in the available band for a particular period of time.

64. The Exemplary Infringing Product is capable of transmitting and/or receiving data packets using a sequence of fewer than the total number of frequencies in the available band for a particular period of time.

65. The Infringing Bluetooth Classic Products are capable of transmitting and/or receiving data in defined time slots.

66. The Exemplary Infringing Product is capable of transmitting and/or receiving data in defined time slots.

67. The Infringing Bluetooth Classic Products are capable of changing the set of channels on which they transmit and/or receive data packets with other devices in a particular piconet during the connection lifetime of that piconet.

68. The Exemplary Infringing Product is capable of changing the set of channels on which they transmit and/or receive data packets with other devices in a particular piconet during the connection lifetime of that piconet.

69. The Infringing Bluetooth Classic Products are capable of sending and/or receiving the LMP_set_AFH PDU (packet data unit) or functional equivalent as it is defined in the Bluetooth Core Specification version 2.0+EDR.

70. The Exemplary Infringing Product is capable of sending and/or receiving the LMP_set_AFH PDU or functional equivalent as it is defined in the Bluetooth Core Specification version 2.0+EDR.

71. The Infringing Bluetooth Classic Products are capable of sending and/or receiving any packet that includes the AFH_Instant parameter or functional equivalent as it is defined in the Bluetooth Core Specification version 2.0+EDR.

72. The Exemplary Infringing Product is capable of sending and/or receiving any packet that includes the AFH_Instant parameter or functional equivalent as it is defined in the Bluetooth Core Specification version 2.0+EDR.

73. The Infringing Bluetooth Classic Products are capable of sending and/or receiving data packets that include the AFH_Channel_Map parameter or functional equivalent as it is defined in the Bluetooth Core Specification version 2.0+EDR.

74. The Exemplary Infringing Product is capable of sending and/or receiving data packets that include the AFH_Channel_Map parameter or functional equivalent as it is defined in the Bluetooth Core Specification Version 2.0+EDR.

75. The Infringing Bluetooth Classic Products are capable of selecting channels for transmission of data using the basic hop selection kernel in conformance with the Bluetooth Core Specification Version 2.0+EDR.

76. The Exemplary Infringing Product is capable of selecting channels for transmission of data using the basic hop selection kernel in conformance with the Bluetooth Core Specification Version 2.0+EDR.

77. The Infringing Bluetooth Classic Products are capable of classifying channels in the available frequency band as at least used or unused for communication within a particular piconet at a particular time.

78. The Exemplary Infringing Product is capable of classifying channels in the available frequency band as at least used or unused for communication within a particular piconet at a particular time.

79. The Infringing Bluetooth Classic Products are capable of using index and/or other data structures that represent frequency channels.

80. The Exemplary Infringing Product is capable of using index and/or other data structures that represent frequency channels.

81. The Infringing Bluetooth Classic Products are capable of using one or more registers or functionally equivalent data structures to store representations of frequency channels.

82. The Exemplary Infringing Product is capable of using one or more registers or functionally equivalent data structures to store representations of frequency channels.

83. The Infringing Bluetooth Classic Products are capable of using one or more remapping and/or substitution functions to select a channel for transmission of data.

84. The Exemplary Infringing Product is capable of using one or more remapping and/or substitution functions to select a channel for transmission of data.

85. The Infringing Bluetooth Classic Products are capable of using one or more reindexing and/or substitution operations to select a channel for transmission of data.

86. The Exemplary Infringing Product is capable of using one or more reindexing and/or substitution operations to select a channel for transmission of data.

87. The Infringing Bluetooth Classic Products are capable of representing a channel's status as at least good, bad, and/or unknown for transmission using a single bit.

88. The Exemplary Infringing Product is capable of representing a channel's status as at least good, bad, and/or unknown for transmission using a single bit.

89. The Infringing Bluetooth Classic Products are capable of representing a channel's status as at least used or unused for transmission using a single bit.

90. The Exemplary Infringing Product is capable of representing a channel's status as at least used or unused for transmission using a single bit.

91. Certain of Defendant's customers request, require, and/or engage features and capabilities, including adaptive frequency hopping, that comply with the Bluetooth Core Specification, and Defendant markets and advertises one or more of its Infringing Bluetooth Classic Products' compliance with the Bluetooth Core Specification regarding such features and capabilities.

92. Upon information and belief, certain of Defendant's customers request, require, and/or engage features and capabilities, including adaptive frequency hopping, that comply with the Bluetooth Core Specification, and Defendant markets and advertises its Infringing Bluetooth

Classic Products' compliance with the Bluetooth Core Specification regarding such features and capabilities.

93. Upon information and belief, certain of Defendant's customers request, require, and/or engage features and capabilities, including the low energy protocol, that comply with the Bluetooth Core Specification, and Defendant markets and advertises its Infringing Bluetooth Classic Products' compliance with the Bluetooth Core Specification regarding such features and capabilities.

94. Defendant induces its customers to infringe and contributes to such infringement by instructing or specifying that its customers engage Bluetooth functionality such that the Infringing Products operate in an infringing manner. Defendant specifies that the Infringing Products operate in an infringing manner by providing source code or firmware on the integrated circuit that causes the Infringing Products to operate in an infringing manner, and/or provides SDKs and driver software that causes Infringing Products to operate in an infringing manner.

95. Defendant directs and controls its customers to use Bluetooth functionality in an infringing manner by providing instructions to set up, engage, and use infringing Bluetooth functionality in the Infringing Products.

96. Upon information and belief, Defendant's customers follow the instructions provided by Defendant to activate the Bluetooth functionality in the Infringing Products, and therefore Defendant intends for its customers to use the Infringing Bluetooth Classic Products in a manner that infringes the Patents.

97. Defendant advertises Infringing Bluetooth Classic Products on its website.

98. The normal, intended operation of the Infringing Bluetooth Classic Products is to provide certain capabilities and features, including adaptive frequency hopping, in compliance

with Version 2.0 or later of the Bluetooth Core Specification, that infringe the Patents. The Infringing Bluetooth Classic Products therefore have no substantial non-infringing uses.

99. Therefore, Defendant induces its customers to directly infringe or contributes to the direct infringement of its customers.

100. Bandspeed has been and will continue to suffer damages as a result of Defendant's infringing acts.

B. Infringing Bluetooth Low Energy Products

101. Defendant manufactures, provides, sells, offers for sale, and/or distributes infringing products, such as integrated circuits, or a set of integrated circuits for wireless communications devices, that use, practice and/or comply with the Bluetooth low energy protocol as described in Version 4.0 and any later version of the Bluetooth Core Specification ("Infringing Bluetooth LE Products").

102. The Infringing Bluetooth LE Products infringe the Bluetooth LE Patents.

103. The Exemplary Infringing Product is an Infringing Bluetooth LE Product.

104. Through its actions, Defendant has infringed the Bluetooth LE Patents, has actively induced others to infringe, and has contributed to the infringement by others of the Bluetooth LE Patents, throughout the United States.

105. Defendant manufactures, provides, sells, offers for sale, and/or distributes integrated circuits, or sets of integrated circuits, that are compliant with the low energy protocol in Version 4.0 and any later version of the Bluetooth Core Specification.

106. Bluetooth low energy is material to practicing the invention described by the Bluetooth LE Patents.

107. Defendant intentionally manufactures and sells Infringing Products that are designed to provide Bluetooth low energy functionality.

108. Defendant certifies that the Infringing Bluetooth LE Products are compliant with Version 4.0 or later of the Bluetooth Core Specification.

109. Upon information and belief, Defendant takes steps to test these products to ensure compliance with the Bluetooth Core Specification and to qualify an Infringing Bluetooth LE Product for Bluetooth certification. Upon information and belief, in connection with compliance, for qualifying Bluetooth products, Defendant prepares a Core ICS. Upon information and belief, portions of the Core ICS require Defendant to acknowledge whether the product supports certain capabilities, including compliance and features consistent with the Bluetooth low energy protocol.

110. The Exemplary Infringing LE Product is capable of performing adaptive frequency hopping.

111. The Infringing Bluetooth LE Products are capable of performing adaptive frequency hopping.

112. The Exemplary Infringing Product is capable of communicating wirelessly.

113. The Infringing Bluetooth LE Products are capable of communicating wirelessly.

114. The Exemplary Infringing Product is capable of participating in a Bluetooth piconet.

115. The Infringing Bluetooth LE Products are capable of participating in a Bluetooth piconet.

116. The Exemplary Infringing Product is capable of performing as a master in a Bluetooth piconet.

117. The Infringing Bluetooth LE Products are capable of performing as a master in a Bluetooth piconet.

118. The Exemplary Infringing Product is capable of performing as a slave in a Bluetooth piconet.

119. The Infringing Bluetooth LE Products are capable of performing as a slave in a Bluetooth piconet.

120. The Exemplary Infringing Product is compliant with Bluetooth Core Specification Version 4.0 or higher.

121. The Infringing Bluetooth LE Products are compliant with Bluetooth Core Specification Version 4.0 or higher.

122. The Exemplary Infringing Product has been certified as compliant with Bluetooth Core Specification Version 4.0 or higher.

123. The Infringing Bluetooth LE Products are certified as compliant with Bluetooth Core Specification Version 4.0 or higher.

124. The Exemplary Infringing Product is capable of transmitting and receiving packets wirelessly.

125. The Infringing Bluetooth LE Products are capable of transmitting and receiving packets wirelessly.

126. The Exemplary Infringing Product is capable of transmitting or receiving packets wirelessly.

127. The Infringing Bluetooth LE Products are capable of transmitting or receiving packets wirelessly.

128. The Exemplary Infringing Product is capable of operating in the 2.4 GHz ISM band.

129. The Infringing Bluetooth LE Products are capable of operating in the 2.4 GHz ISM band.

130. The Exemplary Infringing Product is capable of using a frequency hopping transceiver.

131. The Infringing Bluetooth LE Products are capable of using a frequency hopping transceiver.

132. The Exemplary Infringing Product is capable of Bluetooth frequency hopping.

133. The Infringing Bluetooth LE Products are capable of Bluetooth frequency hopping.

134. The Exemplary Infringing Product is capable of Bluetooth adaptive frequency hopping.

135. The Infringing Bluetooth LE Products are capable of Bluetooth adaptive frequency hopping.

136. The Exemplary Infringing Product uses a random or pseudo-random ordering of channels in the 2.4 GHz ISM band for data transmission.

137. The Infringing Bluetooth LE Products uses a random or pseudo-random ordering of channels in the 2.4 GHz ISM band for data transmission.

138. The Exemplary Infringing Product uses a random or pseudo-random ordering of 37 channels in the 2.4 GHz ISM band for data transmission.

139. The Infringing Bluetooth LE Products use a random or pseudo-random ordering of 37 channels in the 2.4 GHz ISM band for data transmission.

140. The Exemplary Infringing Product uses a frequency hopping pattern that is capable of being adapted to exclude one or more channels where interference is observed or measured.

141. The Infringing Bluetooth LE Products use a frequency hopping pattern that is capable of being adapted to exclude one or more channels where interference is observed or measured.

142. The Exemplary Infringing Product uses a frequency hopping pattern that is capable of being adapted to exclude channels on which interference is observed or suspected.

143. The Infringing Bluetooth LE Products use a frequency hopping pattern that is capable of being adapted to exclude channels on which interference is observed or suspected.

144. The Exemplary Infringing Product uses a frequency hopping pattern that is capable of being adapted to exclude channels based at least in part on the performance of those channels.

145. The Infringing Bluetooth LE Products use a frequency hopping pattern that is capable of being adapted to exclude channels based at least in part on the performance of those channels.

146. The Exemplary Infringing Product is capable of sending and/or receiving a CONNECT_PDU or functional equivalent as it is defined in the Bluetooth Core Specification version 4.0.

147. The Infringing Bluetooth LE Products are capable of sending and/or receiving a CONNECT_PDU or functional equivalent as it is defined in the Bluetooth Core Specification version 4.0.

148. The Exemplary Infringing Product is capable of sending and/or receiving a CONNECT_PDU or functional equivalent as it is defined in the Bluetooth Core Specification version 4.0 that contains an LLData field or functional equivalent.

149. The Infringing Bluetooth LE Products are capable of sending and/or receiving a CONNECT_PDU or functional equivalent as it is defined in the Bluetooth Core Specification version 4.0 that contains an LLData field or functional equivalent.

150. The Exemplary Infringing Product is capable of sending and/or receiving an LLData field or functional equivalent that contains a ChM field or functional equivalent.

151. The Infringing Bluetooth LE Products are capable of sending and/or receiving an LLData field or functional equivalent that contains a ChM field or functional equivalent.

152. The Exemplary Infringing Product is capable of sending and/or receiving an LLData field or functional equivalent that contains a Hop field or functional equivalent.

153. The Infringing Bluetooth LE Products are capable of sending and/or receiving an LLData field or functional equivalent that contains a Hop field or functional equivalent.

154. The Exemplary Infringing Product is capable of sending and/or receiving a ChM field or functional equivalent that contains a subset of channels to be used for communication.

155. The Infringing Bluetooth LE Products are capable of sending and/or receiving a ChM field or functional equivalent that contains a subset of channels to be used for communication.

156. The Exemplary Infringing Product is capable of classifying channels used or unused for communication at a particular time.

157. The Infringing Bluetooth LE Products are capable of classifying channels used or unused for communication at a particular time.

158. The Exemplary Infringing Product is capable of classifying channels used or unused for communication at a particular time based at least in part on performance measurements.

159. The Infringing Bluetooth LE Products are capable of classifying channels used or unused for communication at a particular time based at least in part on performance measurements.

160. The Exemplary Infringing Product is capable of indexing channels to be used for communication at a particular time.

161. The Infringing Bluetooth LE Products are capable of indexing channels to be used for communication at a particular time.

162. The Exemplary Infringing Product uses a Hop field or functional equivalent that contains an increment value as input to the channel selection algorithm of the frequency hopping implementation.

163. The Infringing Bluetooth LE Products use a Hop field or functional equivalent that contains an increment value as input to the channel selection algorithm of the frequency hopping implementation.

164. The Exemplary Infringing Product uses an LLData field or functional equivalent that contains timing information that includes the sent or transmission time of the packets.

165. The Infringing Bluetooth LE Products use an LLData field or functional equivalent that contains timing information that includes the sent or transmission time of the packets.

166. The packet data transmitted by the Exemplary Infringing Product includes timing information indicative of the number of time slots to wait between packet transmissions.

167. The packet data transmitted by the Infringing Bluetooth LE Products includes timing information indicative of the number of time slots to wait between packet transmissions.

168. The Exemplary Infringing Product is capable of sending and/or receiving an LLData field or functional equivalent that contains an Interval field or functional equivalent.

169. The Infringing Bluetooth LE Products are capable of sending and/or receiving an LLData field or functional equivalent that contains an Interval field or functional equivalent.

170. The Exemplary Infringing Product is capable of sending and/or receiving an LLData field or functional equivalent that contains a Latency field or functional equivalent.

171. The Infringing Bluetooth LE Products are capable of sending and/or receiving an LLData field or functional equivalent that contains a Latency field or functional equivalent.

172. The Exemplary Infringing Product is capable of sending and/or receiving an LLData field or functional equivalent that is usable for establishing a timing reference point and time period that is used to determine the timing of subsequent packet transmissions.

173. The Infringing Bluetooth LE Products are capable of sending and/or receiving an LLData field or functional equivalent that is usable for establishing a timing reference point and time period that is used to determine the timing of subsequent packet transmissions.

174. The Exemplary Infringing Product is capable of measuring time in the number of transmission slots or events.

175. The Infringing Bluetooth LE Products are capable of measuring time in the number of transmission slots or events.

176. The Exemplary Infringing Product is capable of sending and/or receiving an LLData field or functional equivalent that contains one or more fields determinative of a frequency hopping pattern.

177. The Infringing Bluetooth LE Products are capable of sending and/or receiving an LLData field or functional equivalent that contains one or more fields determinative of a frequency hopping pattern.

178. The Exemplary Infringing Product is capable of sending and/or receiving an LLData field or functional equivalent that contains one or more fields usable as inputs to a frequency hopping algorithm.

179. The Infringing Bluetooth LE Products are capable of sending and/or receiving an LLData field or functional equivalent that contains one or more fields usable as inputs to a frequency hopping algorithm.

180. The Exemplary Infringing Product is capable of using a frequency hopping pattern for data transmission that is a specific ordering of data channels by index position in a data structure.

181. The Infringing Bluetooth LE Products are capable of using a frequency hopping pattern for data transmission that is a specific ordering of data channels by index position in a data structure.

182. The Exemplary Infringing Product is capable of using a hopping pattern for data transmission that can be adapted to exclude a portion of the frequencies that are used by interfering devices.

183. The Infringing Bluetooth LE Products are capable of using a hopping pattern for data transmission that can be adapted to exclude a portion of the frequencies that are used by interfering devices.

184. The Exemplary Infringing Product is capable of reducing the number of channels used for data transmission through the channel map indicating only the used channels.

185. The Infringing Bluetooth LE Products are capable of reducing the number of channels used for data transmission through the channel map indicating only the used channels.

186. The Exemplary Infringing Product is capable of adjusting the channel set to exclude one or more channels from use by the frequency hopping implementation.

187. The Infringing Bluetooth LE Products are capable of adjusting the channel set to exclude one or more channels from use by the frequency hopping implementation.

188. The Exemplary Infringing Product is capable of using a data structure for indexing channels to be used for frequency hopping communication.

189. The Infringing Bluetooth LE Products are capable of using a data structure for indexing channels to be used for frequency hopping communication.

190. The Exemplary Infringing Product is capable of using a register for indexing channels to be used for frequency hopping communication.

191. The Infringing Bluetooth LE Products are capable of using a register for indexing channels to be used for frequency hopping communication.

192. The Exemplary Infringing Product is capable of loading channel indices into a register.

193. The Infringing Bluetooth LE Products are capable of loading channel indices into a register.

194. The Exemplary Infringing Product is capable of storing channel indices in a register.

195. The Infringing Bluetooth LE Products are capable of storing channel indices in a register.

196. The Exemplary Infringing Product is capable of updating the subset of channels to be used for communication in a piconet.

197. The Infringing Bluetooth LE Products are capable of updating the subset of channels to be used for communication in a piconet.

198. The Exemplary Infringing Product is capable of updating a channel map by sending an LL_CHANNEL_MAP_REQ PDU or functional equivalent as it is defined in the Bluetooth Core Specification version 4.0.

199. The Infringing Bluetooth LE Products are capable of updating a channel map by sending an LL_CHANNEL_MAP_REQ PDU or functional equivalent as it is defined in the Bluetooth Core Specification version 4.0.

200. The Exemplary Infringing Product is capable of sending and/or receiving an LL_CHANNEL_MAP_REQ PDU or functional equivalent as it is defined in the Bluetooth Core Specification version 4.0 containing a new channel map with an associated indexing and initial index position.

201. The Infringing Bluetooth LE Products are capable of sending and/or receiving an LL_CHANNEL_MAP_REQ PDU or functional equivalent as it is defined in the Bluetooth Core Specification version 4.0 containing a new channel map with an associated indexing and initial index position.

202. The Exemplary Infringing Product is capable of sending and/or receiving an LL_CHANNEL_MAP_REQ PDU or functional equivalent as it is defined in the Bluetooth Core Specification version 4.0 containing an Instant field or functional equivalent, which indicates when the new channel map shall take effect.

203. The Infringing Bluetooth LE Products are capable of sending and/or receiving an LL_CHANNEL_MAP_REQ PDU or functional equivalent as it is defined in the Bluetooth Core Specification version 4.0 containing an Instant field or functional equivalent, which indicates when the new channel map shall take effect.

204. The Exemplary Infringing Product uses a hop index and channel map to identify a physical channel. If the identified channel is identified as to be used and is the next usable channel according to the channel selection and hopping algorithms, it is used for communication. If the identified channel is not identified as to be used, it is not used and instead the next available used

channel according to the channel selection, hopping, and remapping algorithms and procedures is selected.

205. The Infringing Bluetooth LE Products use a hop index and channel map to identify a physical channel. If the identified channel is identified as to be used and is the next usable channel according to the channel selection and hopping algorithms, it is used for communication. If the identified channel is not identified as to be used, it is not used and instead the next available used channel according to the channel selection, hopping, and remapping algorithms and procedures is selected.

206. Certain of Defendant's customers request, require, and/or engage features and capabilities, including the low energy protocol, that comply with the Bluetooth Core Specification.

207. Defendant markets and advertises its Infringing Bluetooth LE Products' compliance with the Bluetooth Core Specification regarding such features and capabilities.

208. Defendant induces its customers to infringe and contributes to such infringement by instructing or specifying that its customers install the infringing integrated circuits in products such that the Infringing Bluetooth LE Products operate in an infringing manner. Defendant specifies that the Infringing Bluetooth LE Products operate in an infringing manner by providing source code or firmware on the integrated circuit that causes it to operate in an infringing manner.

209. Defendant markets Exemplary Infringing Product and other similar Bluetooth Low Energy devices on its website.

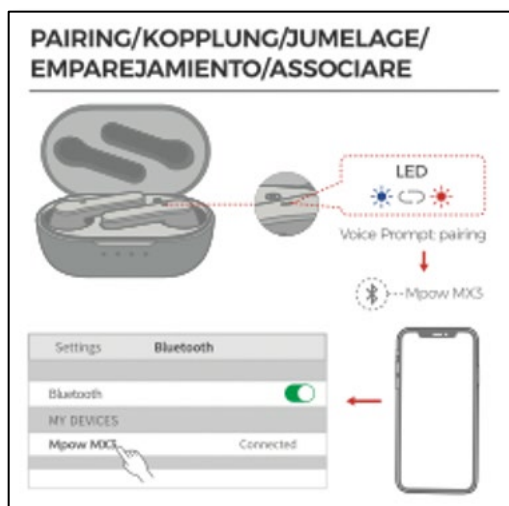
210. Defendant describes Bluetooth features of the Exemplary Infringing Product to customers as follows:

- Mono/Twin Modes, Seamless Connection. Bluetooth 5.0 earbuds bring a faster transmission, stronger anti-interference, and a more stable connection. Whenever you want to share a song or watch a movie together, just pass either one earbud to your friend. You can also wear both earbuds to enjoy the immersive world when you want a moment of inner peace, or remove either one to focus more on the surroundings when you are walking or driving on the road.

2

211. The Exemplary Infringing Product is compliant with the Bluetooth Specification v. 5.0.

212. Defendant provides instructions on how to set up and use the Exemplary Infringing Product in an infringing manner to customers and/or users.³



EN:
 Open the charging case, they will automatically enter the pairing mode in which the LED light flashes blue and red alternately, and then select "Mpow MX3".
 Note: The earbud will reconnect to the paired device by priority. If you want to pair to the second smartphone, please disconnect Bluetooth on the paired smartphone.

² <https://www.xmpow.com/products/mpow-480-wireless-earbuds>.

³ <https://fccid.io/2AMH2-BH480B/User-Manual/User-Manual-5212944.pdf>.

213. The normal, intended operation of the Infringing Bluetooth LE Products is to provide certain capabilities and features that infringe the LE Patents, including Bluetooth Low Energy capabilities and features in compliance with Version 4.0 or later of the Bluetooth Core Specification. The Infringing Bluetooth LE Products have no substantial non-infringing uses.

214. Upon information and belief, Defendant certifies to the Bluetooth SIG that Infringing Bluetooth LE Products are compliant with the Bluetooth Core Specification Version 4.0 or higher.

215. Upon information and belief, certain of Defendant's customers request, require, and/or engage features and capabilities, including the low energy protocol, that comply with the Bluetooth Core Specification, and Defendant markets and advertises its Infringing Bluetooth LE Products' compliance with the Bluetooth Core Specification regarding such features and capabilities.

216. The normal, intended operation of the Infringing Bluetooth LE Products is to provide certain capabilities and features that infringe the LE Patents, including Bluetooth Low Energy capabilities and features in compliance with Version 4.0 or later of the Bluetooth Core Specification. The Infringing Bluetooth Classic Products have no substantial non-infringing uses.

217. Therefore, Defendant induces its customers to directly infringe or contributes to the direct infringement of its customers.

218. Bandspeed has been suffering and will continue to suffer damages as a result of Defendant's infringing acts.

219. Bandspeed has been and will continue to suffer damages as a result of Defendant's infringing acts.

C. The Infringing Products

220. The Infringing Bluetooth Classic Products and the Infringing Bluetooth LE Products are collectively referred to as the “Infringing Products.”

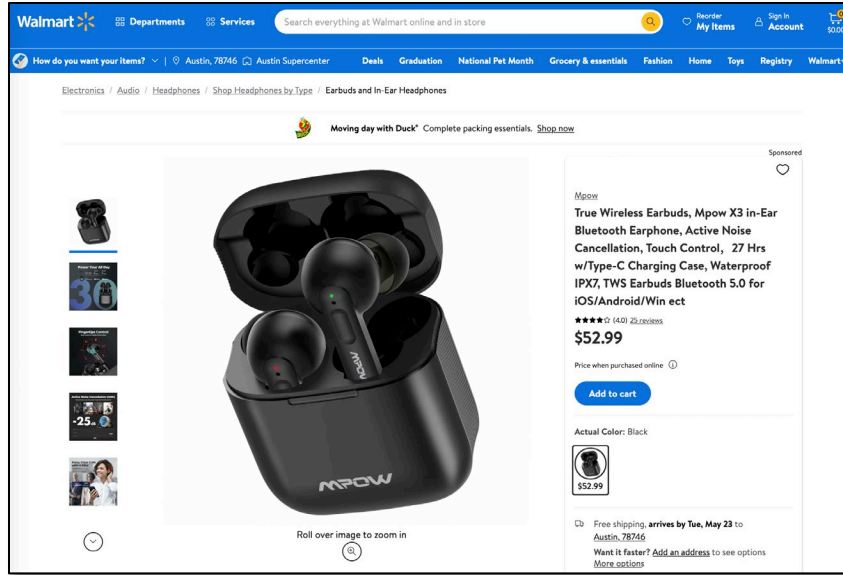
221. Defendant provides downloadable product literature including but not limited to datasheets, user guides & manuals, technical updates, application notes, and developer’s guides for the Infringing Products on its website.

222. Defendant encourages, directs and/or controls customers to use the infringing Bluetooth functionality in the Infringing Products by marketing the Infringing Products.

223. Defendant further encourages, directs and/or controls customers to use the infringing Bluetooth functionality in the Infringing Products by providing instructional materials.

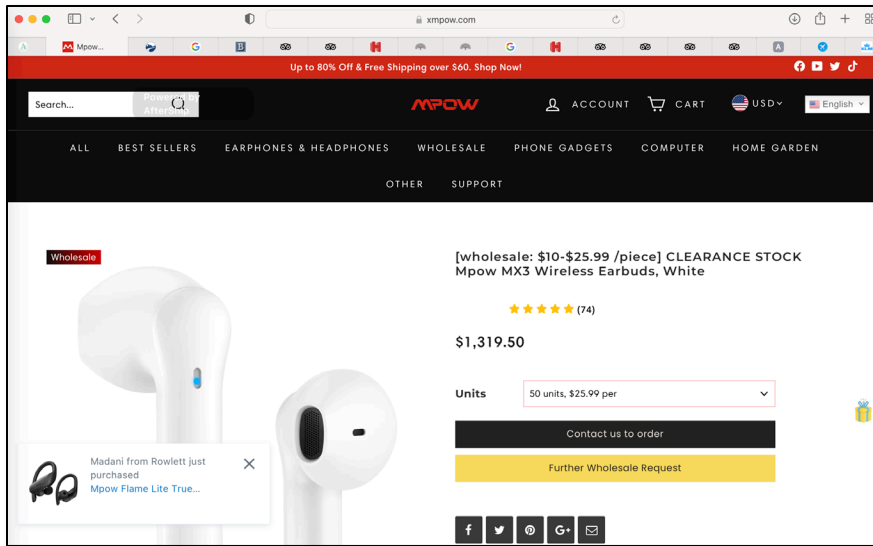
224. Upon information and belief, Defendant sells and has sold the Infringing Products to customers in the United States, including to customers in the State of Texas and to customers within this District.

225. For example, the Exemplary Infringing Product is for sale in the United States, including on the WalMart website.



4

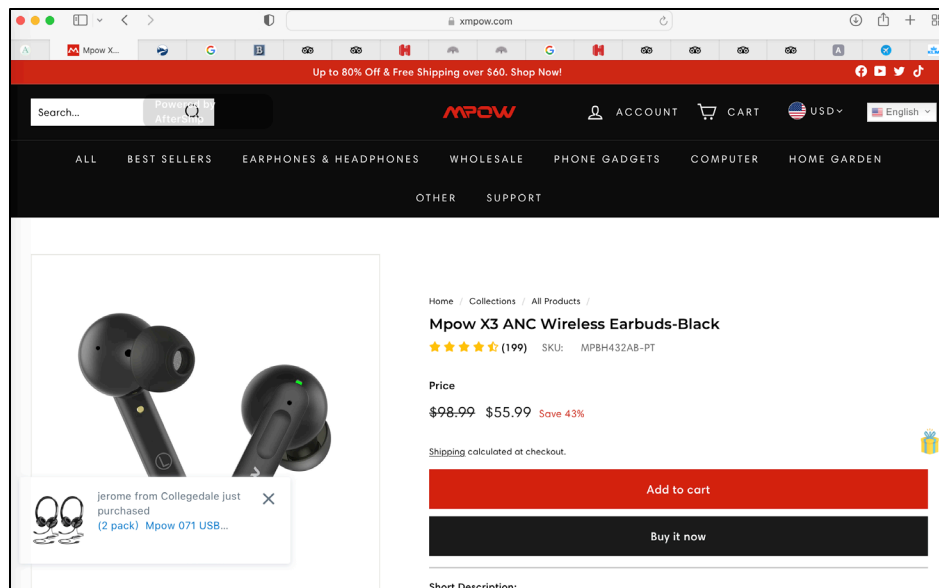
226. The Exemplary Infringing Product is for sale in the United States, including on Defendant’s website.



5

⁴ <https://www.walmart.com/ip/True-Wireless-Earbuds-Mpow-X3-in-Ear-Bluetooth-Earphone-Active-Noise-Cancellation-Touch-Control-27-Hrs-w-Type-C-Charging-Case-Waterproof-IPX7-TWS-Ear/350606508?from=/search> (last visited on May 15, 2023).

⁵ <https://www.xmpow.com/products/mpow-480-wireless-earbuds> (last visited on May 15, 2023).



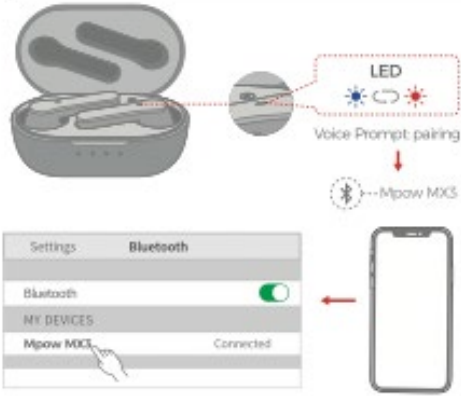
6

227. Defendant induces its customers to infringe and contributes to such infringement by instructing or specifying that its customers engage infringing Bluetooth functionality such that the Infringing Products operate in an infringing manner. Defendant specifies that the Infringing Products operate in an infringing manner by providing instructions, functionality and source code that causes Infringing Products to operate in an infringing manner.

228. Defendant directs and controls its customers to use infringing Bluetooth functionality in an infringing manner by providing instructions to set up, engage, and use infringing Bluetooth functionality in the Infringing Products.

229. For example, upon information and belief, Defendant submitted a user manual for the Exemplary Infringing Product that contains explicit instructions about use of the product.

⁶ <https://www.xmpow.com/collections/all-products/products/mpow-432-true-wireless-earbuds-with-active-noise-cancellation> (last visited on May 15, 2023).

<p>IT:</p> <ol style="list-style-type: none"> 1. Lasciare gli auricolari nella custodia di ricarica e chiudere la custodia di ricarica per spegnerli. 2. Se l'auricolare non si trova nella confezione di ricarica, è sufficiente tenere premuto l'auricolare di ciascun auricolare dell'MFB per 5 secondi per spegnere l'alimentazione. (La modalità 2 non può essere eseguita durante la riproduzione di musica o una chiamata.) <p>PAIRING/KOPPLUNG/JUMELAGE/ EMPAREJAMIENTO/ASSOCIARE</p> 	<p>EN:</p> <p>Open the charging case, they will automatically enter the pairing mode in which the LED light flashes blue and red alternately, and then select "Mpow MX3".</p> <p>Note: The earbud will reconnect to the paired device by priority. If you want to pair to the second smartphone, please disconnect Bluetooth on the paired smartphone.</p> <p>DE:</p> <p>Öffnen Sie die Ladebox, dann wechseln die Kopfhörer automatisch in den Pairing-Modus, in dem die LED-Leuchte abwechselnd blau und rot blinkt, und wählen Sie dann „Mpow MX3“.</p> <p>Achtung: Der Ohrhörer verbindet sich automatisch wieder mit dem letzten gekoppelten Gerät. Wenn Sie mit dem zweiten Smartphone koppeln möchten, deaktivieren Sie bitte Bluetooth auf dem gekoppelten Smartphone.</p> <p>FR:</p> <p>Ouvrez le boîtier de charge, ils entreront automatiquement en mode de couplage. Dans ce mode, les voyants LED clignoteront alternativement en rouge et bleu, puis sélectionnez "Mpow MX3".</p> <p>Remarque: L'écouteur se reconnectera à l'appareil couplé par priorité. Si vous souhaitez vous associer au deuxième smartphone, veuillez déconnecter bluetooth sur le smartphone couplé.</p> <p>ES:</p> <p>Abra el estuche de carga, y los auriculares ingresarán automáticamente al modo de emparejamiento, con la luz LED parpadeará en azul y rojo alternativamente. Luego seleccionará "Mpow MX3".</p>
---	--

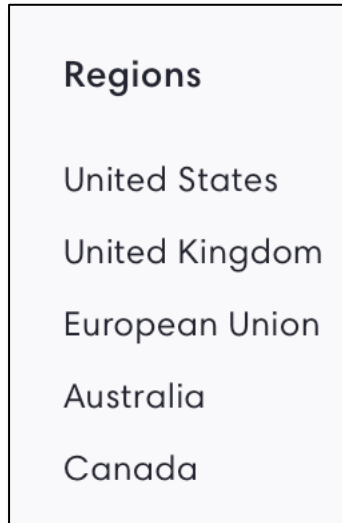
7

230. Upon information and belief, Defendant's customers follow the instructions provided by Defendant to activate the infringing Bluetooth functionality in the Infringing Products, and therefore Defendant intends for its customers to use the Infringing Products in a manner that infringes the Patents.

231. Using established channels and chains of distribution, Defendant provides Infringing Products in a variety of end-products that are made, used, sold, and/or imported into the United States. Defendant knew, should have known, expected, or should have expected that by purposefully placing Infringing Products into the stream of commerce those Infringing Products would be imported into, sold, and used in the United States and the State of Texas.

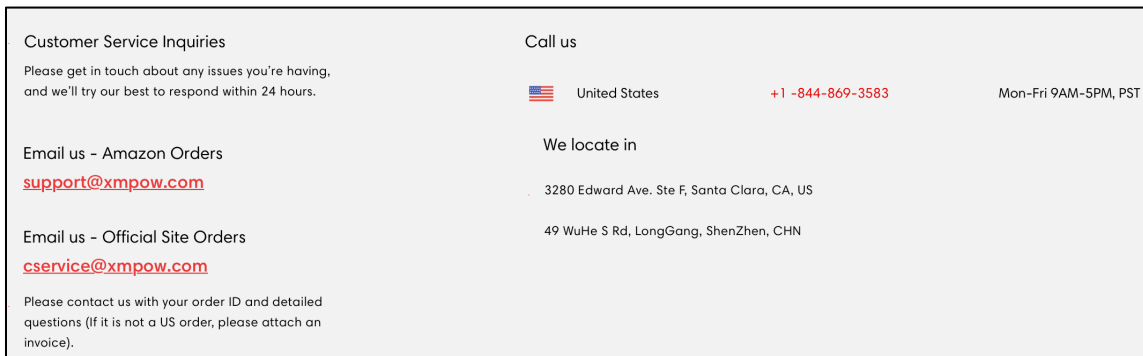
⁷ <https://fccid.io/2AMH2-BH480B/User-Manual/User-Manual-5212944.pdf>.

232. Defendant targets the United States market for sale of the Infringing Products. Defendant’s website specifically identifies the United States as a “Region” to which it sells or markets Infringing Products.



8

233. Defendant provides support, including customer service for Infringing Products, to customers in the United States.



9

234. Upon information and belief, Defendant applies to the United States Federal Communications Commission (FCC) for approvals needed to sell Infringing Bluetooth LE

⁸ https://www.xmpow.com/pages/contact_us.

⁹ *Id.*

Products in the United States, obtaining FCC product IDs for the Infringing Products and submitting documents that (i) identify Defendant as the manufacturer of Infringing Products and (ii) provide instructions for installing and using the Infringing Products in an infringing manner. Defendant sought and the FCC provided a Grant of Equipment Authorization for one or more of the Infringing Products, authorizing “operation at approved frequencies and sale within the USA.”¹⁰

235. Upon information and belief, Defendant provides software and software updates for Infringing Products used as components in end-products that are made, used, sold, and/or imported into the United States. Defendant knew, should have known, expected, or should have expected that by providing software and software updates for Infringing Products to its end-product customers that such software would be downloaded and used by customers in the United States, the State of Texas, and within this District to install and use the Infringing Products in an infringing manner.

COUNT ONE

PATENT INFRINGEMENT – U.S. PATENT NO. 7,027,418 (AGAINST INFRINGING BLUETOOTH CLASSIC PRODUCTS)

236. Bandspeed realleges and incorporates preceding paragraphs herein.

A. Direct Infringement (35 U.S.C. § 271(a))

237. Upon information and belief, Defendant has directly infringed, and continues to directly infringe, individually and/or jointly with others, one or more claims of the '418 Patent by, among other things, making, using, offering for sale, selling, and/or importing Infringing Bluetooth Classic Products.

¹⁰ <https://fccid.io/2AMH2-BH480B>.

238. For example, claim 5 of the '418 Patent states:

5. A method for selecting communications channels for a communications system, the method comprising the computer-implemented steps of:

selecting, based upon performance of a plurality of communications channels at a first time and channel selection criteria, a first set of two or more communications channels from the plurality of communications channels, wherein the channel selection criteria specifies that for a particular communications channel to be selected, the particular communications channel (a) receives a specified number of affirmative votes to use the particular communications channel from a plurality of participants and (b) does not receive a negative vote from a particular participant to not use the particular communications channel;

selecting, based upon performance of the plurality of communications channels at a second time that is later than the first time and the channel selection criteria, a second set of two or more communications channels from the plurality of communications channels;

wherein the communications system is a frequency hopping communications system and the plurality of communications channels correspond to a set of frequencies to be used based on a hopping sequence according to a frequency hopping protocol; and

wherein at each hop in the hopping sequence, only one communications channel is used for communications between a pair of participants;

generating first channel identification data that identifies the first set of two or more communications channels;

transmitting the first channel identification data to one or more participants in the communications system over one communications channel of the plurality of communications channels based on the hopping sequence according to the frequency hopping protocol;

generating second channel identification data that identifies the second set of two or more communications channels; and

transmitting the second channel identification data to one or more participants in the communications system over one communications channel of the plurality of communications channels based on the hopping sequence according to the frequency hopping protocol.

239. Defendant's Infringing Bluetooth Classic Products meet each and every claim limitation of claim 5 of the '418 Patent, as well as other claims of the '418 Patent.

240. Defendant jointly infringes the '418 Patent to the extent that the acts necessary to give rise to liability for direct infringement are shared between Defendant and a third party but can

be legally attributed to Defendant. Defendant conditions participation in an activity or receipt of a benefit upon performance of a step or steps of a patented method and establishes the manner or timing of that performance.

241. Specifically, Defendant provides third-parties, including customers and/or end-users, with Infringing Bluetooth Classic Products. Defendant directs and controls its customers to use Bluetooth functionality in an infringing manner by providing user manuals containing instructions about how to activate, pair, set up and engage infringing Bluetooth functionality in the Infringing Bluetooth Classic Products. When an Infringing Bluetooth Classic Product is engaged to use Bluetooth functionality in the manner designed and established by Defendant, the performance of the infringing functionality occurs. Defendant dictates when and how infringement occurs by virtue of providing software and hardware in the Infringing Bluetooth Classic Products that dictate when and how the performance of the infringing functionality occurs.

B. Indirect Infringement (Inducement - 35 U.S.C. § 271(b))

242. Defendant has indirectly infringed and continues to indirectly infringe, the '418 Patent by inducing direct infringement of the '418 Patent by third parties, including Defendant's customers, including without limitation manufacturers, resellers, and/or end users of the products that contain Infringing Bluetooth Classic Products in this District and elsewhere in the United States.

243. Upon information and belief, despite having knowledge of the '418 Patent, Defendant has specifically intended for persons who acquire and use the Infringing Bluetooth Classic Products, including without limitation end-users of the Infringing Bluetooth Classic Products, to acquire and use such devices in such a way that infringes one or more claims of the '418 Patent.

244. Defendant knew or should have known that its actions were inducing infringement.

245. Defendant has knowledge of the '418 Patent and the infringing nature of its activities when it received the Notice Letter or at least as early as the date when Plaintiff effected service of the original Complaint.

246. Direct infringement is the result of activities performed by third parties, including Defendant's customers, in relation to the Infringing Bluetooth Classic Products, including without limitation by third parties, including Defendant's customers, enabled and encouraged by Defendant to use the Infringing Bluetooth Classic Products in their normal, customary way to infringe the '418 Patent.

247. With knowledge of the '418 Patent, Defendant directs and aids third parties to infringe the '418 Patent by, among other things, (i) enabling a user of the Infringing Bluetooth Classic Products to use adaptive frequency hopping and associated functionality in Version 1.2 and any later version of the Bluetooth Core Specification; (ii) providing instructions (including, by way of example, the tutorials, user guides, product guides, help library, and other documentation) to third parties for using the Infringing Bluetooth Classic Products in their customary way; (iii) advertising the Infringing Bluetooth Classic Products' support and compliance with the Bluetooth Core Specification; and (iv) providing to third parties the products and software and related equipment that may be required for or associated with infringement of the '418 Patent, all with knowledge that the induced acts constitute patent infringement.

248. Defendant possesses specific intent to encourage infringement by third parties, including Defendant's customers and end users of the Infringing Bluetooth Classic Products.

C. Indirect Infringement (Contribution - 35 U.S.C. §§ 271(c) and/or 271(f))

249. Defendant has indirectly infringed and continues to indirectly infringe one or more claims of the '418 patent by contributing to the infringement of the '418 patent under 35 U.S.C. §

271(c) and/or 271(f), either literally and/or under the doctrine of equivalents, by selling, offering for sale, and/or importing into the United States, the Infringing Bluetooth Classic Products.

250. Defendant has knowledge of the '418 Patent by virtue of the Notice Letter and the Complaint.

251. Defendant sells, or offers to sell, a component of a patented combination or material, and more specifically, components used for or in systems that use the adaptive frequency hopping communication functionality as described in Version 1.2 and later versions of the Bluetooth Core Specification, and other infringing Bluetooth functionality. The infringing Bluetooth functionality in the Infringing Bluetooth Classic Products constitutes a material part of the inventions claimed in the '418 Patent. The combination of hardware and software used to provide Bluetooth functionality in the Infringing Bluetooth Classic Products is especially made or adapted to infringe the '418 Patent. Moreover, the Bluetooth combination of hardware and software used in the Infringing Bluetooth Classic Products are specially designed such that the infringing Bluetooth functionality has no non-infringing use, and therefore are not staple articles or commodities of commerce suitable for non-infringing use.

252. Bandspeed is informed and believes that Defendant intends to and will continue to directly and indirectly infringe the '418 Patent. Bandspeed has been damaged as a result of Defendant's infringing conduct described in this Count. Defendant is, thus, liable to Bandspeed in an amount that adequately compensates Bandspeed for its infringement.

COUNT TWO

PATENT INFRINGEMENT – U.S. PATENT NO. 7,477,624 (AGAINST INFRINGING BLUETOOTH CLASSIC PRODUCTS)

253. Bandspeed realleges and incorporates the preceding paragraphs herein.

A. Direct Infringement (35 U.S.C. § 271(a))

254. Upon information and belief, Defendant has directly infringed, and continues to directly infringe, individually and/or jointly with others, one or more claims of the '624 Patent by, among other things, making, using, offering for sale, selling, and/or importing Infringing Bluetooth Classic Products.

255. For example, claim 15 of the '624 Patent states:

13. A communications device for use in a network of devices, comprising:

a memory for storing instructions;

a processor that is communicatively coupled to the memory, wherein the memory includes instructions which, when processed by the processor, causes:

selecting, based upon performance of a plurality of communications channels at a first time, a first set of two or more communications channels from the plurality of communications channels;

selecting, based upon performance of the plurality of communications channels at a second time that is later than the first time, a second set of two or more communications channels from the plurality of communications channels; and

a transceiver that is communicatively coupled to the memory and that is configured to transmit to and receive from another communications device, wherein:

for a first period of time, the first set of two or more communications channels is used to transmit to and receive from the other communications device; and

for a second period of time that is after the first period of time, the second set of two or more communications channels is used to transmit to and receive from the other communications device instead of the first set of two or more communications channels, and

wherein the memory further includes instructions, which when processed by the processor, causes:

after selecting the first set of two or more communications channels, causing the first set of two or more communications channels to be loaded into a first register of the communications device and a second register of the other communications device; and

after selecting the second set of two or more communications channels, causing the second set of two or more communications channels to be loaded into the first register of the communications device and the second register of the other communications device.

15. A communications device as recited in claim 13, wherein:

the instructions for selecting the first set of two or more communications channels further includes instructions which, when processed by the processor, cause selecting, based upon the performance of the plurality of communications channels at the first time and channel selection criteria, the first set of two or more communications channels from the plurality of communications channels;

the instructions for selecting the second set of two or more communications channels further includes instructions which, when processed by the processor, cause selecting, based upon the performance of the plurality of communications channels at the second time and the channel selection criteria, the second set of two or more communications channels from the plurality of communications channels; and

the channel selection criteria specifies that for a particular communications channel to be selected, the particular communications channel receives a specified number of votes to use the particular communications channel from among a plurality of votes.

256. Defendant's Infringing Bluetooth Classic Products meet each and every claim limitation of claim 15 of the '624 Patent, as well as other claims of the '624 Patent.

257. Defendant jointly infringes the '624 Patent to the extent that the acts necessary to give rise to liability for direct infringement are shared between Defendant and a third party but can be legally attributed to Defendant. Defendant conditions participation in an activity or receipt of a benefit upon performance of a step or steps of a patented method and establishes the manner or timing of that performance.

258. Specifically, Defendant provides third parties, including customers and/or end-users, with Infringing Bluetooth Classic Products. Defendant directs and controls its customers to use Bluetooth functionality in an infringing manner by providing user manuals containing instructions about how to activate, pair, set up and engage infringing Bluetooth functionality in the Infringing Bluetooth Classic Products. When an Infringing Bluetooth Classic Product is engaged to use Bluetooth functionality in the manner designed and established by Defendant, the performance of the infringing functionality occurs. Defendant dictates when and how infringement

occurs by virtue of providing software and hardware in the Infringing Bluetooth Classic Products that dictate when and how the performance of the infringing functionality occurs.

B. Indirect Infringement (Inducement - 35 U.S.C. § 271(b))

259. Defendant has indirectly infringed and continues to indirectly infringe, the '624 Patent by inducing direct infringement of the '624 Patent by third parties, including Defendant's customers, including without limitation manufacturers, resellers, and/or end users of the products that contain Infringing Bluetooth Classic Products in this District and elsewhere in the United States.

260. Upon information and belief, despite having knowledge of the '624 Patent, Defendant has specifically intended for persons who acquire and use the Infringing Bluetooth Classic Products, including without limitation end-users of the Infringing Bluetooth Classic Products, to acquire and use such devices in such a way that infringes one or more claims of the '624 Patent.

261. Defendant knew or should have known that its actions were inducing infringement.

262. Defendant has knowledge of the '624 Patent and the infringing nature of its activities when it received the Notice Letter or at least as early as the date when Plaintiff effected service of the original Complaint.

263. Direct infringement is the result of activities performed by third parties, including Defendant's customers, in relation to the Infringing Bluetooth Classic Products, including without limitation by third parties, including Defendant's customers, enabled and encouraged by Defendant to use the Infringing Bluetooth Classic Products in their normal, customary way to infringe the '624 Patent.

264. With knowledge of the '624 Patent, Defendant directs and aids third parties to infringe the '624 Patent by, among other things, (i) enabling a user of the Infringing Bluetooth

Classic Products to use adaptive frequency hopping and associated functionality communication protocol in Version 1.2 and any later version of the Bluetooth Core Specification; (ii) providing instructions (including, by way of example, the tutorials, user guides, product guides, help library, and other documentation) to third parties for using the Infringing Bluetooth Classic Products in their customary way; (iii) advertising the Infringing Bluetooth Classic Products' support and compliance with the Bluetooth Core Specification; and (iv) providing to third parties the products and software and related equipment that may be required for or associated with infringement of the '624 Patent, all with knowledge that the induced acts constitute patent infringement.

265. Defendant possesses specific intent to encourage infringement by third parties, including Defendant's customers and end users of the Infringing Bluetooth Classic Products.

C. Indirect Infringement (Contribution - 35 U.S.C. §§ 271(c) and/or 271(f))

266. Defendant has indirectly infringed and continues to indirectly infringe one or more claims of the '624 patent by contributing to the infringement of the '624 Patent under 35 U.S.C. § 271(c) and/or 271(f), either literally and/or under the doctrine of equivalents, by selling, offering for sale, and/or importing into the United States, the Infringing Bluetooth Classic Products.

267. Defendant has knowledge of the '624 Patent by virtue of the Notice Letter and the Complaint.

268. Defendant sells, or offers to sell, a component of a patented combination or material, and more specifically, components used for or in systems that use the adaptive frequency hopping communication functionality as described in Version 1.2 and later versions of the Bluetooth Core Specification, and other infringing Bluetooth functionality. The infringing Bluetooth functionality in the Infringing Bluetooth Classic Products constitutes a material part of the inventions claimed in the '624 Patent. The combination of hardware and software used to provide Bluetooth functionality in the Infringing Bluetooth Classic Products is especially made or

adapted to infringe the '624 Patent. Moreover, the Bluetooth combination of hardware and software used in the Infringing Bluetooth Classic Products are specially designed such that the infringing Bluetooth functionality has no non-infringing use, and therefore are not staple articles or commodities of commerce suitable for non-infringing use.

269. Bandspeed is informed and believes that Defendant intends to and will continue to directly and indirectly infringe the '624 Patent. Bandspeed has been damaged as a result of Defendant's infringing conduct described in this Count. Defendant is, thus, liable to Bandspeed in an amount that adequately compensates Bandspeed for its infringement.

COUNT THREE

PATENT INFRINGEMENT – U.S. PATENT NO. 7,570,614 (AGAINST INFRINGING BLUETOOTH CLASSIC PRODUCTS)

270. Bandspeed realleges and incorporates preceding paragraphs herein.

A. Direct Infringement (35 U.S.C. § 271(a))

271. Upon information and belief, Defendant has directly infringed, and continues to directly infringe, individually and/or jointly with others, one or more claims of the '614 Patent by, among other things, making, using, offering for sale, selling, and/or importing Infringing Bluetooth Classic Products.

272. For example, claim 100 of the '614 Patent states:

100. A method performed by a particular participant communications device for selecting communications channels for a communications system, the method comprising the computer-implemented steps of:

selecting, based upon performance of a plurality of communications channels and at least one performance criterion, a first communications channel from the plurality of communications channels;

generating channel identification data that identifies the first communications channel;

providing the channel identification data to a first participant;

receiving a first communication from the first participant over a second communications channel from the plurality of communications channels;

wherein the plurality of communications channels correspond to a set of frequencies and the first communication received from the first participant is based on a hopping sequence among at least two communications channels of the plurality of communications channels, according to a frequency hopping protocol;

wherein the channel identification data specifies that the first communications channel is not to be used by the first participant for the first communication;

sending a second communication to the first participant over a third communications channel;

receiving a third communication from the first participant that includes first performance quality data for the third communications channel, wherein the first performance quality data specifies the performance quality of the third communications channel between the particular participant and the first participant, and is generated by the first participant based on information contained in the second communication; and

updating a set of channel data maintained by the particular participant using the first performance quality data;

wherein the particular participant is a master and the first participant is a slave.

273. Defendant's Infringing Bluetooth Classic Products meet each and every claim limitation of claim 100 of the '614 Patent, as well as other claims of the '614 Patent.

274. Defendant jointly infringes the '614 Patent to the extent that the acts necessary to give rise to liability for direct infringement are shared between Defendant and a third party but can be legally attributed to Defendant. Defendant conditions participation in an activity or receipt of a benefit upon performance of a step or steps of a patented method and establishes the manner or timing of that performance.

275. Specifically, Defendant provides third parties, including customers and/or end-users, with Infringing Bluetooth Classic Products. Defendant directs and controls its customers to use Bluetooth functionality in an infringing manner by providing user manuals containing instructions about how to activate, pair, set up and engage infringing Bluetooth functionality in the

Infringing Bluetooth Classic Products. When an Infringing Bluetooth Classic Product is engaged to use Bluetooth functionality in the manner designed and established by Defendant, the performance of the infringing functionality occurs. Defendant dictates when and how infringement occurs by virtue of providing software and hardware in the Infringing Bluetooth Classic Products that dictate when and how the performance of the infringing functionality occurs.

B. Indirect Infringement (Inducement - 35 U.S.C. § 271(b))

276. Defendant has indirectly infringed and continues to indirectly infringe, the '614 Patent by inducing direct infringement of the '614 Patent by third parties, including Defendant's customers, including without limitation manufacturers, resellers, and/or end users of the products that contain Infringing Bluetooth Classic Products in this District and elsewhere in the United States.

277. Upon information and belief, despite having knowledge of the '614 Patent, Defendant has specifically intended for persons who acquire and use the Infringing Bluetooth Classic Products, including without limitation end-users of the Infringing Bluetooth Classic Products, to acquire and use such devices in such a way that infringes one or more claims of the '614 Patent.

278. Defendant knew or should have known that its actions were inducing infringement.

279. Defendant has knowledge of the '614 Patent and the infringing nature of its activities when it received the Notice Letter or at least as early as the date when Plaintiff effected service of the original Complaint.

280. Direct infringement is the result of activities performed by third parties, including Defendant's customers, in relation to the Infringing Bluetooth Classic Products, including without limitation by third parties, including Defendant's customers, enabled and encouraged by

Defendant to use the Infringing Bluetooth Classic Products in their normal, customary way to infringe the '614 Patent.

281. With knowledge of the '614 Patent, Defendant directs and aids third parties to infringe the '614 Patent by, among other things, (i) enabling a user of the Infringing Bluetooth Classic Products to use adaptive frequency hopping and associated functionality in Version 1.2 and any later version of the Bluetooth Core Specification; (ii) providing instructions (including, by way of example, the tutorials, user guides, product guides, help library, and other documentation) to third parties for using the Infringing Bluetooth Classic Products in their customary way; (iii) advertising the Infringing Bluetooth Classic Products' support and compliance with the Bluetooth Core Specification; and (iv) providing to third parties the products and software and related equipment that may be required for or associated with infringement of the '614 Patent, all with knowledge that the induced acts constitute patent infringement.

282. Defendant possesses specific intent to encourage infringement by third parties, including Defendant's customers and end users of the Infringing Bluetooth Classic Products.

C. Indirect Infringement (Contribution - 35 U.S.C. §§ 271(c) and/or 271(f))

283. Defendant has indirectly infringed and continues to indirectly infringe one or more claims of the '614 patent by contributing to the infringement of the '614 patent under 35 U.S.C. § 271(c) and/or 271(f), either literally and/or under the doctrine of equivalents, by selling, offering for sale, and/or importing into the United States, the Infringing Bluetooth Classic Products.

284. Defendant has knowledge of the '614 Patent by virtue of the Notice Letter and the Complaint.

285. Defendant sells, or offers to sell, a component of a patented combination or material, and more specifically, components used for or in systems that use the adaptive frequency hopping communication functionality as described in Version 1.2 and later versions of the

Bluetooth Core Specification, and other infringing Bluetooth functionality. The infringing Bluetooth functionality in the Infringing Bluetooth Classic Products constitutes a material part of the inventions claimed in the '614 Patent. The combination of hardware and software used to provide Bluetooth functionality in the Infringing Bluetooth Classic Products is especially made or adapted to infringe the '614 Patent. Moreover, the Bluetooth combination of hardware and software used in the Infringing Bluetooth Classic Products are specially designed such that the infringing Bluetooth functionality has no non-infringing use, and therefore are not staple articles or commodities of commerce suitable for non-infringing use.

286. Bandspeed is informed and believes that Defendant intends to and will continue to directly and indirectly infringe the '614 Patent. Bandspeed has been damaged as a result of Defendant's infringing conduct described in this Count. Defendant is, thus, liable to Bandspeed in an amount that adequately compensates Bandspeed for its infringement.

COUNT FOUR

PATENT INFRINGEMENT – U.S. PATENT NO. 7,903,608 (AGAINST INFRINGING BLUETOOTH CLASSIC PRODUCTS AND INFRINGING BLUETOOTH LE PRODUCTS)

287. Bandspeed realleges and incorporates preceding paragraphs herein.

A. Direct Infringement (35 U.S.C. § 271(a))

288. Upon information and belief, Defendant has directly infringed, and continues to directly infringe, individually and/or jointly with others, one or more claims of the '608 Patent by, among other things, making, using, offering for sale, selling, and/or importing Infringing Products.

289. For example, claim 1 of the '608 Patent states:

1. A communications device for use in a network of devices, comprising:

a memory for storing instructions;

a processor that is communicatively coupled to the memory, wherein the memory includes instructions which, when processed by the processor, causes:

selecting, based upon performance of a plurality of communications channels at a first time, a first set of two or more communications channels from the plurality of communications channels;

selecting, based upon performance of the plurality of communications channels at a second time that is later than the first time, a second set of two or more communications channels from the plurality of communications channels; and

a transceiver that is communicatively coupled to the memory and that is configured to transmit to and receive from another communications device, wherein:

for a first period of time, the first set of two or more communications channels is used to transmit to and receive from the other communications device; and

for a second period of time that is after the first period of time, the second set of two or more communications channels is used to transmit to and receive from the other communications device instead of the first set of two or more communications channels, and

wherein the number of distinct channels in the first set of two or more communications channels varies from the number of distinct channels in the second set of two or more communications channels.

290. Defendant's Infringing Products meet each and every claim limitation of claim 1 of the '608 Patent, as well as other claims of the '608 Patent.

291. Defendant jointly infringes the '608 Patent to the extent that the acts necessary to give rise to liability for direct infringement are shared between Defendant and a third party but can be legally attributed to Defendant. Defendant conditions participation in an activity or receipt of a benefit upon performance of a step or steps of a patented method and establishes the manner or timing of that performance.

292. Specifically, Defendant provides third parties, including customers and/or end-users, with Infringing Products. Defendant directs and controls its customers to use Bluetooth functionality in an infringing manner by providing user manuals containing instructions about how to activate, pair, set up and engage infringing Bluetooth functionality in the Infringing Products.

When an Infringing Bluetooth Classic Product or Infringing Bluetooth LE Product is engaged to use Bluetooth functionality in the manner designed and established by Defendant, the performance of the infringing functionality occurs. Defendant dictates when and how infringement occurs by virtue of providing software and hardware in the Infringing Products that dictate when and how the performance of the infringing functionality occurs.

B. Indirect Infringement (Inducement - 35 U.S.C. § 271(b))

293. Defendant has indirectly infringed and continues to indirectly infringe, the '608 Patent by inducing direct infringement of the '608 Patent by third parties, including Defendant's customers, including without limitation manufacturers, resellers, and/or end users of the products that contain Infringing Products in this District and elsewhere in the United States.

294. Upon information and belief, despite having knowledge of the '608 Patent, Defendant has specifically intended for persons who acquire and use the Infringing Products, including without limitation end-users of the Infringing Products, to acquire and use such devices in such a way that infringes one or more claims of the '608 Patent.

295. Defendant knew or should have known that its actions were inducing infringement.

296. Defendant has knowledge of the '608 Patent and the infringing nature of its activities when it received the Notice Letter or at least as early as the date when Plaintiff effected service of the original Complaint.

297. Direct infringement is the result of activities performed by third parties, including Defendant's customers, in relation to the Infringing Products, including without limitation by third parties, including Defendant's customers, enabled and encouraged by Defendant to use the Infringing Products in their normal, customary way to infringe the '608 Patent.

298. With knowledge of the '608 Patent, Defendant directs and aids third parties to infringe the '608 Patent by, among other things, (i) enabling a user of the Infringing Bluetooth

Classic Products to use adaptive frequency hopping and associated functionality in Version 1.2 and any later version of the Bluetooth Core Specification; (ii) providing instructions (including, by way of example, the tutorials, user guides, product guides, help library, and other documentation) to third parties for using the Infringing Bluetooth Classic Products in their customary way; (iii) advertising the Infringing Bluetooth Classic Products' support and compliance with the Bluetooth Core Specification; and (iv) providing to third parties the products and software and related equipment that may be required for or associated with infringement of the '608 Patent, all with knowledge that the induced acts constitute patent infringement.

299. With knowledge of the '608 Patent, Defendant directs and aids third parties to infringe the '608 Patent by, among other things, (i) enabling a user of the Infringing Bluetooth LE Products to use Bluetooth low energy functionality in Version 4.0 and any later version of the Bluetooth Core Specification; (ii) providing instructions (including, by way of example, the tutorials, user guides, product guides, help library, and other documentation) to third parties for using the Infringing Bluetooth LE Products in their customary way; (iii) advertising the Infringing Bluetooth LE Products' support and compliance with the Bluetooth Core Specification; and (iv) providing to third parties the products and software and related equipment that may be required for or associated with infringement of the '608 Patent, all with knowledge that the induced acts constitute patent infringement.

300. Defendant possesses specific intent to encourage infringement by third parties, including Defendant's customers and end users of the Infringing Products.

C. Indirect Infringement (Contribution - 35 U.S.C. §§ 271(c) and/or 271(f))

301. Defendant has indirectly infringed and continues to indirectly infringe one or more claims of the '608 patent by contributing to the infringement of the '608 patent under 35 U.S.C. §

271(c) and/or 271(f), either literally and/or under the doctrine of equivalents, by selling, offering for sale, and/or importing into the United States, the Infringing Products.

302. Defendant has knowledge of the '608 Patent by virtue of the Notice Letter and the Complaint.

303. Defendant sells, or offers to sell, a component of a patented combination or material, and more specifically, components used for or in systems that use the adaptive frequency hopping communication functionality as described in Version 1.2 and later versions of the Bluetooth Core Specification, and other infringing Bluetooth functionality. The infringing Bluetooth functionality in the Infringing Bluetooth Classic Products constitutes a material part of the inventions claimed in the '608 Patent. The combination of hardware and software used to provide Bluetooth functionality in the Infringing Bluetooth Classic Products is especially made or adapted to infringe the '608 Patent. Moreover, the Bluetooth combination of hardware and software used in the Infringing Bluetooth Classic Products are specially designed such that the infringing Bluetooth functionality has no non-infringing use, and therefore are not staple articles or commodities of commerce suitable for non-infringing use.

304. Defendant sells, or offers to sell, a component of a patented combination or material, and more specifically, components used for or in systems that use the low energy protocol in Version 4.0 and later versions of the Bluetooth Core Specification, and other infringing Bluetooth functionality. The infringing Bluetooth low energy functionality in the Infringing Bluetooth LE Products constitutes a material part of the inventions claimed in the '608 Patent. The combination of hardware and software used to provide Bluetooth low energy functionality in the Infringing Bluetooth LE Products is especially made or adapted to infringe the '608 Patent. Moreover, the Bluetooth combination of hardware and software used in the Infringing LE Products

are specially designed such that the infringing Bluetooth functionality has no non-infringing use, and therefore are not staple articles or commodities of commerce suitable for non-infringing use.

305. Bandspeed is informed and believes that Defendant intends to and will continue to directly and indirectly infringe the '608 Patent. Bandspeed has been damaged as a result of Defendant's infringing conduct described in this Count. Defendant is, thus, liable to Bandspeed in an amount that adequately compensates Bandspeed for its infringement.

COUNT FIVE

PATENT INFRINGEMENT – U.S. PATENT NO. 8,542,643 (AGAINST INFRINGING BLUETOOTH CLASSIC PRODUCTS AND INFRINGING BLUETOOTH LE PRODUCTS)

306. Bandspeed realleges and incorporates preceding paragraphs herein.

A. Direct Infringement (35 U.S.C. § 271(a))

307. Upon information and belief, Defendant has directly infringed, and continues to directly infringe, individually and/or jointly with others, one or more claims of the '643 Patent by, among other things, making, using, offering for sale, selling, and/or importing Infringing Products.

308. For example, claim 5 of the '643 Patent states:

1. A method, comprising:

loading a set of default channels into a default channel register;

loading a set of good channels into a good channel register;

if a selection kernel addresses a bad channel stored in a particular location of the default channel register, then replacing, by the selection kernel, the bad channel stored in the particular location of the default channel register with a good channel selected from the set of good channels loaded in the good channel register;

wherein the method is performed using one or more computing devices.

5. The method of claim 1, further comprising: rescanning the default channels, based at least in part on the number of good channels.

309. Defendant's Infringing Products meet each and every claim limitation of claim 5 of the '643 Patent, as well as other claims of the '643 Patent.

310. Defendant jointly infringes the '643 Patent to the extent that the acts necessary to give rise to liability for direct infringement are shared between Defendant and a third party but can be legally attributed to Defendant. Defendant conditions participation in an activity or receipt of a benefit upon performance of a step or steps of a patented method and establishes the manner or timing of that performance.

311. Specifically, Defendant provides third parties, including customers and/or end-users, with Infringing Products. Defendant directs and controls its customers to use Bluetooth functionality in an infringing manner by providing user manuals containing instructions about how to activate, pair, set up and engage infringing Bluetooth functionality in the Infringing Products. When an Infringing Bluetooth Classic Product or Infringing Bluetooth LE Product is engaged to use Bluetooth functionality in the manner designed and established by Defendant, the performance of the infringing functionality occurs. Defendant dictates when and how infringement occurs by virtue of providing software and hardware in the Infringing Products that dictate when and how the performance of the infringing functionality occurs.

B. Indirect Infringement (Inducement - 35 U.S.C. § 271(b))

312. Defendant has indirectly infringed and continues to indirectly infringe, the '643 Patent by inducing direct infringement of the '643 Patent by third parties, including Defendant's customers, including without limitation manufacturers, resellers, and/or end users of the products that contain Infringing Products in this District and elsewhere in the United States.

313. Upon information and belief, despite having knowledge of the '643 Patent, Defendant has specifically intended for persons who acquire and use the Infringing Products,

including without limitation end-users of the Infringing Products, to acquire and use such devices in such a way that infringes one or more claims of the '643 Patent.

314. Defendant knew or should have known that its actions were inducing infringement.

315. Defendant has knowledge of the '643 Patent and the infringing nature of its activities when it received the Notice Letter or at least as early as the date when Plaintiff effected service of the original Complaint.

316. Direct infringement is the result of activities performed by third parties, including Defendant's customers, in relation to the Infringing Products, including without limitation by third parties, including Defendant's customers, enabled and encouraged by Defendant to use the Infringing Products in their normal, customary way to infringe the '643 Patent.

317. With knowledge of the '643 Patent, Defendant directs and aids third parties to infringe the '643 Patent by, among other things, (i) enabling a user of the Infringing Bluetooth Classic Products to use adaptive frequency hopping and associated functionality in Version 1.2 and any later version of the Bluetooth Core Specification; (ii) providing instructions (including, by way of example, the tutorials, user guides, product guides, help library, and other documentation) to third parties for using the Infringing Bluetooth Classic Products in their customary way; (iii) advertising the Infringing Bluetooth Classic Products' support and compliance with the Bluetooth Core Specification; and (iv) providing to third parties the products and software and related equipment that may be required for or associated with infringement of the '643 Patent, all with knowledge that the induced acts constitute patent infringement.

318. With knowledge of the '643 Patent, Defendant directs and aids third parties to infringe the '643 Patent by, among other things, (i) enabling a user of the Infringing Bluetooth LE Products to use Bluetooth low energy functionality in Version 4.0 and any later version of the

Bluetooth Core Specification; (ii) providing instructions (including, by way of example, the tutorials, user guides, product guides, help library, and other documentation) to third parties for using the Infringing Bluetooth LE Products in their customary way; (iii) advertising the Infringing Bluetooth LE Products' support and compliance with the Bluetooth Core Specification; and (iv) providing to third parties the products and software and related equipment that may be required for or associated with infringement of the '643 Patent, all with knowledge that the induced acts constitute patent infringement.

319. Defendant possesses specific intent to encourage infringement by third parties, including Defendant's customers and end users of the Infringing Products.

C. Indirect Infringement (Contribution - 35 U.S.C. §§ 271(c) and/or 271(f))

320. Defendant has indirectly infringed and continues to indirectly infringe one or more claims of the '643 patent by contributing to the infringement of the '643 patent under 35 U.S.C. § 271(c) and/or 271(f), either literally and/or under the doctrine of equivalents, by selling, offering for sale, and/or importing into the United States, the Infringing Products.

321. Defendant has knowledge of the '643 Patent by virtue of the Notice Letter and the Complaint.

322. Defendant sells, or offers to sell, a component of a patented combination or material, and more specifically, components used for or in systems that use the adaptive frequency hopping communication functionality as described in Version 1.2 and later versions of the Bluetooth Core Specification, and other infringing Bluetooth functionality. The infringing Bluetooth functionality in the Infringing Bluetooth Classic Products constitutes a material part of the inventions claimed in the '643 Patent. The combination of hardware and software used to provide Bluetooth functionality in the Infringing Bluetooth Classic Products is especially made or adapted to infringe the '643 Patent. Moreover, the Bluetooth combination of hardware and

software used in the Infringing Bluetooth Classic Products are specially designed such that the infringing Bluetooth functionality has no non-infringing use, and therefore are not staple articles or commodities of commerce suitable for non-infringing use.

323. Defendant sells, or offers to sell, a component of a patented combination or material, and more specifically, components used for or in systems that use the low energy protocol in Version 4.0 and later versions of the Bluetooth Core Specification, and other infringing Bluetooth functionality. The infringing Bluetooth low energy functionality in the Infringing Bluetooth LE Products constitutes a material part of the inventions claimed in the '643 Patent. The combination of hardware and software used to provide Bluetooth low energy functionality in the Infringing Bluetooth LE Products is especially made or adapted to infringe the '643 Patent. Moreover, the Bluetooth combination of hardware and software used in the Infringing LE Products are specially designed such that the infringing Bluetooth functionality has no non-infringing use, and therefore are not staple articles or commodities of commerce suitable for non-infringing use.

324. Bandspeed is informed and believes that Defendant intends to and will continue to directly and indirectly infringe the '643 Patent. Bandspeed has been damaged as a result of Defendant's infringing conduct described in this Count. Defendant is, thus, liable to Bandspeed in an amount that adequately compensates Bandspeed for its infringement.

COUNT SIX

PATENT INFRINGEMENT – U.S. PATENT NO. 8,873,500 (AGAINST INFRINGING BLUETOOTH CLASSIC PRODUCTS AND INFRINGING BLUETOOTH LE PRODUCTS)

325. Bandspeed realleges and incorporates preceding paragraphs herein.

A. Direct Infringement (35 U.S.C. § 271(a))

326. Upon information and belief, Defendant has directly infringed, and continues to directly infringe, individually and/or jointly with others, one or more claims of the '500 Patent by, among other things, making, using, offering for sale, selling, and/or importing Infringing Products.

327. For example, claim 28 of the '500 Patent states:

16. A frequency hopping wireless communication device comprising:
at least one processor;

a memory storing instructions which, when executed by the at least one processor, causes:

communicating with another frequency hopping wireless communication device over a plurality of communication channels according to a default hopping sequence;

testing the plurality of communication channels;

selecting a subset of the plurality of communication channels based on results of the testing;

communicating with the other device over the subset of communication channels according to an adapted hopping sequence;

monitoring the subset of communications channels;

based on results of the monitoring or after a specified period of time, reverting back to communicating with the other device over the plurality of communication channels according to the default hopping sequence.

28. The device of claim 16, wherein monitoring the subset of communications channels is performed while communicating with the other device over the subset of communication channels according to the adapted hopping sequence.

328. Defendant's Infringing Products meet each and every claim limitation of claim 28 of the '500 Patent, as well as other claims of the '500 Patent.

329. Defendant jointly infringes the '500 Patent to the extent that the acts necessary to give rise to liability for direct infringement are shared between Defendant and a third party but can be legally attributed to Defendant. Defendant conditions participation in an activity or receipt of a

benefit upon performance of a step or steps of a patented method and establishes the manner or timing of that performance.

330. Specifically, Defendant provides third parties, including customers and/or end-users, with Infringing Products. Defendant directs and controls its customers to use Bluetooth functionality in an infringing manner by providing user manuals containing instructions about how to activate, pair, set up and engage infringing Bluetooth functionality in the Infringing Products. When an Infringing Bluetooth Classic Product or Infringing Bluetooth LE Product is engaged to use Bluetooth functionality in the manner designed and established by Defendant, the performance of the infringing functionality occurs. Defendant dictates when and how infringement occurs by virtue of providing software and hardware in the Infringing Products that dictate when and how the performance of the infringing functionality occurs.

B. Indirect Infringement (Inducement - 35 U.S.C. § 271(b))

331. Defendant has indirectly infringed and continues to indirectly infringe, the '500 Patent by inducing direct infringement of the '500 Patent by third parties, including Defendant's customers, including without limitation manufacturers, resellers, and/or end users of the products that contain Infringing Products in this District and elsewhere in the United States.

332. Upon information and belief, despite having knowledge of the '500 Patent, Defendant has specifically intended for persons who acquire and use the Infringing Products, including without limitation end-users of the Infringing Products, to acquire and use such devices in such a way that infringes one or more claims of the '500 Patent.

333. Defendant knew or should have known that its actions were inducing infringement.

334. Defendant has knowledge of the '500 Patent and the infringing nature of its activities when it received the Notice Letter or at least as early as the date when Plaintiff effected service of the original Complaint.

335. Direct infringement is the result of activities performed by third parties, including Defendant's customers, in relation to the Infringing Products, including without limitation by third parties, including Defendant's customers, enabled and encouraged by Defendant to use the Infringing Products in their normal, customary way to infringe the '500 Patent.

336. With knowledge of the '500 Patent, Defendant directs and aids third parties to infringe the '500 Patent by, among other things, (i) enabling a user of the Infringing Bluetooth Classic Products to use adaptive frequency hopping and associated functionality in Version 1.2 and any later version of the Bluetooth Core Specification; (ii) providing instructions (including, by way of example, the tutorials, user guides, product guides, help library, and other documentation) to third parties for using the Infringing Bluetooth Classic Products in their customary way; (iii) advertising the Infringing Bluetooth Classic Products' support and compliance with the Bluetooth Core Specification; and (iv) providing to third parties the products and software and related equipment that may be required for or associated with infringement of the '500 Patent, all with knowledge that the induced acts constitute patent infringement.

337. With knowledge of the '500 Patent, Defendant directs and aids third parties to infringe the '500 Patent by, among other things, (i) enabling a user of the Infringing Bluetooth LE Products to use Bluetooth low energy functionality in Version 4.0 and any later version of the Bluetooth Core Specification; (ii) providing instructions (including, by way of example, the tutorials, user guides, product guides, help library, and other documentation) to third parties for using the Infringing Bluetooth LE Products in their customary way; (iii) advertising the Infringing Bluetooth LE Products' support and compliance with the Bluetooth Core Specification; and (iv) providing to third parties the products and software and related equipment that may be required

for or associated with infringement of the '500 Patent, all with knowledge that the induced acts constitute patent infringement.

338. Defendant possesses specific intent to encourage infringement by third parties, including Defendant's customers and end users of the Infringing Products.

C. Indirect Infringement (Contribution - 35 U.S.C. §§ 271(c) and/or 271(f))

339. Defendant has indirectly infringed and continues to indirectly infringe one or more claims of the '500 patent by contributing to the infringement of the '500 patent under 35 U.S.C. § 271(c) and/or 271(f), either literally and/or under the doctrine of equivalents, by selling, offering for sale, and/or importing into the United States, the Infringing Products.

340. Defendant has knowledge of the '500 Patent by virtue of the Notice Letter and the Complaint.

341. Defendant sells, or offers to sell, a component of a patented combination or material, and more specifically, components used for or in systems that use the adaptive frequency hopping communication functionality as described in Version 1.2 and later versions of the Bluetooth Core Specification, and other infringing Bluetooth functionality. The infringing Bluetooth functionality in the Infringing Bluetooth Classic Products constitutes a material part of the inventions claimed in the '500 Patent. The combination of hardware and software used to provide Bluetooth functionality in the Infringing Bluetooth Classic Products is especially made or adapted to infringe the '500 Patent. Moreover, the Bluetooth combination of hardware and software used in the Infringing Bluetooth Classic Products are specially designed such that the infringing Bluetooth functionality has no non-infringing use, and therefore are not staple articles or commodities of commerce suitable for non-infringing use.

342. Defendant sells, or offers to sell, a component of a patented combination or material, and more specifically, components used for or in systems that use the low energy protocol

in Version 4.0 and later versions of the Bluetooth Core Specification, and other infringing Bluetooth functionality. The infringing Bluetooth low energy functionality in the Infringing Bluetooth LE Products constitutes a material part of the inventions claimed in the '500 Patent. The combination of hardware and software used to provide Bluetooth low energy functionality in the Infringing Bluetooth LE Products is especially made or adapted to infringe the '500 Patent. Moreover, the Bluetooth combination of hardware and software used in the Infringing LE Products are specially designed such that the infringing Bluetooth functionality has no non-infringing use, and therefore are not staple articles or commodities of commerce suitable for non-infringing use.

343. Bandspeed is informed and believes that Defendant intends to and will continue to directly and indirectly infringe the '500 Patent. Bandspeed has been damaged as a result of Defendant's infringing conduct described in this Count. Defendant is, thus, liable to Bandspeed in an amount that adequately compensates Bandspeed for its infringement.

COUNT SEVEN

PATENT INFRINGEMENT – U.S. PATENT NO. 9,379,769 (AGAINST INFRINGING BLUETOOTH CLASSIC PRODUCTS AND INFRINGING BLUETOOTH LE PRODUCTS)

344. Bandspeed realleges and incorporates the preceding paragraphs herein.

A. Direct Infringement (35 U.S.C. § 271(a))

345. Upon information and belief, Defendant has directly infringed, and continues to directly infringe, individually and/or jointly with others, one or more claims of the '769 Patent by, among other things, making, using, offering for sale, selling, and/or importing Infringing Products.

346. For example, claim 1 of the '769 Patent states:

1. A wireless communications device for use in a frequency hopping communication system, the wireless communications device comprising:

one or more processors; and

one or more memories storing instructions which, when processed by the one or more processors, cause the wireless communications device to perform:

monitoring a plurality of communication channels, the plurality of communication channels used by the wireless communications device for communicating, according to a frequency hopping sequence, with another wireless communications device in the frequency hopping communication system;

based at least on results of the monitoring, classifying one or more communications channels of the plurality of communication channels as good and classifying one or more communications channels of the plurality of communication channels as bad;

transmitting information to the other wireless communications device identifying at least one of: a) the one or more communication channels classified as good, or b) the one or more communication channels classified as bad;

communicating, according to a frequency hopping sequence, with the other wireless communications device over the one or more communication channels classified as good while avoiding communicating with the other wireless communications device over the one or more communication channels classified as bad.

347. Defendant's Infringing Products meet each and every claim limitation of claim 1 of the '769 Patent, as well as other claims of the '769 Patent.

348. Defendant jointly infringes the '769 Patent to the extent that the acts necessary to give rise to liability for direct infringement are shared between Defendant and a third party but can be legally attributed to Defendant. Defendant conditions participation in an activity or receipt of a benefit upon performance of a step or steps of a patented method and establishes the manner or timing of that performance.

349. Specifically, Defendant provides third parties, including customers and/or end-users, with Infringing Products. Defendant directs and controls its customers to use Bluetooth functionality in an infringing manner by providing user manuals containing instructions about how to activate, pair, set up and engage infringing Bluetooth functionality in the Infringing Products. When an Infringing Bluetooth Classic Product or Infringing Bluetooth LE Product is engaged to use Bluetooth functionality in the manner designed and established by Defendant, the performance

of the infringing functionality occurs. Defendant dictates when and how infringement occurs by virtue of providing software and hardware in the Infringing Products that dictate when and how the performance of the infringing functionality occurs.

B. Indirect Infringement (Inducement - 35 U.S.C. § 271(b))

350. Defendant has indirectly infringed and continues to indirectly infringe, the '769 Patent by inducing direct infringement of the '769 Patent by third parties, including Defendant's customers, including without limitation manufacturers, resellers, and/or end users of the products that contain Infringing Products in this District and elsewhere in the United States.

351. Upon information and belief, despite having knowledge of the '769 Patent, Defendant has specifically intended for persons who acquire and use the Infringing Products, including without limitation end-users of the Infringing Products, to acquire and use such devices in such a way that infringes one or more claims of the '769 Patent.

352. Defendant knew or should have known that its actions were inducing infringement.

353. Defendant has knowledge of the '769 Patent and the infringing nature of its activities when it received the Notice Letter or at least as early as the date when Plaintiff effected service of the original Complaint.

354. Direct infringement is the result of activities performed by third parties, including Defendant's customers, in relation to the Infringing Products, including without limitation by third parties, including Defendant's customers, enabled and encouraged by Defendant to use the Infringing Products in their normal, customary way to infringe the '769 Patent.

355. With knowledge of the '769 Patent, Defendant directs and aids third parties to infringe the '769 Patent by, among other things, (i) enabling a user of the Infringing Bluetooth Classic Products to use adaptive frequency hopping and associated functionality in Version 1.2 and any later version of the Bluetooth Core Specification; (ii) providing instructions (including,

by way of example, the tutorials, user guides, product guides, help library, and other documentation) to third parties for using the Infringing Bluetooth Classic Products in their customary way; (iii) advertising the Infringing Bluetooth Classic Products' support and compliance with the Bluetooth Core Specification; and (iv) providing to third parties the products and software and related equipment that may be required for or associated with infringement of the '769 Patent, all with knowledge that the induced acts constitute patent infringement.

356. With knowledge of the '769 Patent, Defendant directs and aids third parties to infringe the '769 Patent by, among other things, (i) enabling a user of the Infringing Bluetooth LE Products to use Bluetooth low energy functionality in Version 4.0 and any later version of the Bluetooth Core Specification; (ii) providing instructions (including, by way of example, the tutorials, user guides, product guides, help library, and other documentation) to third parties for using the Infringing Bluetooth LE Products in their customary way; (iii) advertising the Infringing Bluetooth LE Products' support and compliance with the Bluetooth Core Specification; and (iv) providing to third parties the products and software and related equipment that may be required for or associated with infringement of the '769 Patent, all with knowledge that the induced acts constitute patent infringement.

357. Defendant possesses specific intent to encourage infringement by third parties, including Defendant's customers and end users of the Infringing Products.

C. Indirect Infringement (Contribution - 35 U.S.C. §§ 271(c) and/or 271(f))

358. Defendant has indirectly infringed and continues to indirectly infringe one or more claims of the '769 patent by contributing to the infringement of the '769 patent under 35 U.S.C. § 271(c) and/or 271(f), either literally and/or under the doctrine of equivalents, by selling, offering for sale, and/or importing into the United States, the Infringing Products.

359. Defendant has knowledge of the '769 Patent by virtue of the Notice Letter and the Complaint.

360. Defendant sells, or offers to sell, a component of a patented combination or material, and more specifically, components used for or in systems that use the adaptive frequency hopping communication functionality as described in Version 1.2 and later versions of the Bluetooth Core Specification, and other infringing Bluetooth functionality. The infringing Bluetooth functionality in the Infringing Bluetooth Classic Products constitutes a material part of the inventions claimed in the '769 Patent. The combination of hardware and software used to provide Bluetooth functionality in the Infringing Bluetooth Classic Products is especially made or adapted to infringe the '769 Patent. Moreover, the Bluetooth combination of hardware and software used in the Infringing Bluetooth Classic Products are specially designed such that the infringing Bluetooth functionality has no non-infringing use, and therefore are not staple articles or commodities of commerce suitable for non-infringing use.

361. Defendant sells, or offers to sell, a component of a patented combination or material, and more specifically, components used for or in systems that use the low energy protocol in Version 4.0 and later versions of the Bluetooth Core Specification, and other infringing Bluetooth functionality. The infringing Bluetooth low energy functionality in the Infringing Bluetooth LE Products constitutes a material part of the inventions claimed in the '769 Patent. The combination of hardware and software used to provide Bluetooth low energy functionality in the Infringing Bluetooth LE Products is especially made or adapted to infringe the '769 Patent. Moreover, the Bluetooth combination of hardware and software used in the Infringing LE Products are specially designed such that the infringing Bluetooth functionality has no non-infringing use, and therefore are not staple articles or commodities of commerce suitable for non-infringing use.

362. Bandspeed is informed and believes that Defendant intends to and will continue to directly and indirectly infringe the '769 Patent. Bandspeed has been damaged as a result of Defendant's infringing conduct described in this Count. Defendant is, thus, liable to Bandspeed in an amount that adequately compensates Bandspeed for its infringement.

COUNT EIGHT

**PATENT INFRINGEMENT – U.S. PATENT NO. 9,883,520
(AGAINST INFRINGING BLUETOOTH CLASSIC PRODUCTS
AND INFRINGING BLUETOOTH LE PRODUCTS)**

363. Bandspeed realleges and incorporates the preceding paragraphs herein.

A. Direct Infringement (35 U.S.C. § 271(a))

364. Upon information and belief, Defendant has directly infringed, and continues to directly infringe, individually and/or jointly with others, one or more claims of the '520 Patent by, among other things, making, using, offering for sale, selling, and/or importing Infringing Products.

365. For example, claim 1 of the '520 Patent states:

1. A wireless communications device configured to:

send packet data to another wireless communications device in a wireless communications network, the packet data specifying a subset of communications channels used for frequency hopping communications of a set of communications channels in a frequency band, the packet data further comprising timing information indicating when to begin using the subset of communications channels for frequency hopping communications;

identify a communications channel from the set of communications channels;

use the identified communications channel for frequency hopping communications with the other wireless communications device at a time slot at or after the wireless communications device and the other wireless communications device begin using the subset of communications channels for frequency hopping communications, if the identified communications channel is used for frequency hopping communications; and

use a communications channel in the subset of communications channels for frequency hopping communications with the other wireless communications device at the time slot, if the identified communications channel is not used for frequency hopping communications.

366. Defendant's Infringing Products meet each and every claim limitation of claim 1 of the '520 Patent, as well as other claims of the '520 Patent.

367. Defendant jointly infringes the '520 Patent to the extent that the acts necessary to give rise to liability for direct infringement are shared between Defendant and a third party but can be legally attributed to Defendant. Defendant conditions participation in an activity or receipt of a benefit upon performance of a step or steps of a patented method and establishes the manner or timing of that performance.

368. Specifically, Defendant provides third parties, including customers and/or end-users, with Infringing Products. Defendant directs and controls its customers to use Bluetooth functionality in an infringing manner by providing user manuals containing instructions about how to activate, pair, set up and engage infringing Bluetooth functionality in the Infringing Products. When an Infringing Bluetooth Classic Product or Infringing Bluetooth LE Product is engaged to use Bluetooth functionality in the manner designed and established by Defendant, the performance of the infringing functionality occurs. Defendant dictates when and how infringement occurs by virtue of providing software and hardware in the Infringing Products that dictate when and how the performance of the infringing functionality occurs.

B. Indirect Infringement (Inducement - 35 U.S.C. § 271(b))

369. Defendant has indirectly infringed and continues to indirectly infringe, the '520 Patent by inducing direct infringement of the '520 Patent by third parties, including Defendant's customers, including without limitation manufacturers, resellers, and/or end users of the products that contain Infringing Products in this District and elsewhere in the United States.

370. Upon information and belief, despite having knowledge of the '520 Patent, Defendant has specifically intended for persons who acquire and use the Infringing Products,

including without limitation end-users of the Infringing Products, to acquire and use such devices in such a way that infringes one or more claims of the '520 Patent.

371. Defendant knew or should have known that its actions were inducing infringement.

372. Defendant has knowledge of the '520 Patent and the infringing nature of its activities when it received the Notice Letter or at least as early as the date when Plaintiff effected service of the original Complaint.

373. Direct infringement is the result of activities performed by third parties, including Defendant's customers, in relation to the Infringing Products, including without limitation by third parties, including Defendant's customers, enabled and encouraged by Defendant to use the Infringing Products in their normal, customary way to infringe the '520 Patent.

374. With knowledge of the '520 Patent, Defendant directs and aids third parties to infringe the '520 Patent by, among other things, (i) enabling a user of the Infringing Bluetooth Classic Products to use adaptive frequency hopping and associated functionality in Version 1.2 and any later version of the Bluetooth Core Specification; (ii) providing instructions (including, by way of example, the tutorials, user guides, product guides, help library, and other documentation) to third parties for using the Infringing Bluetooth Classic Products in their customary way; (iii) advertising the Infringing Bluetooth Classic Products' support and compliance with the Bluetooth Core Specification; and (iv) providing to third parties the products and software and related equipment that may be required for or associated with infringement of the '520 Patent, all with knowledge that the induced acts constitute patent infringement.

375. With knowledge of the '520 Patent, Defendant directs and aids third parties to infringe the '520 Patent by, among other things, (i) enabling a user of the Infringing Bluetooth LE Products to use Bluetooth low energy functionality in Version 4.0 and any later version of the

Bluetooth Core Specification; (ii) providing instructions (including, by way of example, the tutorials, user guides, product guides, help library, and other documentation) to third parties for using the Infringing Bluetooth LE Products in their customary way; (iii) advertising the Infringing Bluetooth LE Products' support and compliance with the Bluetooth Core Specification; and (iv) providing to third parties the products and software and related equipment that may be required for or associated with infringement of the '520 Patent, all with knowledge that the induced acts constitute patent infringement.

376. Defendant possesses specific intent to encourage infringement by third parties, including Defendant's customers and end users of the Infringing Products.

C. Indirect Infringement (Contribution - 35 U.S.C. §§ 271(c) and/or 271(f))

377. Defendant has indirectly infringed and continues to indirectly infringe one or more claims of the '520 patent by contributing to the infringement of the '520 patent under 35 U.S.C. § 271(c) and/or 271(f), either literally and/or under the doctrine of equivalents, by selling, offering for sale, and/or importing into the United States, the Infringing Products.

378. Defendant has knowledge of the '520 Patent by virtue of the Notice Letter and the Complaint.

379. Defendant sells, or offers to sell, a component of a patented combination or material, and more specifically, components used for or in systems that use the adaptive frequency hopping communication functionality as described in Version 1.2 and later versions of the Bluetooth Core Specification, and other infringing Bluetooth functionality. The infringing Bluetooth functionality in the Infringing Bluetooth Classic Products constitutes a material part of the inventions claimed in the '520 Patent. The combination of hardware and software used to provide Bluetooth functionality in the Infringing Bluetooth Classic Products is especially made or adapted to infringe the '520 Patent. Moreover, the Bluetooth combination of hardware and

software used in the Infringing Bluetooth Classic Products are specially designed such that the infringing Bluetooth functionality has no non-infringing use, and therefore are not staple articles or commodities of commerce suitable for non-infringing use.

380. Defendant sells, or offers to sell, a component of a patented combination or material, and more specifically, components used for or in systems that use the low energy protocol in Version 4.0 and later versions of the Bluetooth Core Specification, and other infringing Bluetooth functionality. The infringing Bluetooth low energy functionality in the Infringing Bluetooth LE Products constitutes a material part of the inventions claimed in the '520 Patent. The combination of hardware and software used to provide Bluetooth low energy functionality in the Infringing Bluetooth LE Products is especially made or adapted to infringe the '520 Patent. Moreover, the Bluetooth combination of hardware and software used in the Infringing LE Products are specially designed such that the infringing Bluetooth functionality has no non-infringing use, and therefore are not staple articles or commodities of commerce suitable for non-infringing use.

381. Bandspeed is informed and believes that Defendant intends to and will continue to directly and indirectly infringe the '520 Patent. Bandspeed has been damaged as a result of Defendant's infringing conduct described in this Count. Defendant is, thus, liable to Bandspeed in an amount that adequately compensates Bandspeed for its infringement.

VII. WILLFULNESS

382. Bandspeed realleges and incorporates the preceding paragraphs herein.

383. Bandspeed sent the Notice Letter to Defendant on May 12, 2020. Defendant received the Notice Letter and responded on July 10, 2020.

384. Accordingly, Defendant knew of, or was willfully blind to, the Patents and the infringing nature of its activities due to the Notice Letter, or at least as early as the date when Plaintiff effected service of the original Complaint.

385. Despite being notified of the Patents, Defendant nonetheless continued to make, use, sell and/or import Infringing Products, to induce others to engage in such conduct, and/or to contribute to others engaging in such conduct despite knowing that its actions constituted infringement of a valid patent.

386. Accordingly, Defendant acted egregiously and/or knowingly or intentionally when it infringed the Patents.

387. Bandspeed seeks enhanced damages pursuant to 35 U.S.C. §284.

VIII. JURY DEMAND

388. Plaintiff Bandspeed hereby demands a jury on all issues so triable.

IX. REQUEST FOR RELIEF

WHEREFORE, Plaintiff Bandspeed respectfully requests that the Court:

- A. Enter judgment that Defendant infringes one or more claims of the Patents literally and/or under the doctrine of equivalents;
- B. Award Plaintiff Bandspeed past and future damages together with prejudgment and post-judgment interest to compensate for the infringement by Defendant of the Patents in accordance with 35 U.S.C. §284, and increase such award by up to three times the amount found or assessed in accordance with 35 U.S.C. §284;
- C. Award plaintiff Bandspeed its costs, disbursements, attorneys' fees, and such further and additional relief as is deemed appropriate by this Court.

Dated: May 19, 2023

Respectfully submitted,

By: /s/ Adam G. Price
Adam G. Price
Texas State Bar No. 24027750
Christopher V. Goodpastor
Texas State Bar No. 00791991
DINOVO PRICE LLP
7000 N. MoPac Expressway
Suite 350
Austin, Texas 78731
Telephone: (512) 539-2626
Facsimile: (512) 539-2627
cgoodpastor@dinovoprice.com
aprice@dinovoprice.com

**ATTORNEYS FOR PLAINTIFF
BANDSPEED, LLC**